

The Northeast Quarter 6-17-40
Greeley County, Kansas



HUTCHESON

Real Estate & Auction Co.

(620) 355-7991

hutchreal.com

The Northeast Quarter 6-17-40

Greeley County, Kansas



Legal Description

Lots One (1) and Two (2) and the South Half of the Northeast Quarter (S/2 NE/4) of Section Six (6), Township Seventeen (17) South, Range Forty (40) West of the Sixth P.M., Greeley County, Kansas.

Description of the Land

This tract consists of 158.90 total acres.

Possession

Buyer will get immediate possession of the land.

Minerals

This tract is selling with the non-producing minerals.

Driving Directions

This tract is located 8 miles North on US Highway 27 to Road I, then 2 miles West to Road 14, then two miles North to a field road (Sign Posted) then a half mile East to the Northwest corner of the property.

Real Estate Taxes

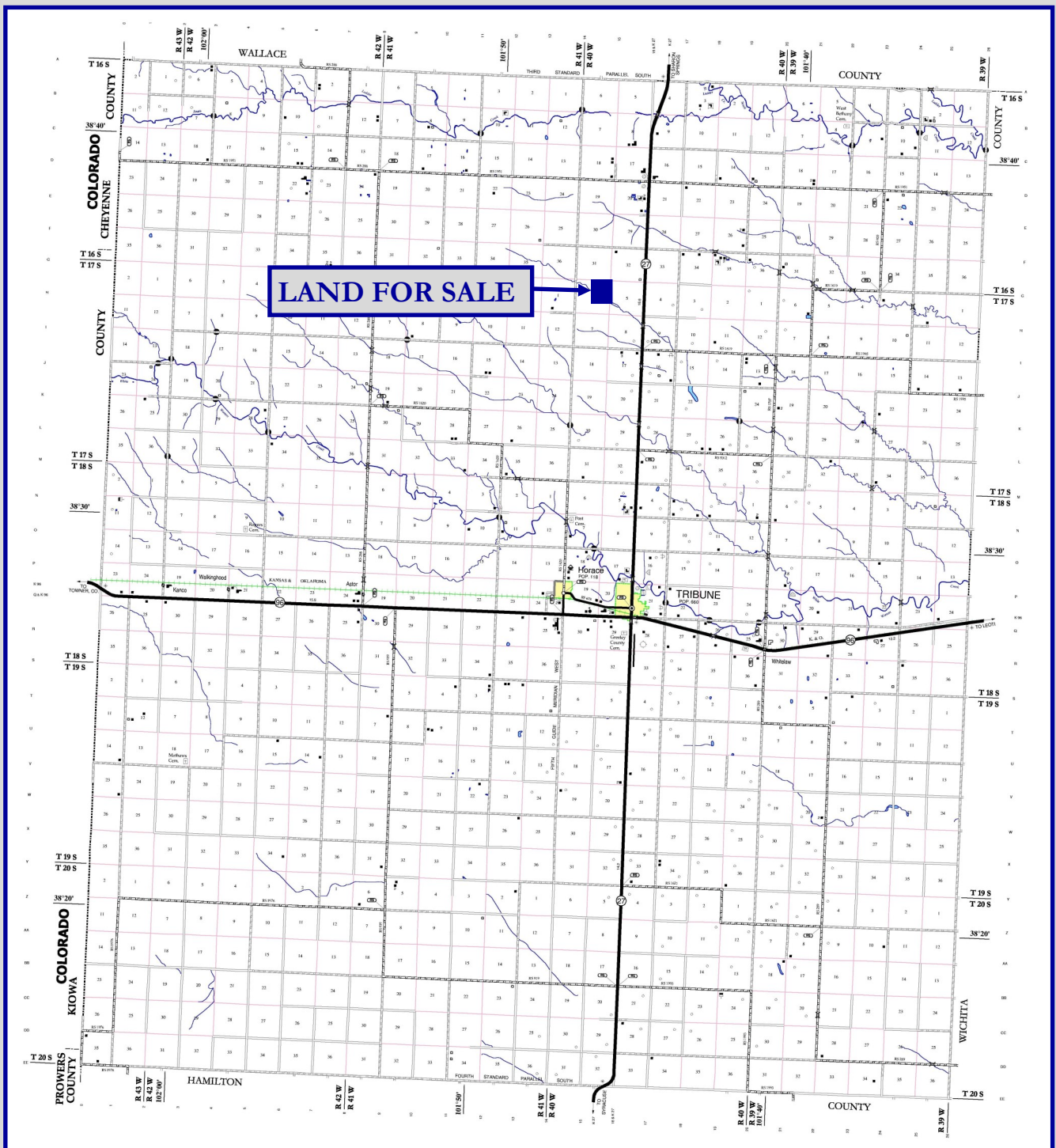
2020 Real Estate Taxes \$1,049.23

Asking Price

\$222,460 or \$1,400 Per Acre

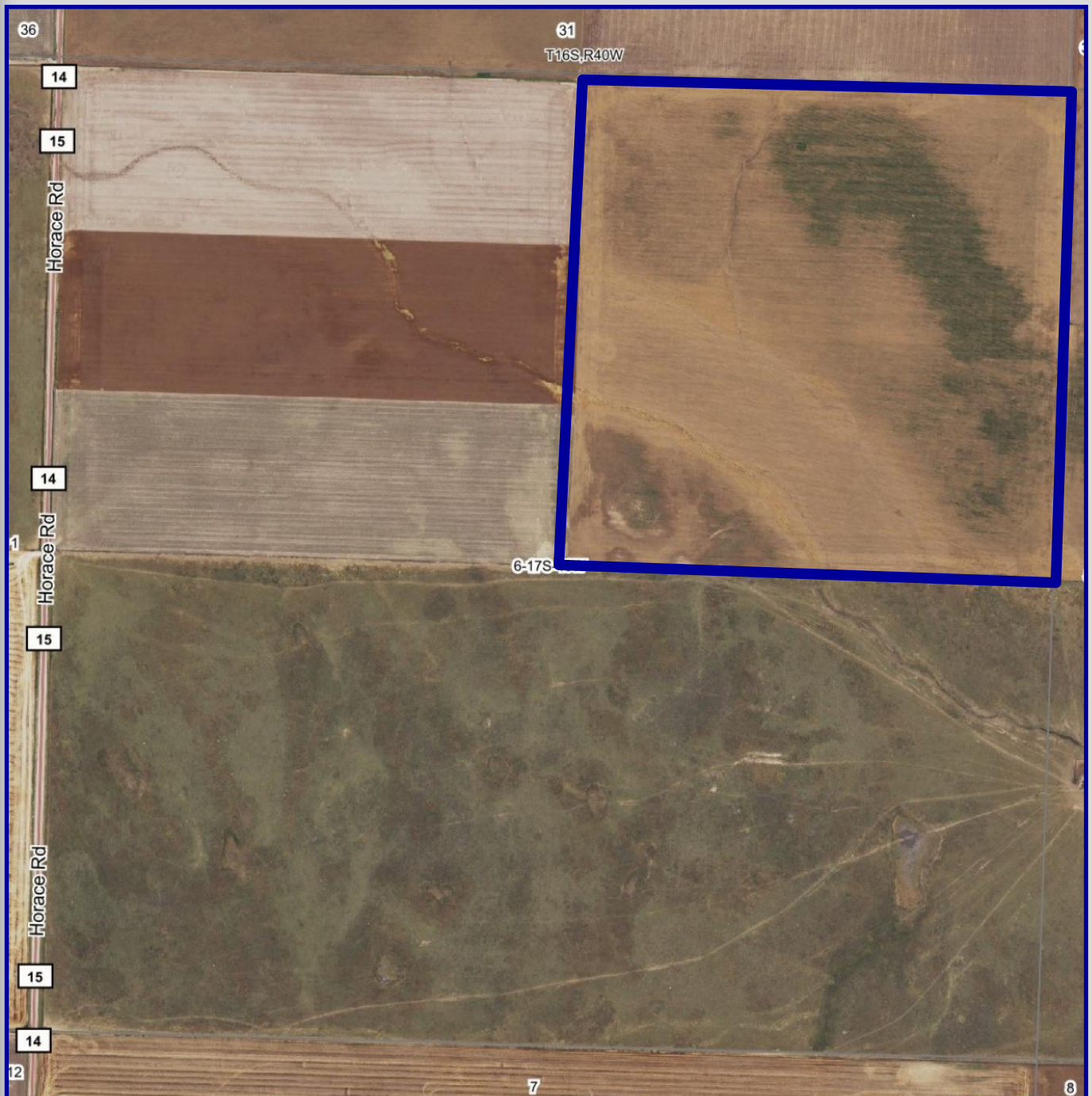
The Northeast Quarter 6-17-40

Greeley County, Kansas



The Northeast Quarter 6-17-40

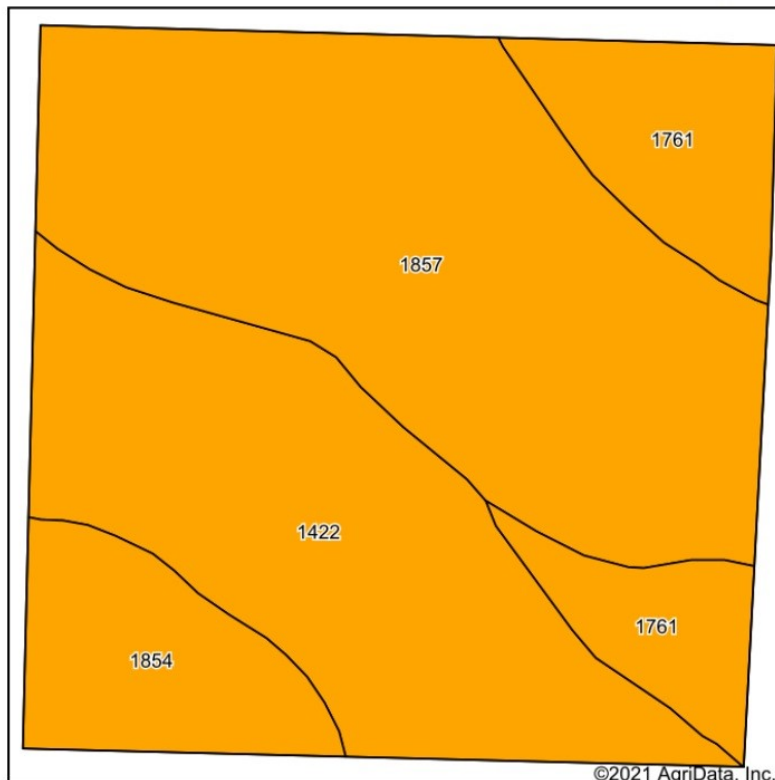
Greeley County, Kansas



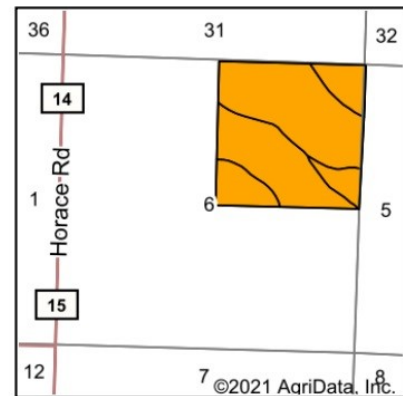
The Northeast Quarter 6-17-40

Greeley County, Kansas

Soils Map



Soils data provided by USDA and NRCS.



State: **Kansas**
County: **Greeley**
Location: **6-17S-40W**
Township: **Tribune**

HUTCHESON
Real Estate & Auction Co.
(620) 355-7991
hutchreal.com



Area Symbol: KS071, Soil Area Version: 17

Code	Soil Description	Acres	Percent of field	Non-Irr Class Legend	Non-Irr Class *c	Irr Class *c	Alfalfa hay Irrigated	Corn Irrigated	Grain sorghum	Grain sorghum Irrigated	Winter wheat	Winter wheat Irrigated	*n NCCPI Soybeans
1857	Ulysses silt loam, 1 to 3 percent slopes	73.76	45.5%		IIle	Ile	5		23	99	20	45	65
1422	Goshen silt loam, rarely flooded	50.25	31.0%		IIlc	Iw	5	118	34	98	34	69	55
1761	Richfield silt loam, 0 to 1 percent slopes	22.36	13.8%		IIlc	I	6	167	33	121	26	47	65
1854	Ulysses loam, 1 to 3 percent slopes	15.77	9.7%		IIle	Ile							62
Weighted Average							4.7	59.6	25.6	92.1	23.2	48.3	*n 61.6