



# First Mid

## AG SERVICES

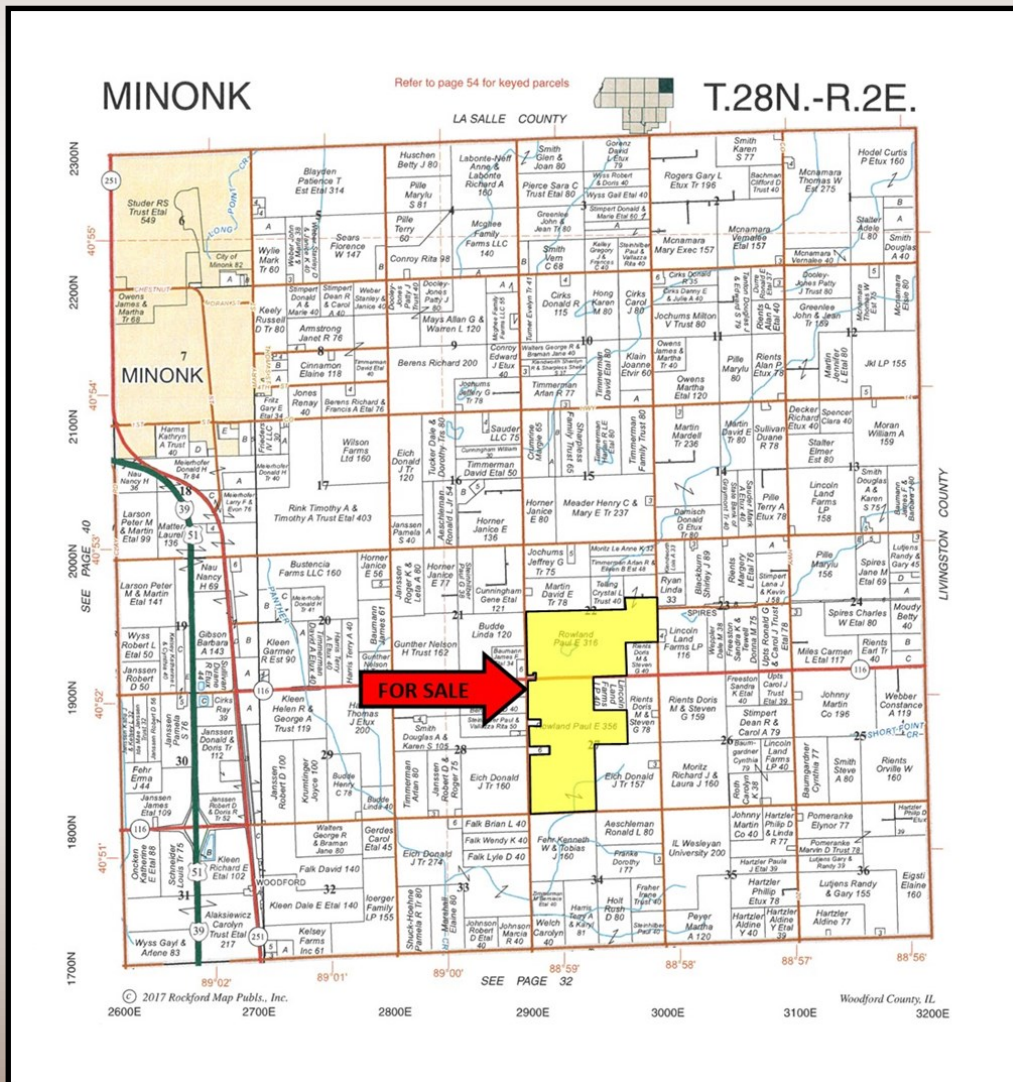
Woodford County  
Farmland  
For Sale!

670 +/- Acres

### The Rowland Farm

This farm is located along State Highway 116, between Minonk and Flanagan, IL.

**Listed @  
\$11,200/acre**



- Large, contiguous property
- Wind Energy Income
- Convenient access  
2 1/2 miles east of I-39

For More Information Contact:

**Daniel S. Patten, Broker**

(309) 530-1575

E-mail: [dpatten@firstmid.com](mailto:dpatten@firstmid.com)

**David Klein, ALC,**

Designated Managing Broker

(800) 532-5263 or

(309) 665-0961

E-mail: [dklein@firstmid.com](mailto:dklein@firstmid.com)

**First Mid Ag Services**

6 Heartland Drive, Suite A

Bloomington, IL 61704

Reprinted with permission from Rockford Map

The information provided is believed to be accurate and representative. However, it is subject to verification and no liability for error or omissions is assumed. The property is being sold in "as is" condition. There are no warranties, expressed or implied, as to the information contained herein and it is recommended that all interested parties make an independent inspection of the property at their own risk, with the assistance of the Listing Broker. First Mid Ag Services, a division of First Mid Wealth Management Co. is the Listing Broker, Daniel S. Patten, Real Estate Broker, is the designated agent and represents the Seller in this transaction. First Mid, the Seller and designated agent expressly disclaim any liability for errors, omissions or changes regarding any information provided. Potential Buyers are urged to rely solely upon their own inspections and opinions in preparing to purchase this property and are expressly advised to not rely on any representations made by the Seller or their agents. Any lines drawn on photos are estimates and not actual. Stock photo may be in use.

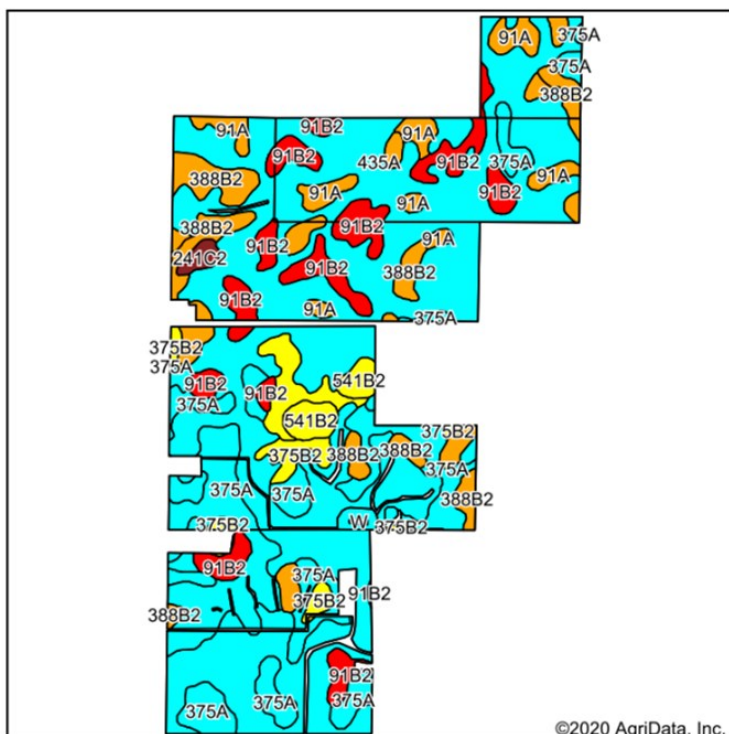


# First Mid

## AG SERVICES

670 +/- Acres  
Woodford County, IL

### Soil Map



Soils data provided by USDA and NRCS.

©2020 AgriData, Inc.

### Primary Soil Types:

- 435A—Streator silty clay loam
- 375A&B2—Rutland silty clay loam
- 91A&B2—Swygert silty clay loam
- 388B2—Wenona silt loam
- 614A—Chenoa silty clay loam
- 541B2—Graymont silty loam

**Weighted Soil PI: 127.8**



### Aerial Photo



Aerial & Soils data provided by AgriData, Inc. Lines drawn are estimates.

### Yields

Year	Corn (bu/acre)	Soybeans (bu/acre)
2014	219	65
2015	207	60
2016	239	72
2017	217	59
2018	216	67
2019	189	57
2020	182	51
<b>Average:</b>	<b>210</b>	<b>62</b>



### General Terms:

Rowland Farm Listing Price: 670 acres @ \$11,200 or \$7,504,000. The Buyer will enter into a contract with 10% down payment with the balance due within 30 days of contract signing. A title policy in the amount of the sale price will be furnished to the Buyer. The Seller will grant possession at closing, subject to the 2021 crop share lease. Seller to retain 2021 crop income & pay 2021 landowner expenses including real estate taxes. January 2021 wind income received to be retained by the Seller and all payments thereafter will go to the Buyer. All mineral rights owned by the Seller will be conveyed to the Buyer. For more information, request a full brochure at [www.firstmidag.com](http://www.firstmidag.com).