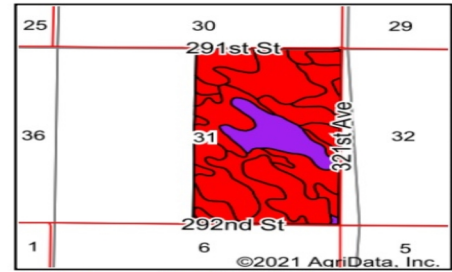
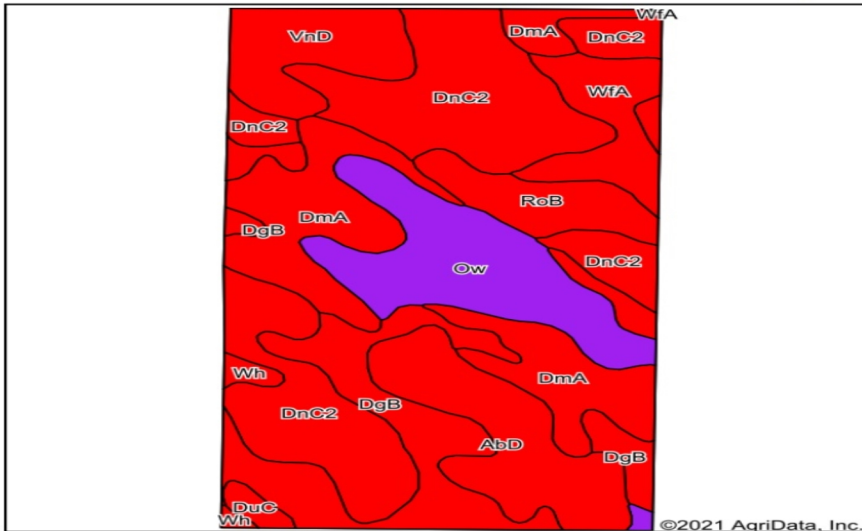


Soils Map



State: **South Dakota**
 County: **Tripp**
 Location: **31-97N-75W**
 Township: **Pleasant View**
 Acres: **320**
 Date: **1/27/2021**



Area Symbol: SD123, Soil Area Version: 21

Code	Soil Description	Acres	Percent of field	PI Legend	Non-Irr Class *c	Irr Class *c	Productivity Index	Alfalfa hay	Alfalfa hay irrigated	Brome grass alfalfa	Cool season grasses	Corn	Corn Irrigated	Grain sorghum irrigated	Grain sorghum	Oats
DnC2	Dunday loamy fine sand, 3 to 9 percent slopes, eroded	88.89	27.8%		Vle	IVe	34		3				90	70		
DmA	Doger-Elsmere complex, 0 to 3 percent slopes	56.37	17.6%		IVe		48	1.5				25				30
DgB	Doger loamy fine sand, 0 to 6 percent slopes	44.28	13.8%		IVe		32	1.5				25				30
Ow	Orwet loam	39.42	12.3%		IVw		56	3				45			50	
AbD	Anselmo fine sandy loam, 9 to 15 percent slopes	32.01	10.0%		Vle		40									
VnD	Valentine-Longpine complex, 6 to 15 percent slopes	21.01	6.6%		Vle		12									

Soils data provided by USDA and NRCS.

AgriData, Inc. 2021

Code	Soil Description	Acres	Percent of field	PI Legend	Non-Irr Class *c	Irr Class *c	Productivity Index	Alfalfa hay	Alfalfa hay irrigated	Brome grass alfalfa	Cool season grasses	Corn	Corn Irrigated	Grain sorghum irrigated	Grain sorghum	Oats
WFA	Wewela loamy fine sand, 0 to 4 percent slopes	16.92	5.3%		IVe	IVe	40	1.7			2.5	28				36
RoB	Ronson-Longpine fine sandy loams, 0 to 6 percent slopes	15.25	4.8%		IIIe	IIIe	38	0.7	4	1.2		13	125			24
DuC	Dunday-Doger loamy fine sands, 3 to 9 percent slopes	2.58	0.8%		Vle	IVe	33		3				90	70		
Wh	Whitelake fine sandy loam	2.54	0.8%		IVe		44	1.4		2.3						33
AbB	Anselmo fine sandy loam, 3 to 6 percent slopes	0.73	0.2%		IIIe	IIIe	54									
Weighted Average							38.6	1	1	0.1	0.1	15.5	31.7	20	6.2	12.7

*c: Using Capabilities Class Dominant Condition Aggregation Method