

PLEASANT VIEW TWP

T 97 N

R 75 W

**320 (+/-) Acres of Pasture,
Pleasant View Twp, Tripp
County, SD**

For Sale: 2000/acre



**320 acres of pasture land with
will on SE quarter run by a
solar panel pump. A barbed-
wire fence encloses the area
with mature trees.**

Taxes: 1750.10

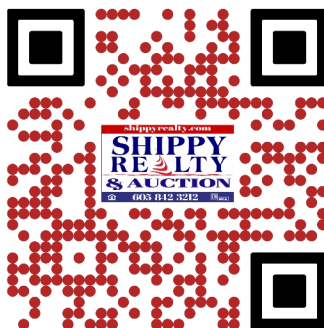
NE1/4 & SE1/4 31-97-75

shippyrealty.com

**SHIPPY
REALTY
& AUCTION**



605-842-3212



SCAN ME



MULTIPLE LISTING SERVICE

MLS

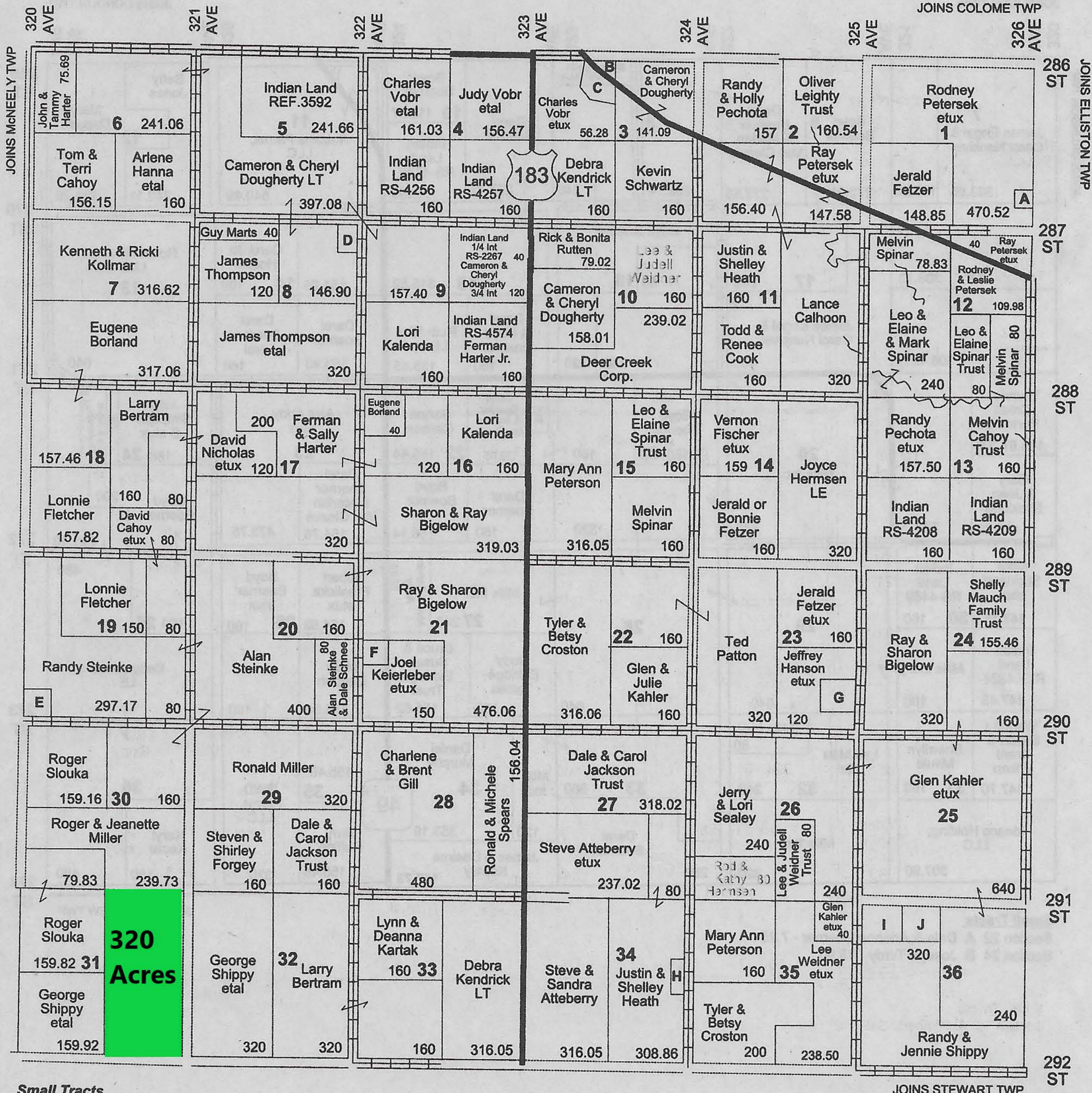


PLEASANT VIEW TWP

T 97 N

R 75 W

JOINS COLOME TWP

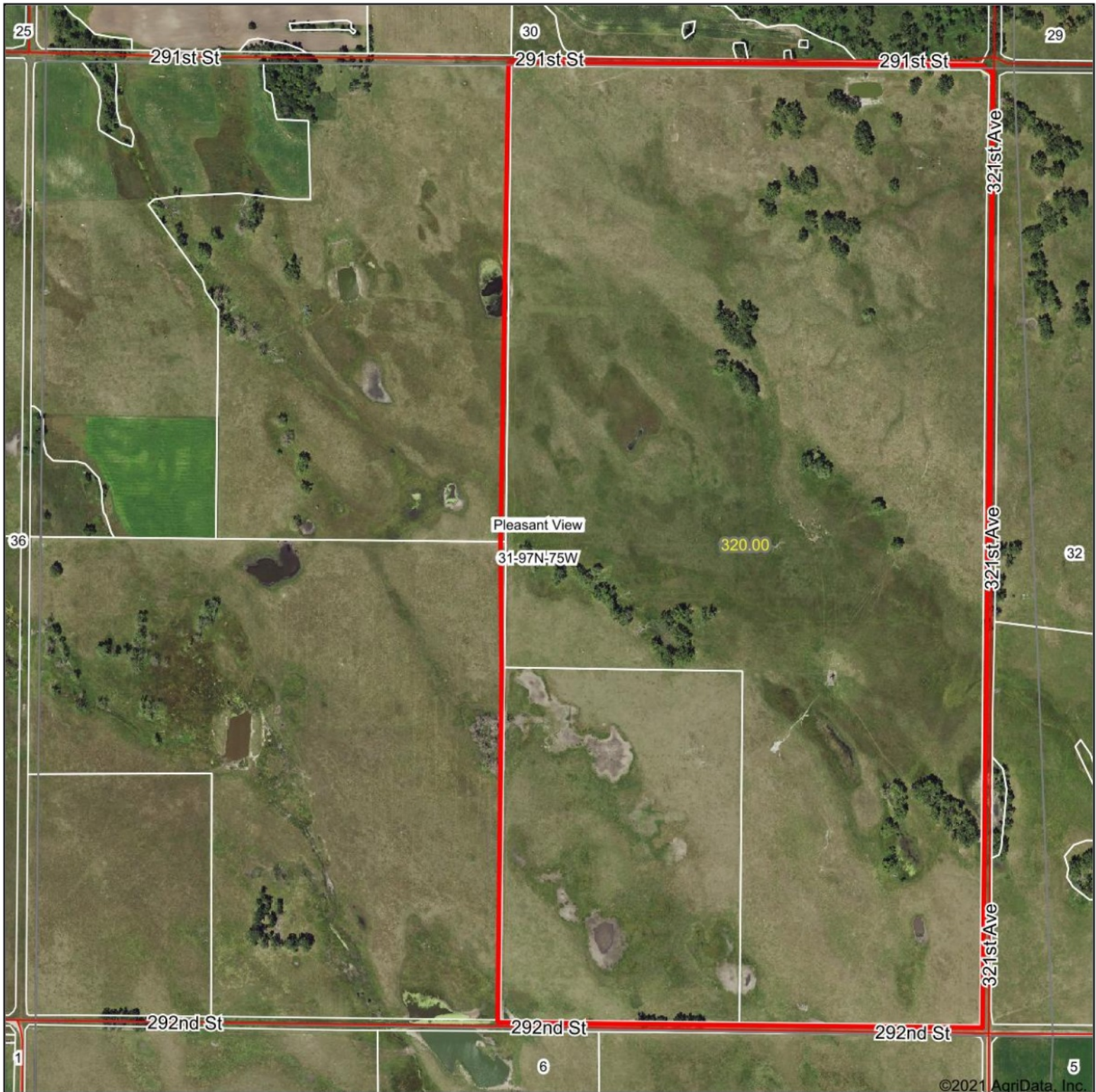


Small Tracts

- Section 1 A RJ & Sara Petersek - 10
- Section 3 B Vincent & Lenna Thieman - 6.53
- C City of Colome - 15
- Section 8 D Ryan & Rebecca DeSmet - 11.94
- Section 19 E Randy Steinke - 19.79
- Section 21 F Kevin & Marti Kingsley - 10
- Section 23 G Cleo & Jerrene Watzel - 40
- Section 34 H Terry & Kathy Bertram - 11.14
- Section 36 I Jerry & Lori Sealey - 40
- J Glenn & Julie Kahler - 40

R 75 W						R 74 W					
T 97 N						T 96 N					
PAHAPESTO	GREENWOOD	STAR VALLEY	LONE STAR	ROSELAND		PROGRESSIVE	WITTEN	BANNER	BRUNSON	PLEASANT VALLEY	BULL CREEK
CURLEW	LONETREE	IDEAL	KING	CONDON		CARTER	JORDAN	BLACK	LAMRO	PLAINVIEW	SULLY
						TAYLOR	ROSEDALE	WEAVER	WILSON	COLOME	IRWIN
						WRIGHT	STAR PRAIRIE	DOGEAR	MCNEELY	PLEASANT VIEW	ELLISTON
						HOLSCLOW	WORTHMAN	WILLOW CREEK	LAKE	STEWART	LINCOLN
						BEAVER CREEK	HUGGINS	MILLBORO	RAMES	KEYA PAHA	VALLEY

Aerial Map



©2021 AgriData, Inc.

www.shippyrealty.com

**SHIPPY
REALTY**

Winner, SD 605842-3212

Maps Provided By



surety
CUSTOMIZED ONLINE MAPPING

© AgriData, Inc. 2021

www.AgriDataInc.com

Map Center: 43° 10' 34.41, -99° 45' 37.46

0ft 850ft 1700ft

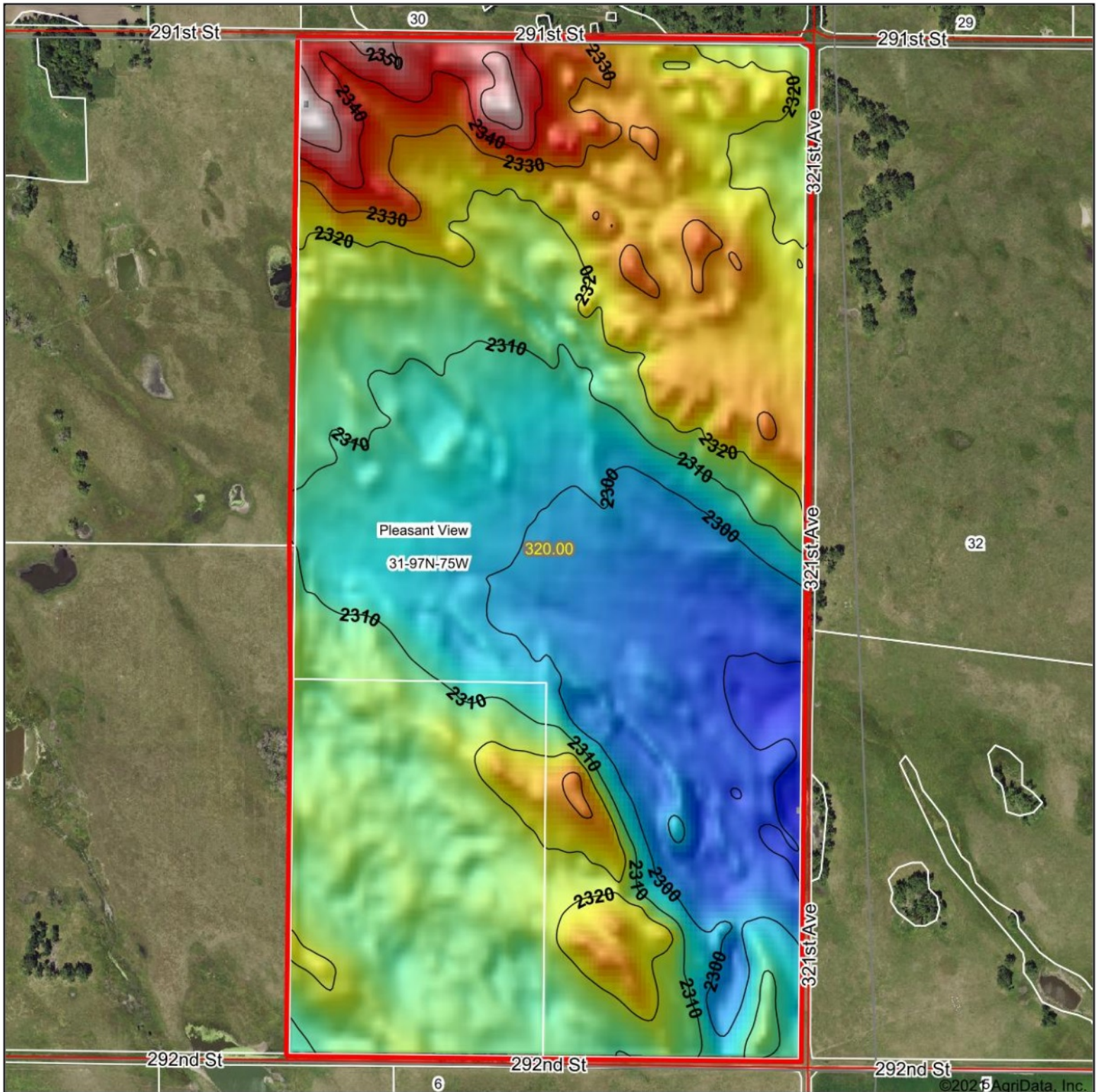
**31-97N-75W
Tripp County
South Dakota**



1/27/2021

Field borders provided by Farm Service Agency as of 5/21/2008.

Topography Hillshade



Low Elevation High

Source: USGS 10 meter dem

0ft 800ft 1601ft

Interval(ft): 10

Min: 2,286.9

Max: 2,357.1

Range: 70.2

Average: 2,313.4

Standard Deviation: 13.29 ft



1/27/2021

31-97N-75W
Tripp County
South Dakota

map center: 43° 10' 34.41, -99° 45' 37.46

www.shippyrealtty.com
SHIPPY
REALTY
Winner, SD #842-3212

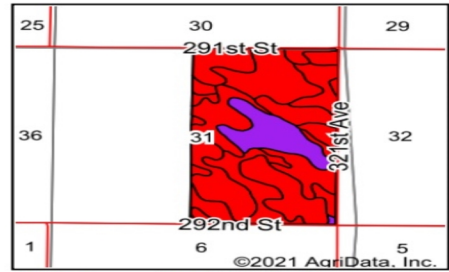
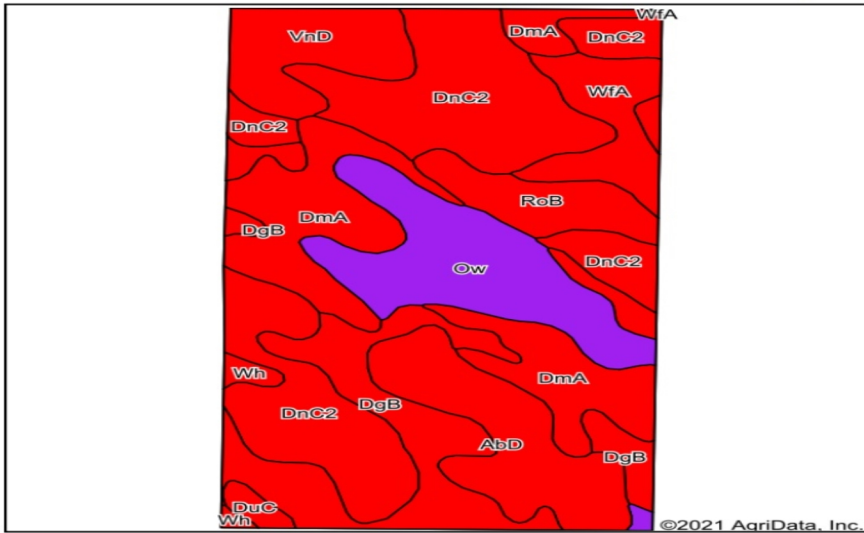
Maps Provided By:

surety
CUSTOMIZED ONLINE MAPPING

© AgriData, Inc. 2021 www.AgriDataInc.com

Field borders provided by Farm Service Agency as of 5/21/2008.

Soils Map



State: **South Dakota**
 County: **Tripp**
 Location: **31-97N-75W**
 Township: **Pleasant View**
 Acres: **320**
 Date: **1/27/2021**



Maps Provided By



Area Symbol: SD123, Soil Area Version: 21

Code	Soil Description	Acres	Percent of field	PI Legend	Non-Irr Class *c	Irr Class *c	Productivity Index	Alfalfa hay	Alfalfa hay Irrigated	Brome grass alfalfa	Cool season grasses	Corn	Corn Irrigated	Grain sorghum Irrigated	Grain sorghum	Oats
DnC2	Dunday loamy fine sand, 3 to 9 percent slopes, eroded	88.89	27.8%		Vle	IVe	34		3				90	70		
DmA	Doger-Elsmere complex, 0 to 3 percent slopes	56.37	17.6%		IVe		48	1.5				25				30
DgB	Doger loamy fine sand, 0 to 6 percent slopes	44.28	13.8%		IVe		32	1.5				25				30
Ow	Orwet loam	39.42	12.3%		IVw		56	3				45			50	
AbD	Anselmo fine sandy loam, 9 to 15 percent slopes	32.01	10.0%		Vle		40									
VnD	Valentine-Longpine complex, 6 to 15 percent slopes	21.01	6.6%		Vle		12									

Soils data provided by USDA and NRCS.

AgriData, Inc. 2021

Code	Soil Description	Acres	Percent of field	PI Legend	Non-Irr Class *c	Irr Class *c	Productivity Index	Alfalfa hay	Alfalfa hay Irrigated	Brome grass alfalfa	Cool season grasses	Corn	Corn Irrigated	Grain sorghum Irrigated	Grain sorghum	Oats
WFA	Wewela loamy fine sand, 0 to 4 percent slopes	16.92	5.3%		IVe	IVe	40	1.7			2.5	28				36
RoB	Ronson-Longpine fine sandy loams, 0 to 6 percent slopes	15.25	4.8%		IIIe	IIIe	38	0.7	4	1.2		13	125			24
DuC	Dunday-Doger loamy fine sands, 3 to 9 percent slopes	2.58	0.8%		Vle	IVe	33		3				90	70		
Wh	Whitelake fine sandy loam	2.54	0.8%		IVe		44	1.4		2.3						33
AbB	Anselmo fine sandy loam, 3 to 6 percent slopes	0.73	0.2%		IIIe	IIIe	54									
Weighted Average							38.6	1	1	0.1	0.1	15.5	31.7	20	6.2	12.7

*c: Using Capabilities Class Dominant Condition Aggregation Method