

169.02 Acres Arrowhead Ranch



Located in far northern Uvalde County right on the Real/Uvalde county line

Less than 10 minutes to the cool, refreshing waters of the Nueces River
for swimming, fishing, canoeing, and kayaking activities

3 miles of good access road off blacktop

Land is 95% flat and useable nestled in between high peaks of the Rawhide Mountain Range

Elevation change of 220ft in the northwest corner with spectacular views

Heavily wooded with large, first growth cedars that the average man can't reach his arms around,
abundant live oaks and other south Texas and hill country vegetation

Minimal rock, abundant topsoil in the valley

Numerous dry creeks and one wet weather creek that sweeps through the northern side of property

In 2019 the creek had a flowing stream for nearly 6 months

2019 30ft travel trailer, 8x40x9ft sea container for storage and parking ATVs, 4wheeler

Water well & electricity in place

Over 4 miles of improved ranch roads giving access to all parts of property

All neighbors are much larger in size Blinds and feeders included

Abundant wildlife includes whitetail, turkey, hog, axis, aoudad

and occasional other free ranging exotics can be seen on ranch

Perfect hilltop home building site with beautiful vista of Rawhide Mountain Range

Wildlife exempt taxes

Whether you're looking for a place to build your retirement home or simply a recreational property
that is just minutes away from the Nueces River this is the place for you!

Give us a call to schedule a showing

\$699,000

Listing #167

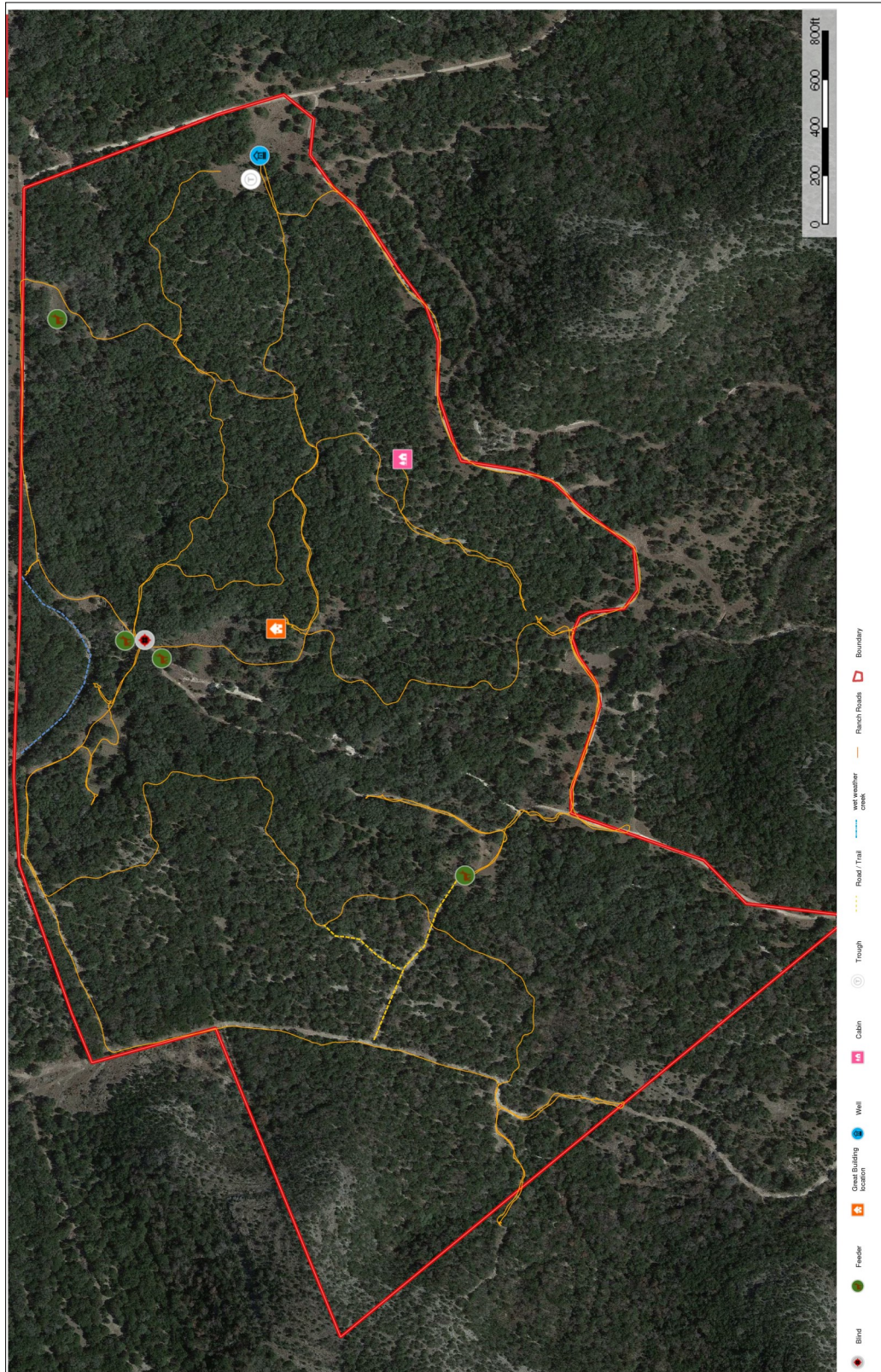
Western Hill Country Realty

www.westernhillcountryrealty.com

info@westernhillcountryrealty.com

830-683-4435

169.02 Acres Arrowhead Ranch



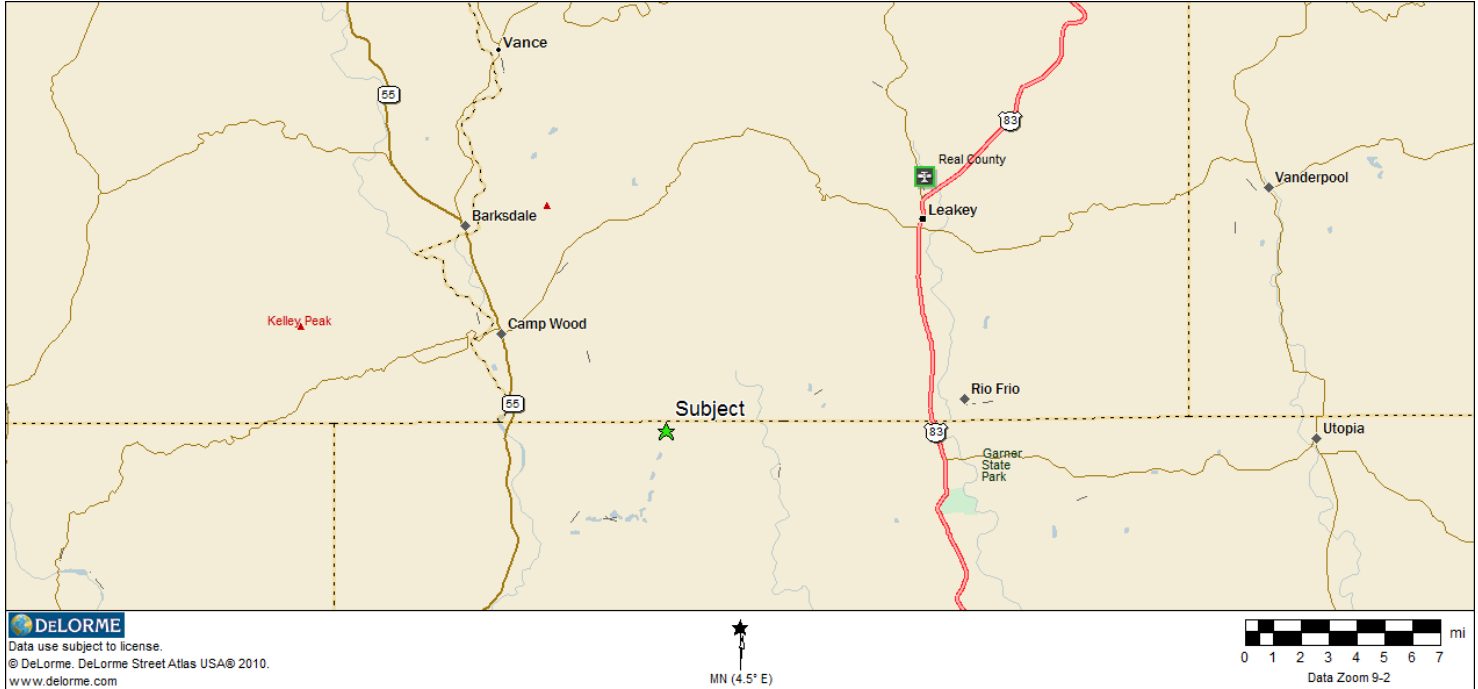
Western Hill Country Realty

www.westernhillcountryrealty.com

info@westernhillcountryrealty.com

830-683-4435

169.02 Acres Arrowhead Ranch



Western Hill Country Realty

www.westernhillcountryrealty.com

info@westernhillcountryrealty.com

830-683-4435

169.02 Acres Arrowhead Ranch



Western Hill Country Realty

www.westernhillcountryrealty.com

info@westernhillcountryrealty.com

830-683-4435