



905 S. Fillmore St., Ste 102  
Amarillo, TX 79101  
**Phone:** 806-355-9856  
**Fax:** 806-358-3481

## HARPER COUNTY RANCH



**Price:** \$1,950,000.00

**Total Acres:** 2796

**Irrigated Acres:**

**Dryland Acres:**

**Grass Acres:** 2796

**CRP Acres:**

**CRP Payments:**

**CRP Expiration:**

**Taxes:**

**FSA Payments:**

**Mineral Rights:** None

### PRICE REDUCED

This is a very nice, clean ranch in the south central part of Harper county. This property offers the blend of rolling hills to deep canyons. The grass has not been abused and offers plenty of grazing for new buyers. The canyons and draws offer great protection to cattle and wildlife all year long. Being 30 miles northwest of Woodward, this ranch would offer a close getaway with some outdoor recreation, hunting and fishing. If you are looking for a cow ranch that will offer some good wildlife, this ranch needs to be on your list.

## Harper Co Ranch



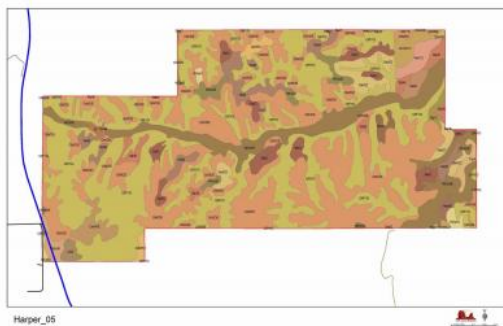
From the intersection of US 412 and 183 just west of Fort Supply, OK go 7 miles north the South West corner of the ranch

Latitude: 36.672027

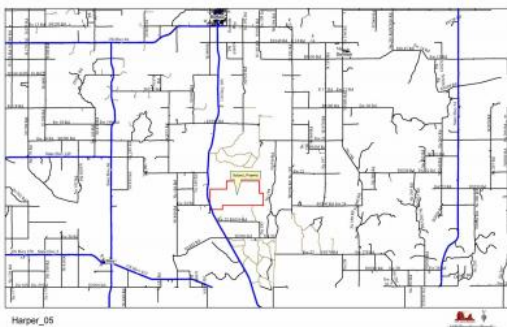
Longitude: -99.635038



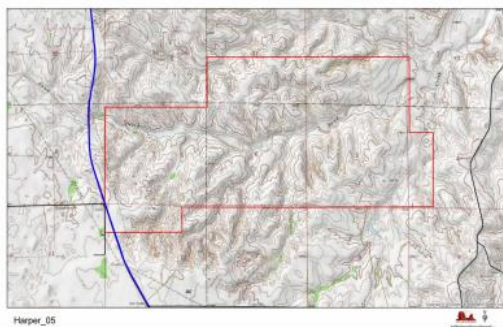
Harper\_05



Harper\_05



Harper\_05



Harper\_05

## Listing Agent



**Bryan Clift**  
(<https://www.cliftlandbrokers.com/agent/bryan-clift/>)

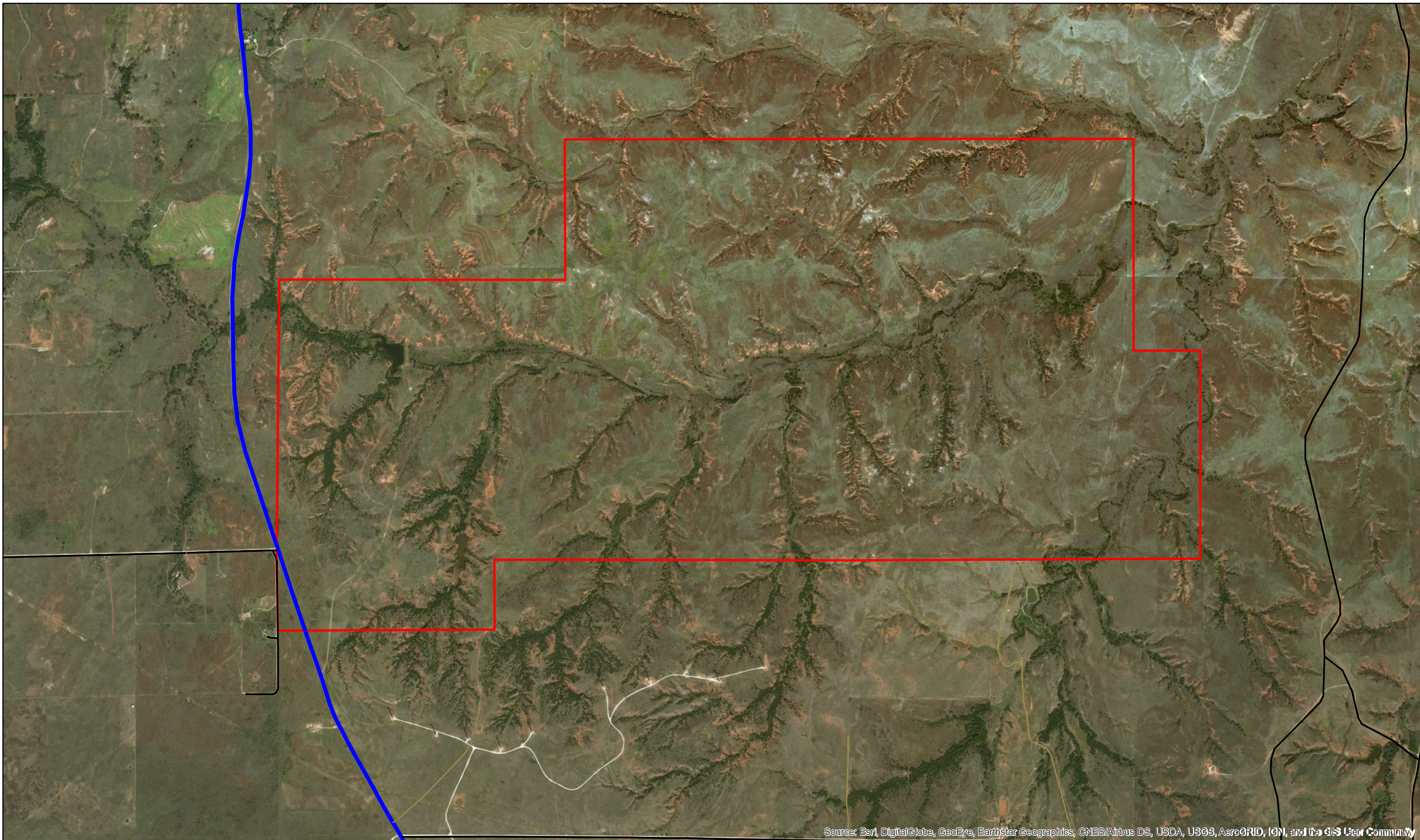
Email  
(mailto:[Bryan@CliftLandBrokers.com](mailto:Bryan@CliftLandBrokers.com))  
806-679-  
9421

URL to article: <https://www.cliftlandbrokers.com/property/harper-county-ranch/>

[Click here to pr](#)

Copyright © 2013 Clift Land Brokers. All rights reserved.

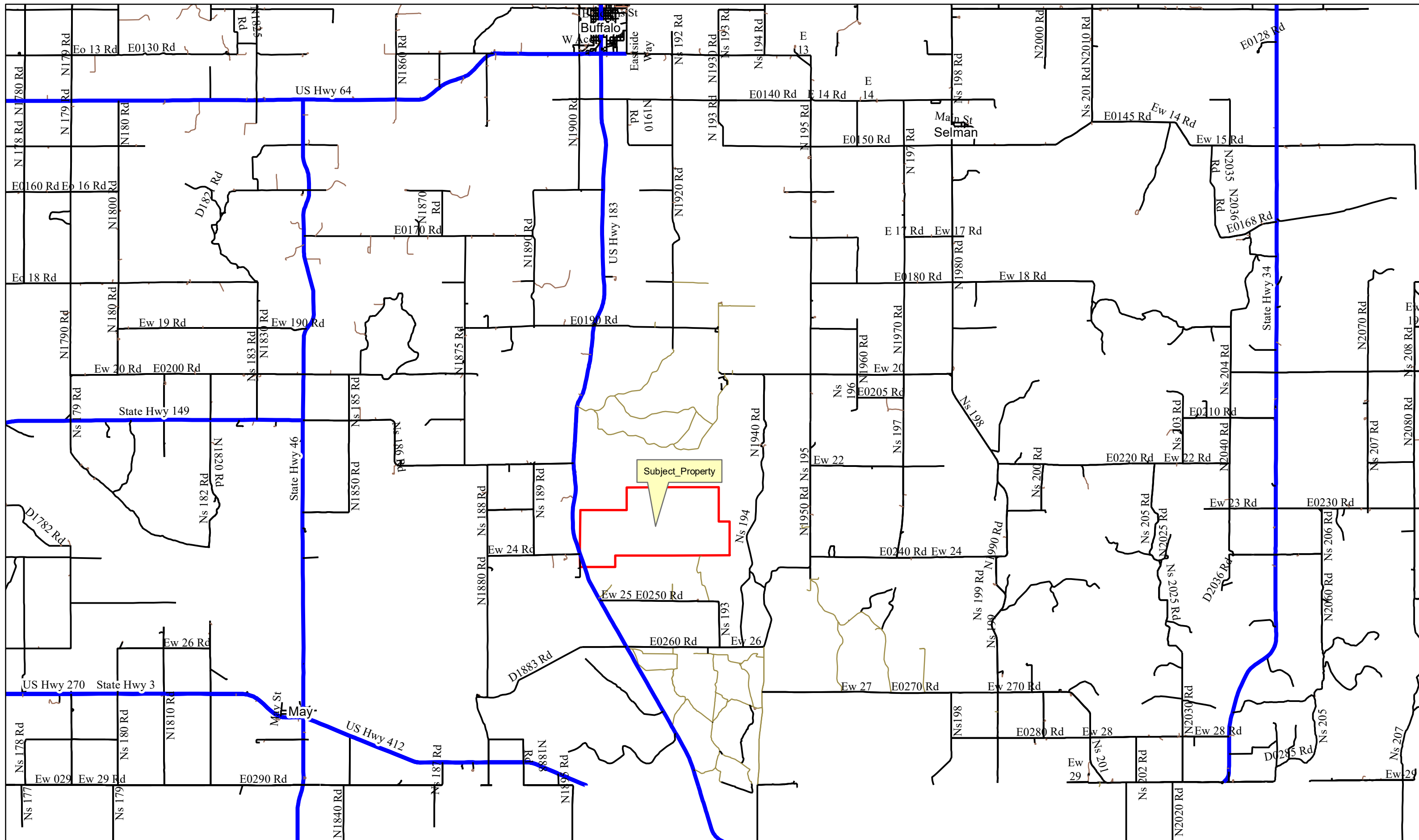


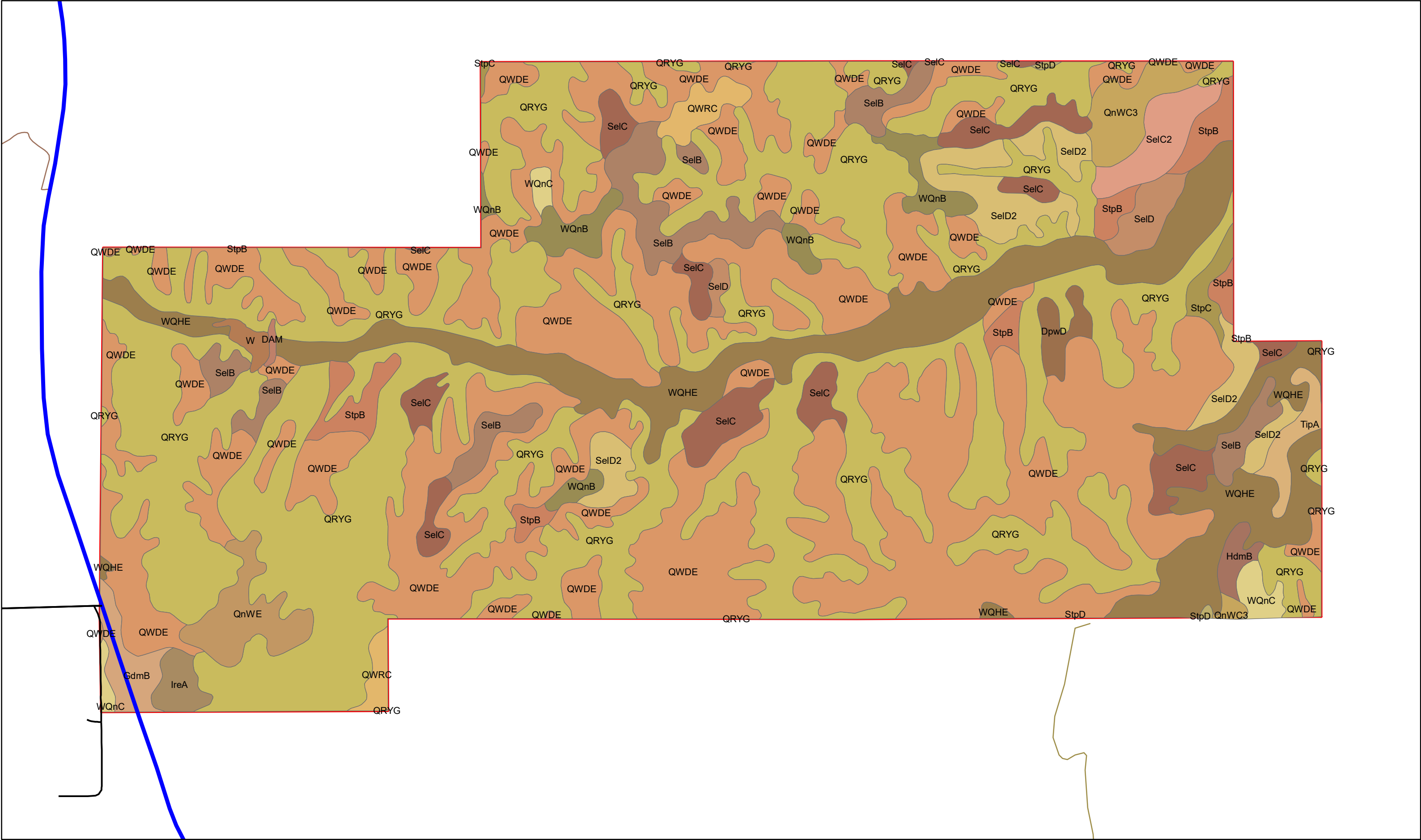


Source: Esri, DigitalGlobe, GeoEye, Earthstar Geographics, CNES/Airbus DS, USDA, USGS, AeroGRID, IGN, and the GIS User Community

Harper\_05

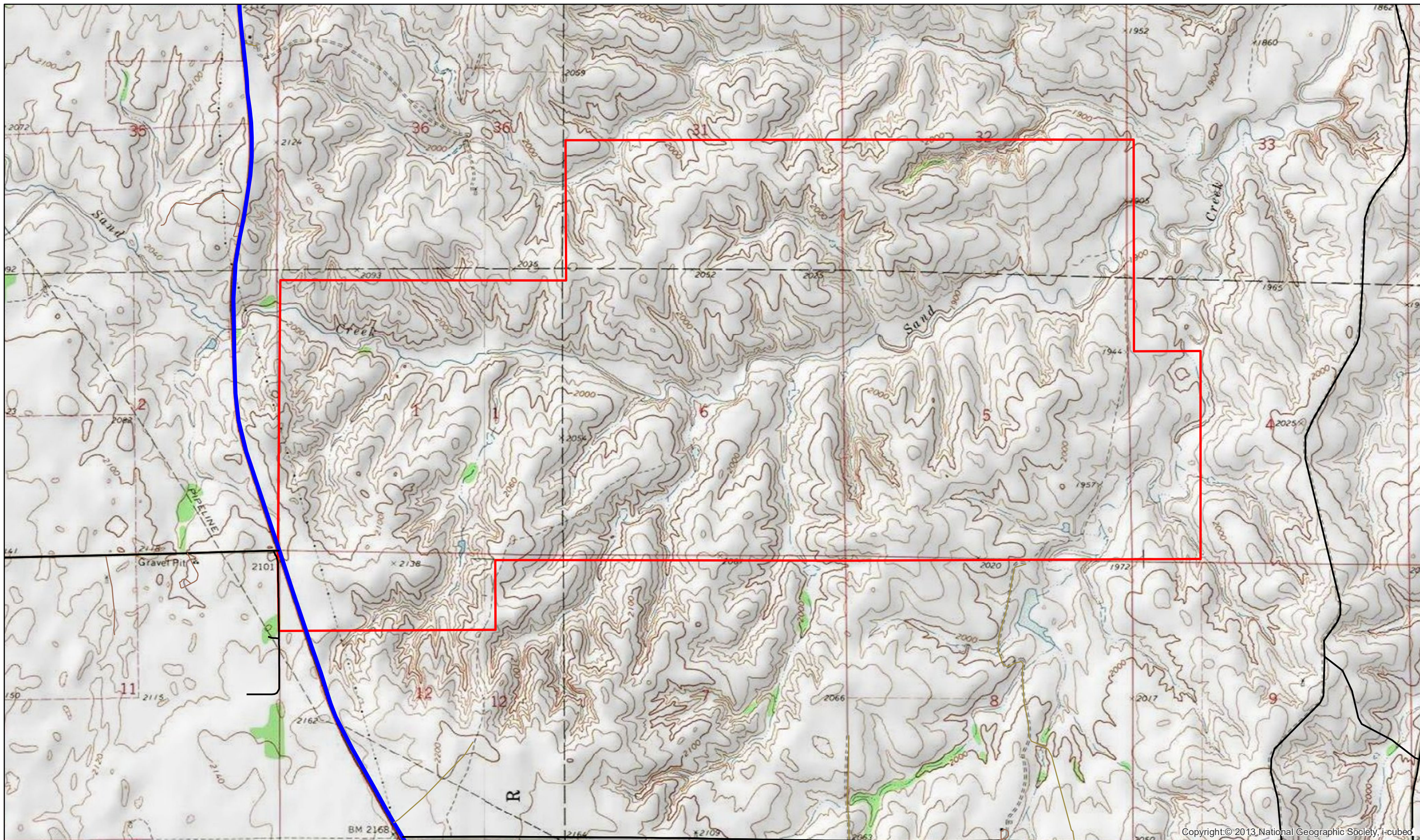






Harper\_05





Copyright © 2013 National Geographic Society, i-cubed

Harper\_05