



905 S. Fillmore St., Ste 102
Amarillo, TX 79101
Phone: 806-355-9856
Fax: 806-358-3481

TRI STATE AG / FARMERS GRAIN ELEVATOR





Price: \$765,000.00
Total Acres: 5.05
Irrigated Acres:
Dryland Acres:
Grass Acres:
CRP Acres:
CRP Payments:
CRP Expiration:
Taxes: 10155.53
FSA Payments:
Mineral Rights: none

CLB - Tri State Ag / Farmers Grain Elevator



Commercial Grain Elevator in Follett, Texas

This fully operating grain handling elevator is a solid piece of Texas panhandle history. Concrete fabricated in ~1947 (Southeast) and ~1951 (Northwest) respectively, these storage elevators are in current operating condition and ready to take grain.

Located in the Northeastern Texas panhandle in Follett, Texas on Texas highway 15 for ease of entry and exit, and an area known for wheat, milo and corn production. Within 25 miles to main rail system for transport if necessary. This elevator system is an excellent opportunity for centralized storage and distribution of grains to local, regional and

interstate markets. This facility operated through 2018, emptied, cleaned, inspected in 2019, and ready to be opened.

In addition to the grain handling facility, the office, scale system and fertilizer operation is included in the sale. All facilities are served by city services including water, gas, electric, sewage, and trash handling. The liquid fertilizer handling equipment have a 400 ton capacity with steel Palmer Tanks (4 – 16' X 30'), complete with pump and high volume water supply.

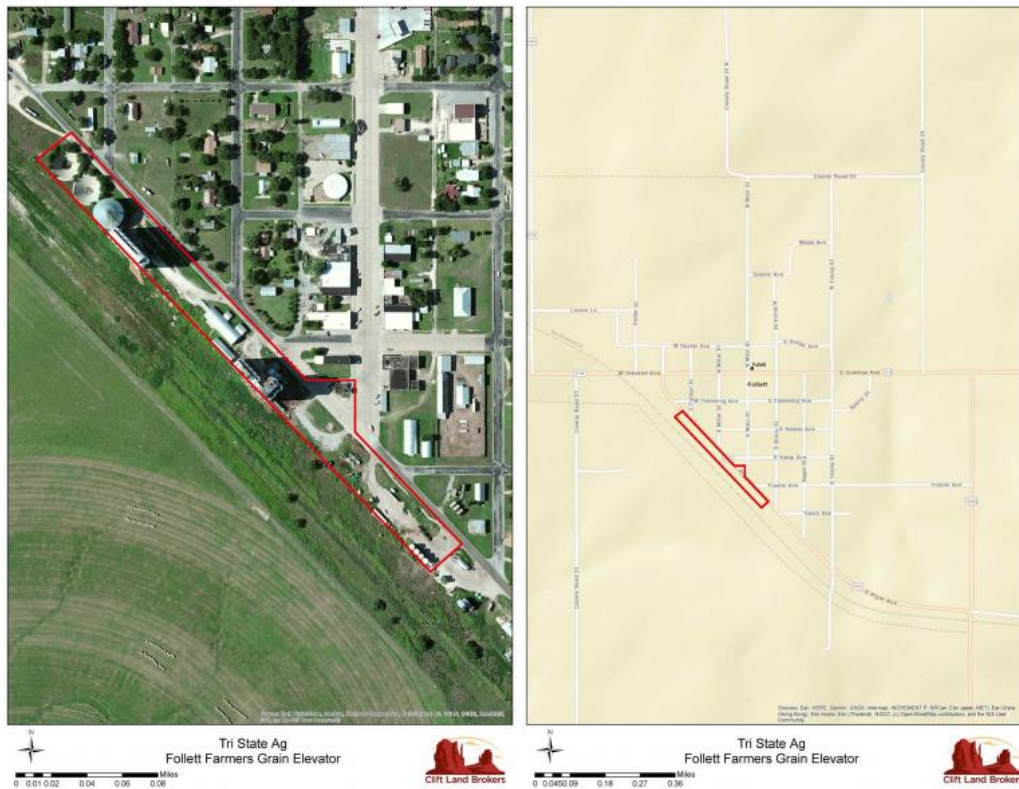
With farming the major economic business in the area, these facilities are an excellent opportunity to diversify an production operation and maintain marketing options throughout the year. The capacities allow for ease of use by individuals or corporate grain handling and storage.



Located in Follett, Texas, 79014

Latitude: 36.43029

Longitude: -100.14201



Listing Agent



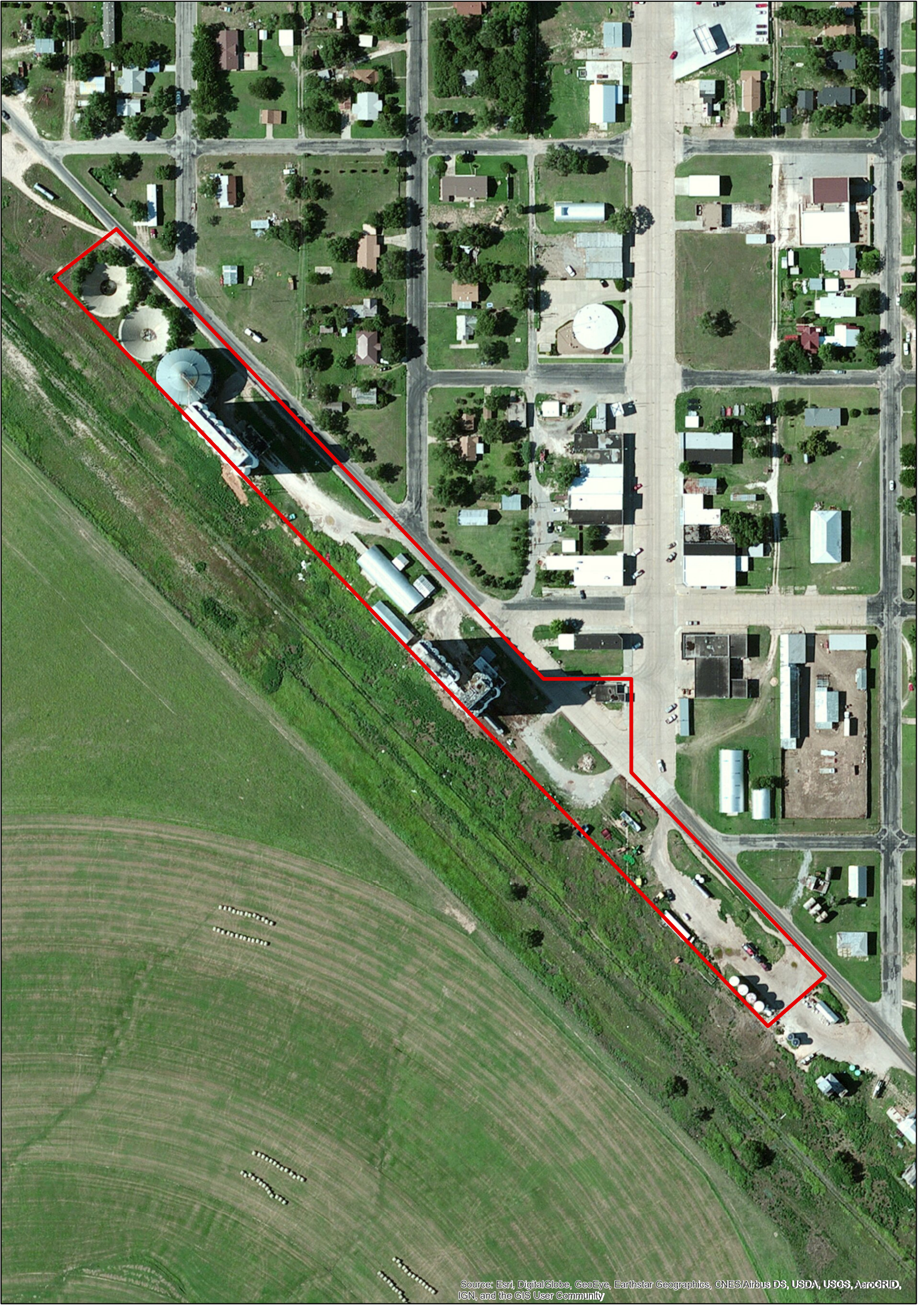
Greg Good
(<https://www.cliftlandbrokers.com/agent/greg-good/>)

Email
(mailto:Greg@CliftLandBrokers.com)
806-228-8140

URL to article: <https://www.cliftlandbrokers.com/property/tri-state-ag-farmers-grain-elevator/>

[Click here to pr](#)

Copyright © 2013 Clift Land Brokers. All rights reserved.



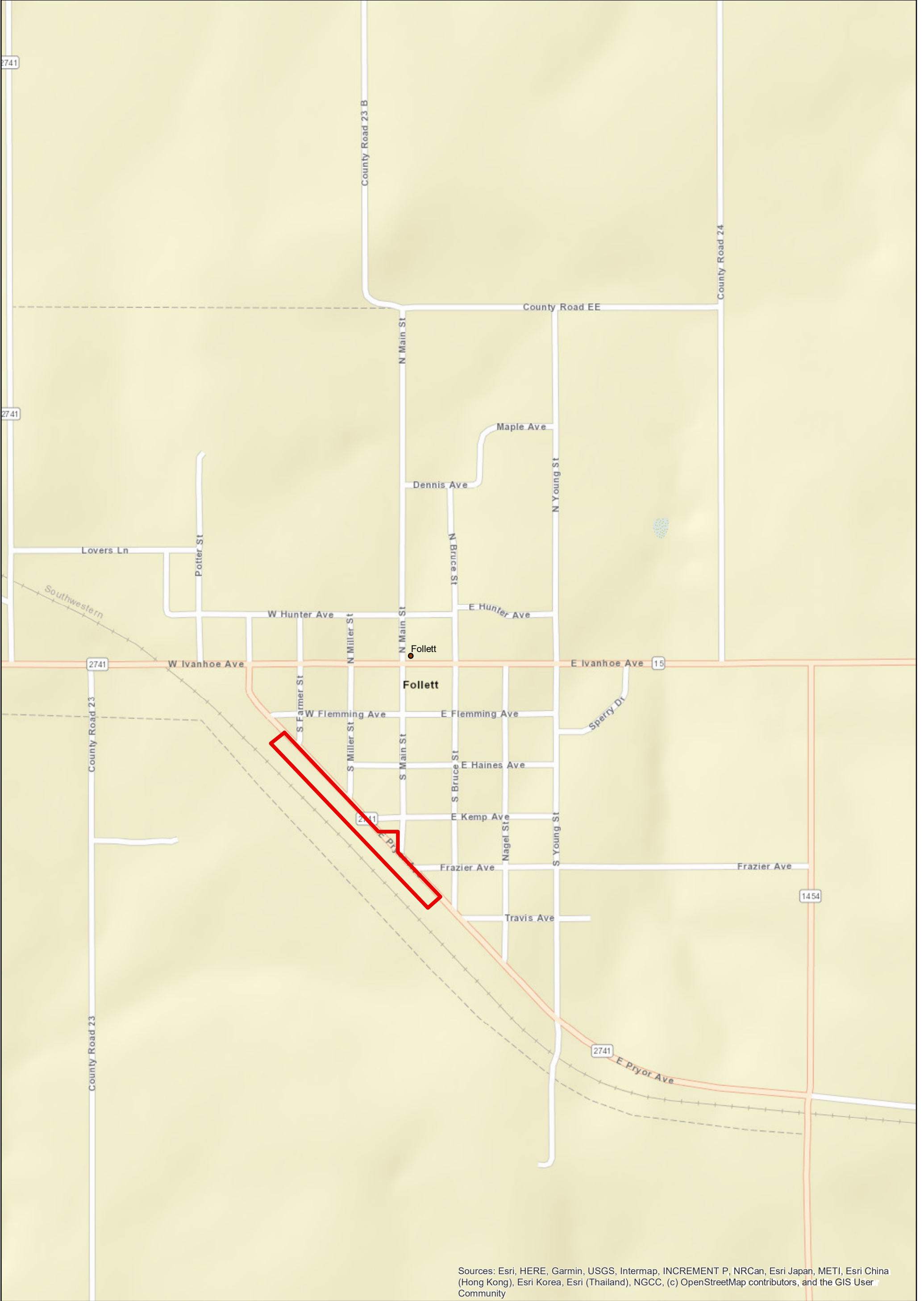
Source: Esri, DigitalGlobe, GeoEye, Earthstar Geographics, CNES/Airbus DS, USDA, USGS, AeroGRID, IGN, and the GIS User Community



0 0.01 0.02 0.04 0.06 0.08 Miles

Tri State Ag Follett Farmers Grain Elevator





Sources: Esri, HERE, Garmin, USGS, Intermap, INCREMENT P, NRCan, Esri Japan, METI, Esri China (Hong Kong), Esri Korea, Esri (Thailand), NGCC, (c) OpenStreetMap contributors, and the GIS User Community



0 0.0450.09 0.18 0.27 0.36 Miles

Tri State Ag Follett Farmers Grain Elevator

