



905 S. Fillmore St., Ste 102  
Amarillo, TX 79101  
Phone: 806-355-9856  
Fax: 806-358-3481

## Roosevelt Co. Grain Facility





in Rogers NM on S. Roosevelt Road.

Latitude: 33.980093

Longitude: -103.231997



## Listing Agent



**Eric Turpen**  
(<https://www.cliftlandbrokers.com/agent/eric-turpen/>)

Email  
(mailto:Eric@CliftLandBrokers.com)  
806-679-6206

URL to article: <https://www.cliftlandbrokers.com/property/roosevelt-co-grain-facility/>

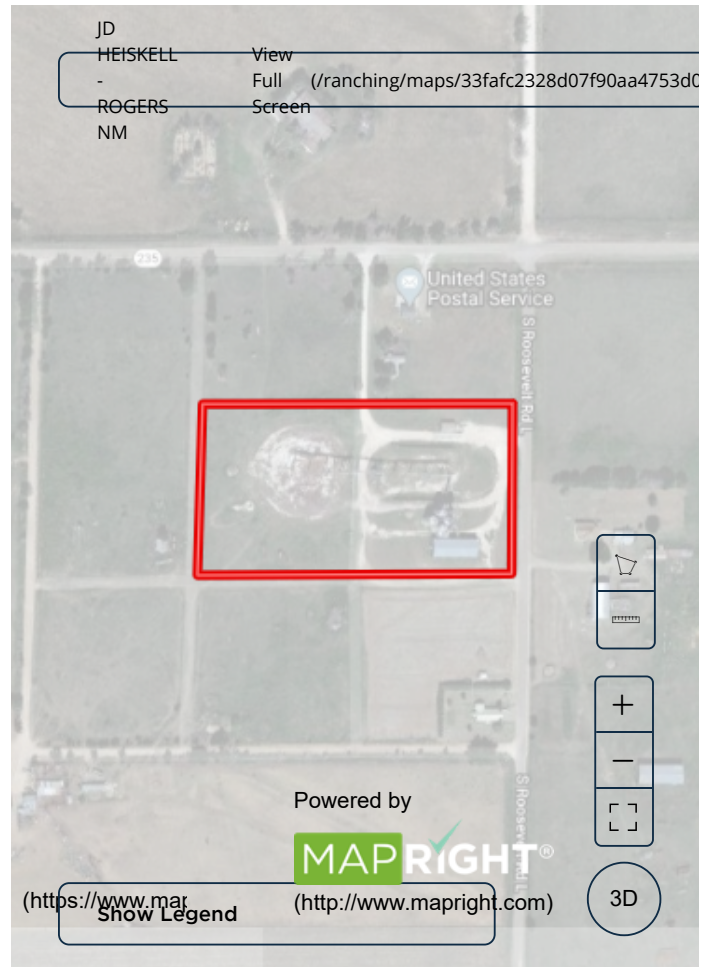
Click [here](#) to pri



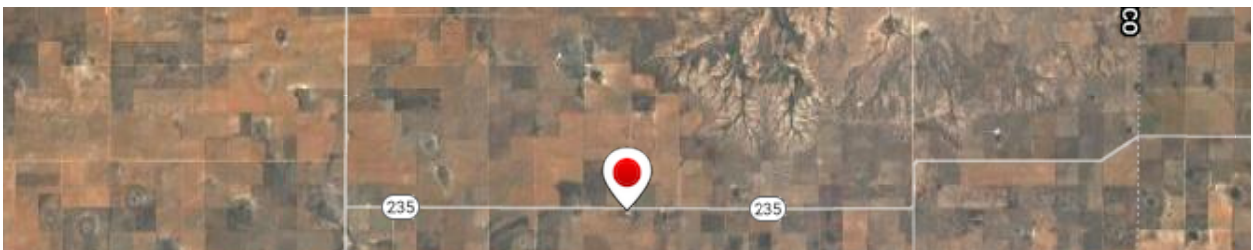




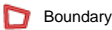
**Price:** \$130,000.00  
**Total Acres:** 6.4  
**Irrigated Acres:**  
**Dryland Acres:**  
**Grass Acres:**  
**CRP Acres:**  
**CRP Payments:**  
**CRP Expiration:**  
**Taxes:**  
**FSA Payments:**  
**Mineral Rights:** none



This grain facility has a small leg and pit with three bins, and a larger leg and pit with 3 bins and ground storage. There is 52,000 bushels of bin storage plus ground storage. There is a small office with digital scales. There is a domestic well providing water to the property. There is a nice 40' X 100' metal shop with a concrete floor. This location offers nice equipment storage and grain storage options.







Boundary







Boundary



