



905 S. Fillmore St., Ste 102  
Amarillo, TX 79101  
Phone: 806-355-9856  
Fax: 806-358-3481

## Bailey Co. Grain Facility

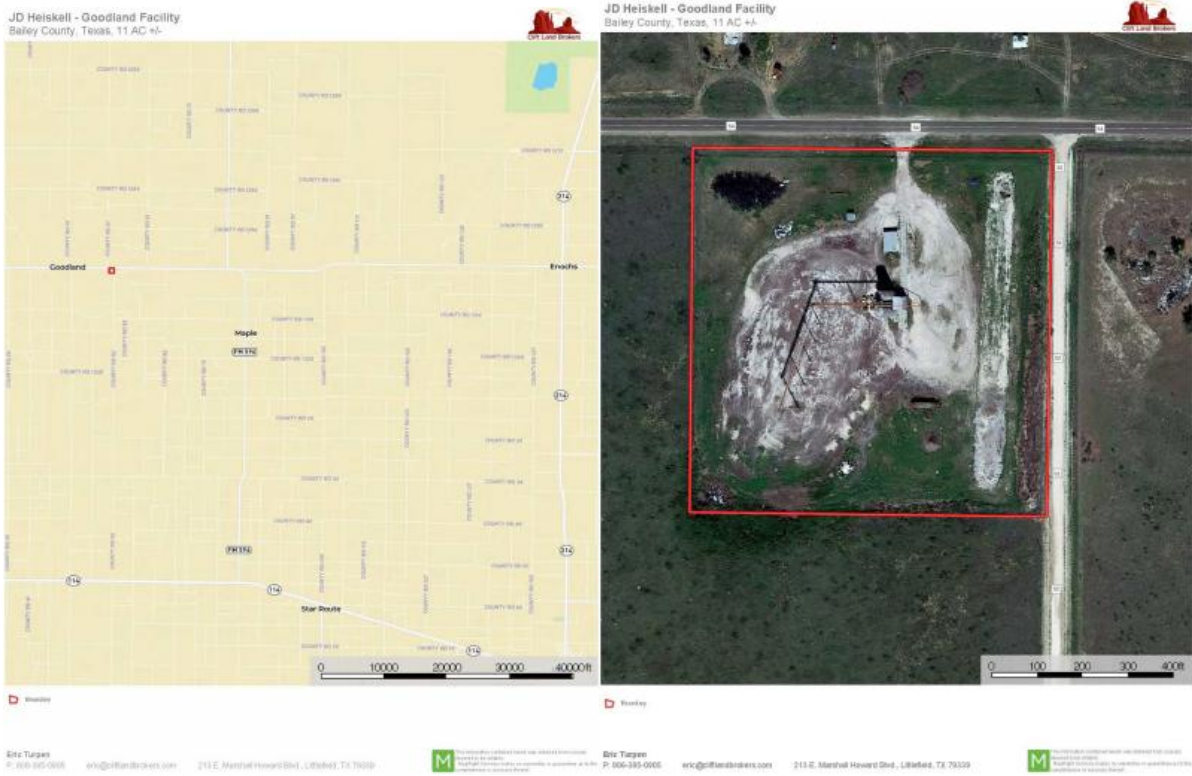




Eleven miles west of Enochs, TX on HWY 54

Latitude: 33.87173

Longitude: -102.956734



## Listing Agent



**Eric Turpen**  
(<https://www.cliftlandbrokers.com/agent/eric-turpen/>)

Email  
(mailto:Eric@CliftLandBrokers.com)  
806-679-  
6206

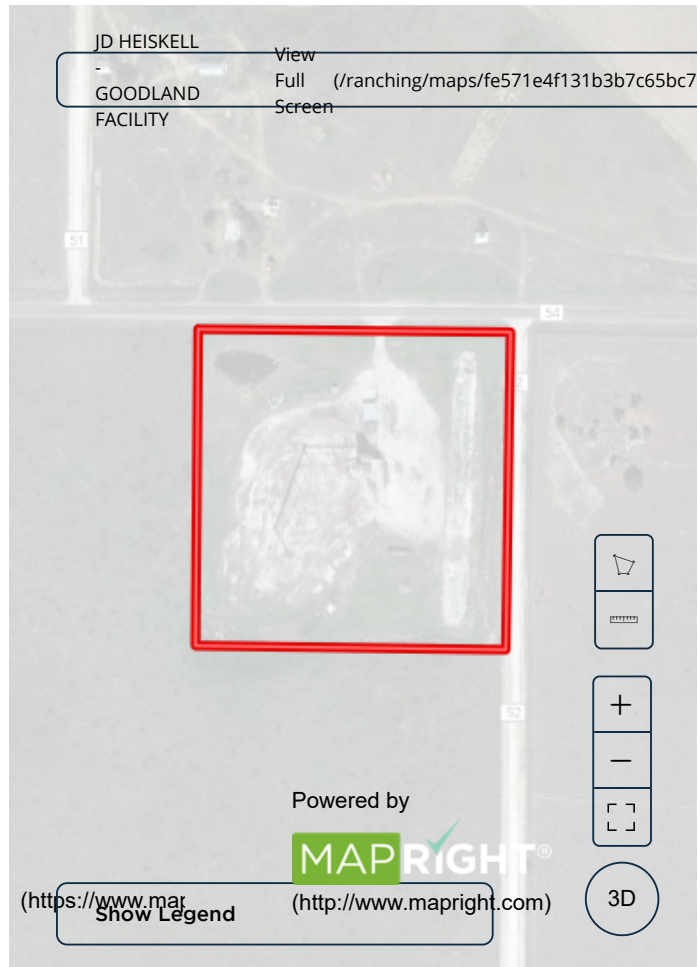
URL to article: <https://www.cliftlandbrokers.com/property/bailey-co-grain-facility/>

Click [here](#) to pri

Copyright © 2013 Clift Land Brokers. All rights reserved.




**Price:** \$115,000.00  
**Total Acres:** 11  
**Irrigated Acres:**  
**Dryland Acres:**  
**Grass Acres:**  
**CRP Acres:**  
**CRP Payments:**  
**CRP Expiration:**  
**Taxes:** 579.19  
**FSA Payments:**  
**Mineral Rights:** none



Grain storage facility with 26,666 bushels of bin storage plus 200 ft of screw augers and towers and ground storage. The facility sits on 11 acres behind chain link fence. There is a climate controlled office with a set of full length digital scales. There is a domestic well on the property and internet service. The facility is OSHA Certified and has had grain and scale permits. This is a nice facility that could have many uses.





 Boundary

