

437 Main Street CHESTER, NJ

FOR SALE/LEASE
4.9 Acres
Land

206

24

9,580 VPD

Main St

513

Property Features

- 4.9 acre parcel on Main Street
- 16,000 SF building possible
- Open and wooded land
- Owner will consider sale or short/long term lease
- City water; septic required
- Land Lease: \$2,500 per month
- Inquire for sale price

For more information

Sig Schorr

973 463 1011 x177
sschorr@naihanson.com

NAI James E. Hanson
COMMERCIAL REAL ESTATE SERVICES, WORLDWIDE

FOLLOW US!      | NJ Offices: Teterboro | Parsippany | naihanson.com | Member of NAI Global with 375 Offices Worldwide

SERVICES OFFERED

Brokerage • Property Management • Corporate Services • Financing • Logistics • Government Services • Healthcare • Tenant Representation • Cold Storage • Investment Services

The information contained herein has been obtained from sources considered to be reliable, but no guarantee of its accuracy is made by NAI James E. Hanson

Site Survey

437 Main Street
CHESTER, NJ

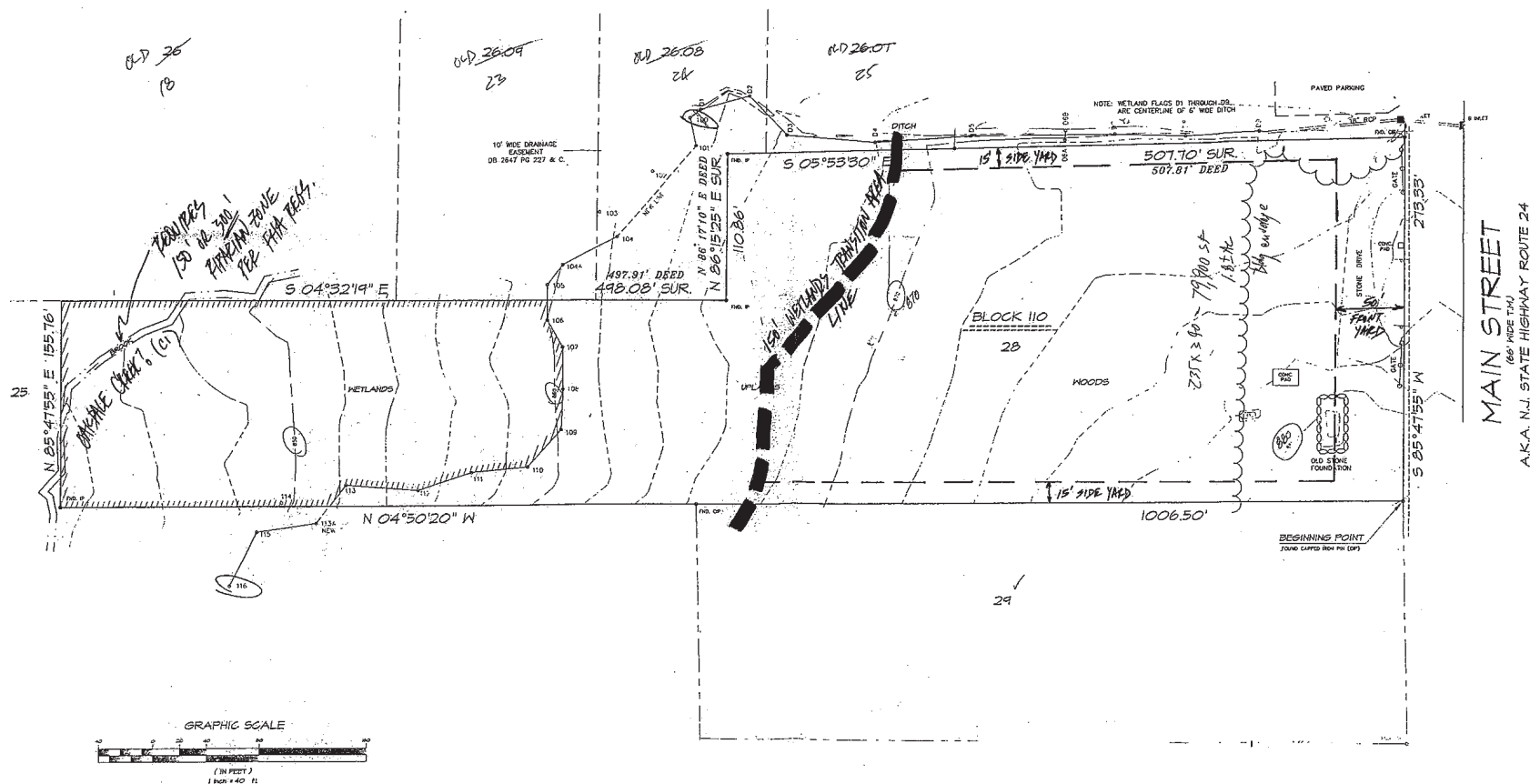
REFERENCES:

DEED BOOK 4365 PAGE 174
TAX MAP SHEETS 3 & 7



NOTES:

NO PROPERTY CORNER MARKERS HAVE BEEN SET.
CONTAINS 213,453 S.F. OR 4.9002 ACRES OF LAND.
ELEVATIONS BASED ON USC&GS MONUMENT NO. 2373 NGVD 1929.
CONTOURS INTERPOLATED FROM SPOT ELEVATIONS AND ARE APPROXIMATE.
WETLANDS SHOWN ARE AS DELINEATED BY C & H ENVIRONMENTAL, INC.
AREA OF WETLANDS CONTAINS 54,195 S.F. OR 1.2441 ACRES OF LAND.
WETLANDS SHOWN ARE AS FIELD LOCATED ON 8/18/07 & REVISED 2/28/08.



NAI James E. Hanson
COMMERCIAL REAL ESTATE SERVICES, WORLDWIDE

SERVICES OFFERED

Brokerage • Property Management • Corporate Services • Financing • Logistics • Government Services • Healthcare • Tenant Representation • Cold Storage • Investment Services

The information contained herein has been obtained from sources considered to be reliable, but no guarantee of its accuracy is made by NAI James E. Hanson