



Farmland Sales Specialists

Setting the trend for how Real Estate is sold in the Midwest.

www.BarnesRealty.com

18156 Hwy 59
Mound City, MO 64470
(660) 442-3177

1711 Oregon
Hiawatha, KS 66434
(785) 742-4580

1706 Prairie View Rd, Suite B
Platte City, MO 64079
(816) 219-3010

2.32 Acres +/- Homesite, Atchison County, MO
Own a piece of Atchison County, MO with close Interstate access.
It's well out of the flood plain, easy to get to and abundant with wildlife!

LOCATION:

Right off of Exit 99 on Interstate 29 approximately just 2 miles North of Corning, Missouri.

PRICE:

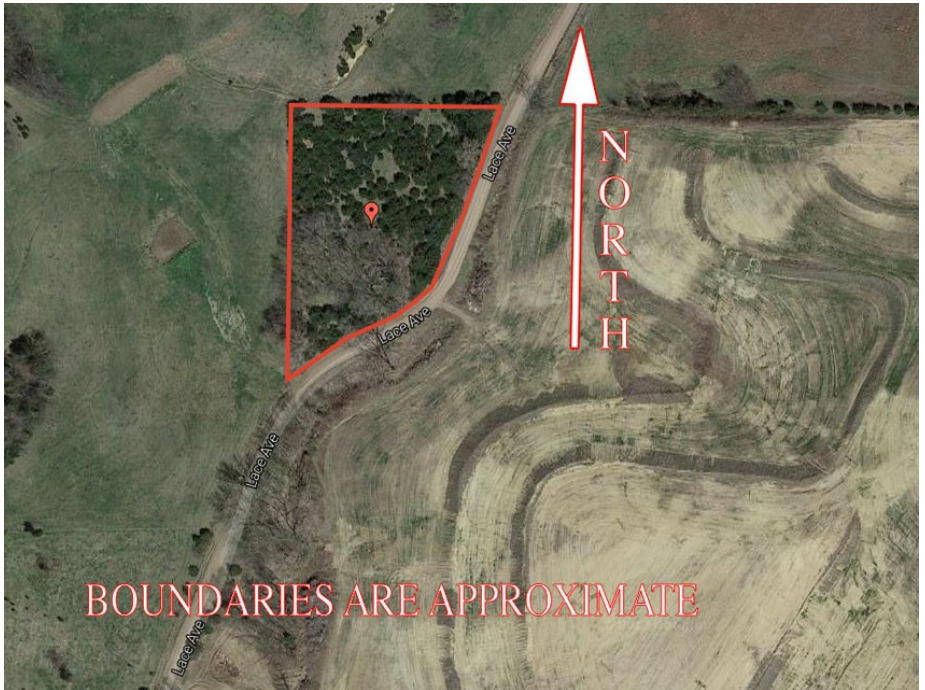
\$42,500.00 Total

IMPROVEMENTS:

The access road is being improved!
Electricity access coming soon!
This tract was once a building site
and has a cellar that may still be put
to good use.

TAXES/TAXABLE ACRES:

This tract is currently part of a larger
parcel. Therefore, taxes will be
determined.



AGENT/OWNER:

Jamie Barnes
(660) 851-1125 or jamie@barnesrealty.com

BROKER PARTICIPATION:

Barnes Realty Company, as listing Broker, will gladly and fully cooperate with most licensed Real Estate Brokers to obtain a sale of the property on terms satisfactory to the current Owners.

Setting the trend for how Real Estate is sold in the Midwest.

This information is thought to be accurate; however, it is subject to verification and no liability for error and omissions is assumed. Barnes Realty has made every effort to present accurate information on the property presented. Most of the information comes from outside sources: County/Government/Seller and human error can occur.

It's the Buyer's responsibility to satisfy himself with the information presented and to determine the information to be true and accurate and the property to be suited for his intended use. The listing may be withdrawn with or without approval. The Seller further reserves the right to reject any and all offers.

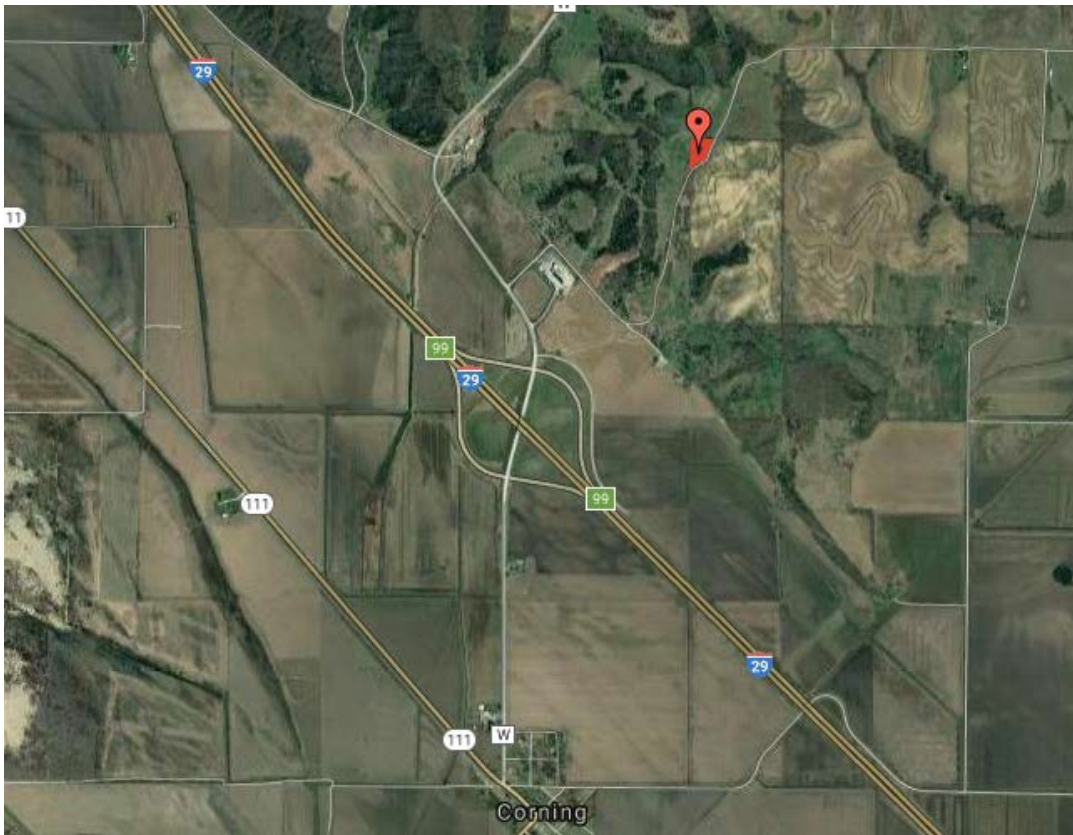
All inquiries, inspections, appointments, and offers must be sent through:

RICK BARNES, BROKER, BARNES REALTY COMPANY, 18156 HWY 59, MOUND CITY, MO 64470 PHONE NUMBER: 1-660-442-3177.

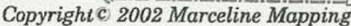
2.32 Acres +/- Homesite, Atchison County, MO
Google Aerial
39 Acre parcel that includes the 2.32 Acre Homesite



General Location Map



Driving Map



2.32 Acres +/- Homesite, Atchison County, MO Survey

