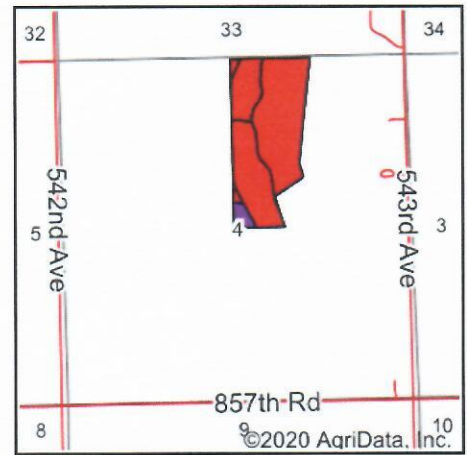
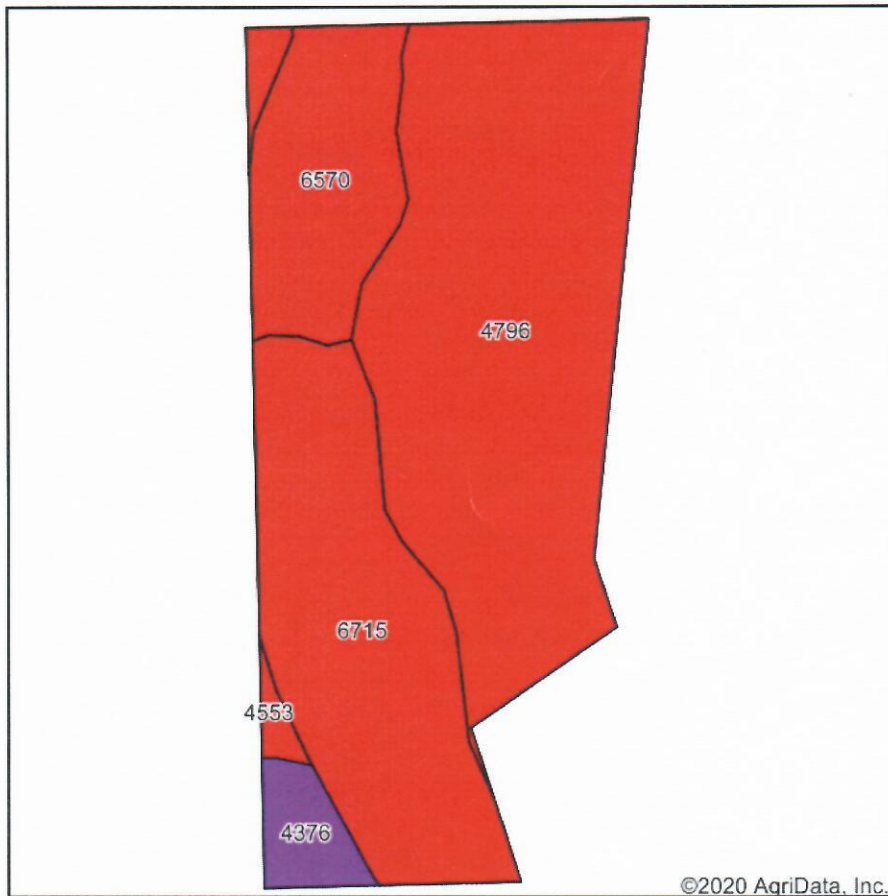


Soils Map



State: **Nebraska**
 County: **Pierce**
 Location: **4-26N-3W**
 Township: **Clover Valley**
 Acres: **58.74**
 Date: **9/22/2020**

Maps Provided By:

 CUSTOMIZED ONLINE MAPPING
 © AgriData, Inc. 2020 www.AgrDataInc.com



Soils data provided by USDA and NRCS.

©2020 AgriData, Inc.

Area Symbol: NE139, Soil Area Version: 19

Code	Soil Description	Acres	Percent of field	SRPG Legend	Non-Irr Class *c	Irr Class *c	SRPG	Alfalfa hay	Alfalfa hay Irrigated	Corn	Corn Irrigated	Grain sorghum	Grain sorghum Irrigated	Oats	Pasture	Rye	Soybeans	Soybeans Irrigated
4796	Valentine fine sand, rolling, moist	29.93	51.0%		Vle		21											
6715	Thurman-Valentine complex, undulating	17.13	29.2%		IVe	IVe	29	2	5	43	121	25	93			9	14	
6570	Thurman loamy fine sand, terrace, 0 to 2 percent slopes	8.41	14.3%		IIIe	IIIe	34											
4376	Loup fine sandy loam, rarely flooded	2.10	3.6%		Vw		56			30						3	10	10
4553	Elsmere loamy fine sand, 0 to 3 percent slopes	1.17	2.0%		IVw	IIIw	29	4		43	95			24	4	19	24	
Weighted Average							26.6	0.7	1.5	14.5	37.2	7.3	27.1	0.5	0.2	3.4	4.9	11

*c: Using Capabilities Class Dominant Condition Aggregation Method
 Soils data provided by USDA and NRCS.