

11956 Hwy 90 N, Bedias, TX 77831
Grimes County, Texas, 36.45 AC +/-

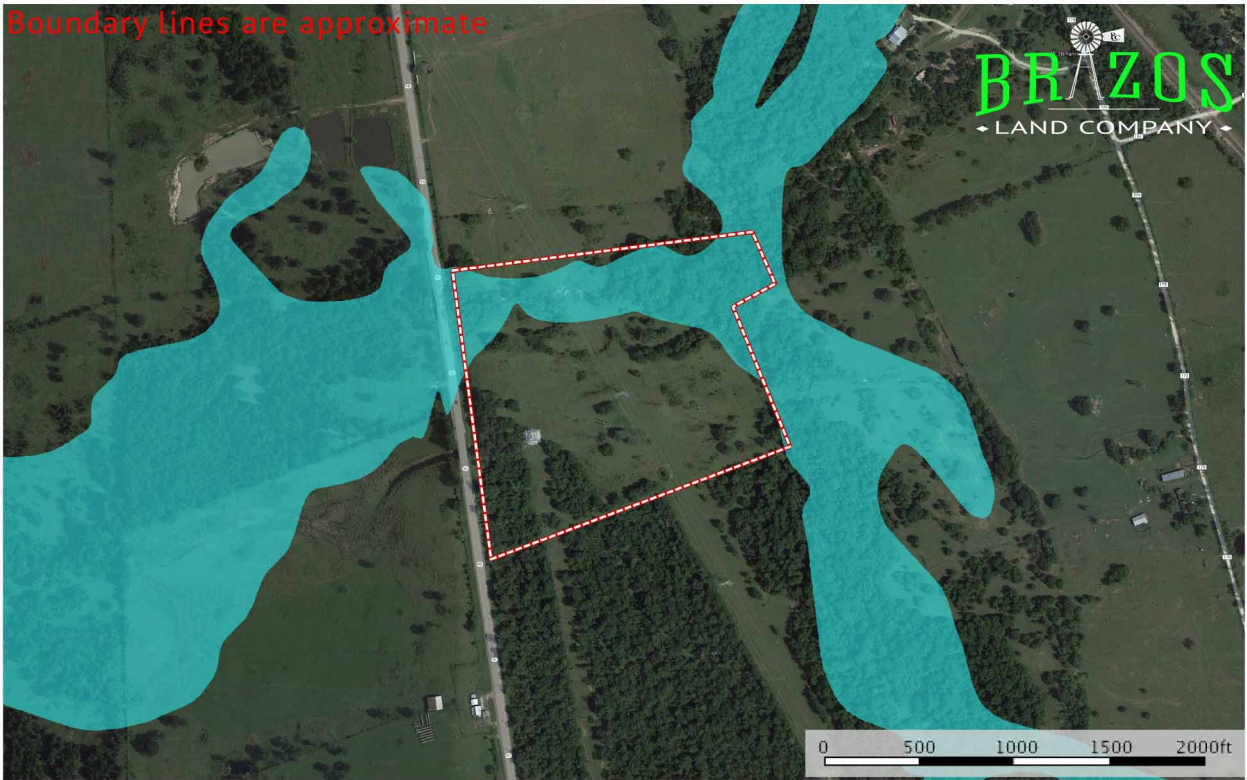
Boundary lines are approximate



 Boundary

11956 Hwy 90 N, Bedias, TX 77831
Grimes County, Texas, 36.45 AC +/-

Boundary lines are approximate

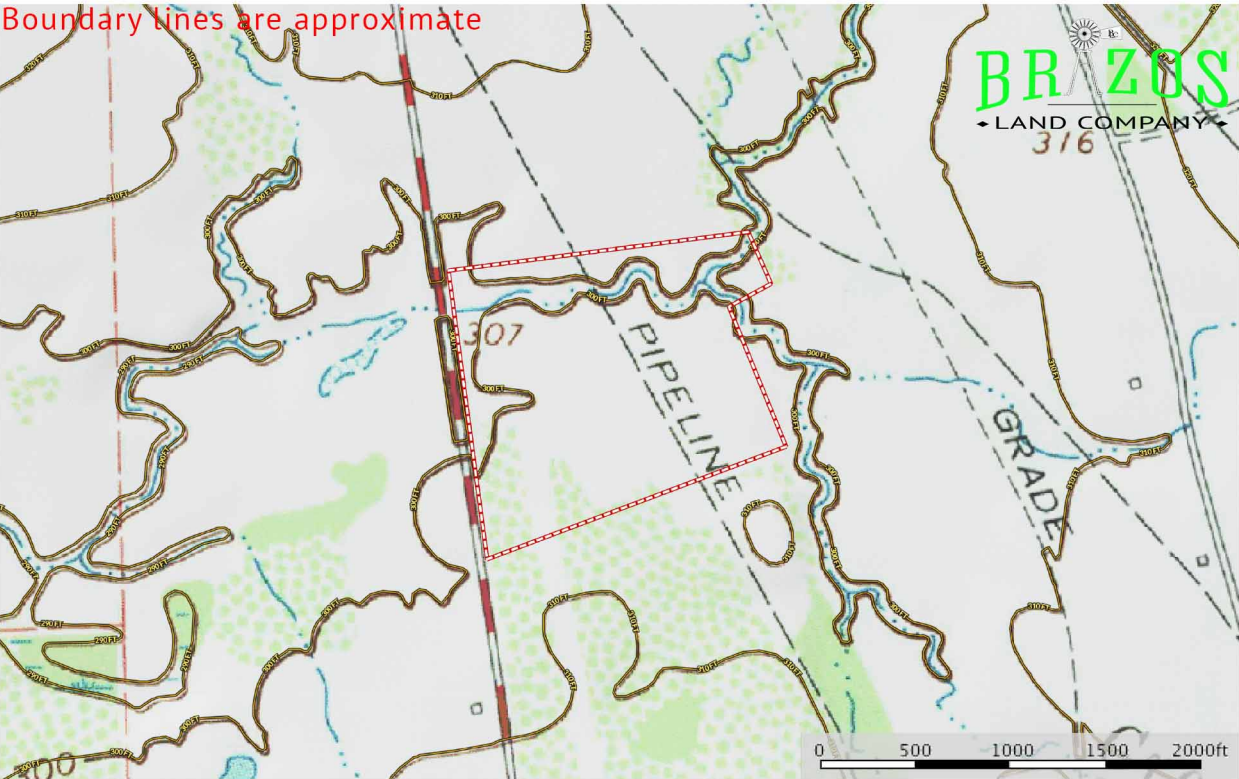


- Boundary
- 100 Year Floodplain
- 500 Year Floodplain
- Floodway
- Special
- Unmapped/ Not Included

11956 Hwy 90 N, Bédias, TX 778

Grimes County, Texas, 36.45 AC +/-

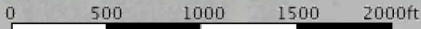
Boundary lines are approximate



 Boundary

11956 Hwy 90 N, Bédias, TX 77831
Grimes County, Texas, 36.45 AC +/-

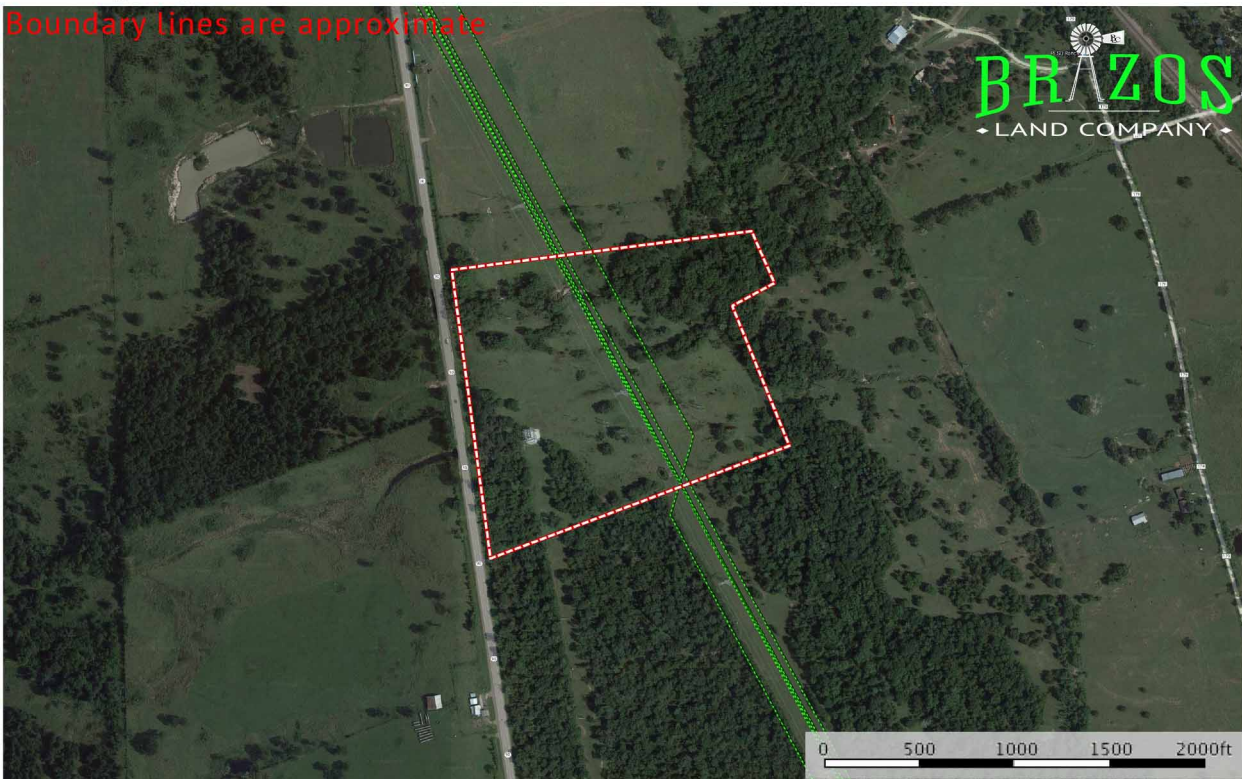
Boundary lines are approximate



 Boundary

11956 Hwy 90 N, Bedias, TX 77831
Grimes County, Texas, 36.45 AC +/-

Boundary lines are approximate



 Boundary  Crude Oil  Natural Gas  Other