

FLINT HILLS RANCH LAND

2,778.3 ± Total Acres
Offered in Greenwood & Elk County, KS

Salt Creek - Quality Pasture - Lakes - Heavy Timber - Fishing
Trophy Hunting - Ranch Headquarters & Pens - Rolling Terrain



ReeceNichols
SOUTH CENTRAL KANSAS
An Independently Owned and Operated Member of the Reece & Nichols Alliance, Inc.

SELLER: JLB ROCK CREEK RANCH LP

Offered By

JAKE STEVEN, ALC
(316) 708.5960
jake@reecenichols.com

JOHN RUPP, ALC
(316) 250.5198
johnrupp@reecenichols.com

TERRY RUPP, ALC
(316) 259.2106
terry@reecenichols.com

FALL RIVER, KS FLINT HILLS RANCH

2,778.30 ± Acres



Property Details

Total Acres: 2,778.30 +/- Acres

List Price: \$6,806,835.00

2020 Real Estate Taxes: \$11,981.08

Legal Description: Long legal. Please contact agents.

Mineral Rights: Seller's mineral interest transfers

Ranch Comments:

Extraordinary offering to purchase a large Flint Hills, Kansas ranch located in Greenwood and Elk County, Kansas! This area is well-known for being one of the finest native grass prairies in North America. The Flint Hills of Kansas are known for their excellent grassland and beautiful scenic views. This property also features some of the finest hunting land in the state of Kansas with a combination of heavy timber, creeks, ponds, and rolling terrain. This area is known for holding trophy whitetail deer and turkey. The ranch is currently primarily used for grazing cattle. There is ample water with lakes and creeks that provide water for the large cross fenced native and fescue pastures. The improvements include quality fence, a 2 bedroom home, multiple outbuildings and cattle pens. The ranch is easily accessible with quality ranch roads and conveniently located near Highway 400. This is an exceptional, truly once in a lifetime opportunity.

Ranch Headquarters Details

- Home
- Rural water and well water
- 2 bed, 2 bath
- 1,386 SF
- Barn: 1,728 SF
- Farm Utility Building: 1,800 SF
- Farm Utility Building: 1,120 SF
- Electronic Scale & Hydraulic Shoot
- Quality Cattle Pens



ReeceNichols
SOUTH CENTRAL KANSAS
An Equal Opportunity, Licensed and Equal Housing Member
of the Kansas Real Estate Association, Inc.

John Rupp, ALC

316.250.5198

johnrupp@reecenichols.com

Jake Steven, ALC

316.708.5960

jake@reecenichols.com

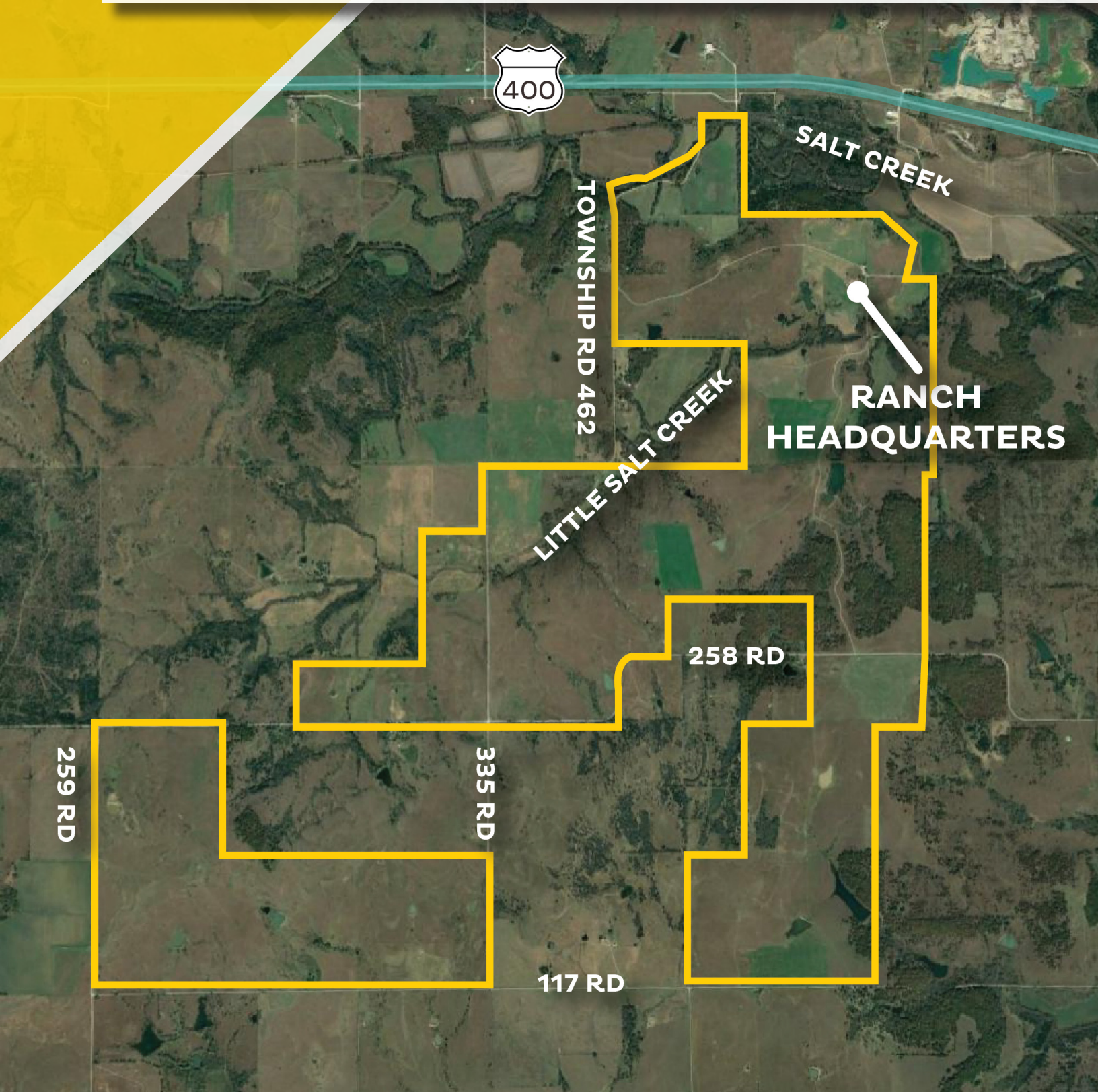
Terry Rupp, ALC

316.259.2106

terry@reecenichols.com

FALL RIVER, KS FLINT HILLS RANCH

2,778.30 ± Acres



ReeceNichols
SOUTH CENTRAL KANSAS
An Equal Opportunity, Diversity and Inclusion Employer
of the Reece & Nichols Companies, Inc.

John Rupp, ALC

316.250.5198

johnrupp@reecenichols.com

Jake Steven, ALC

316.708.5960

jake@reecenichols.com

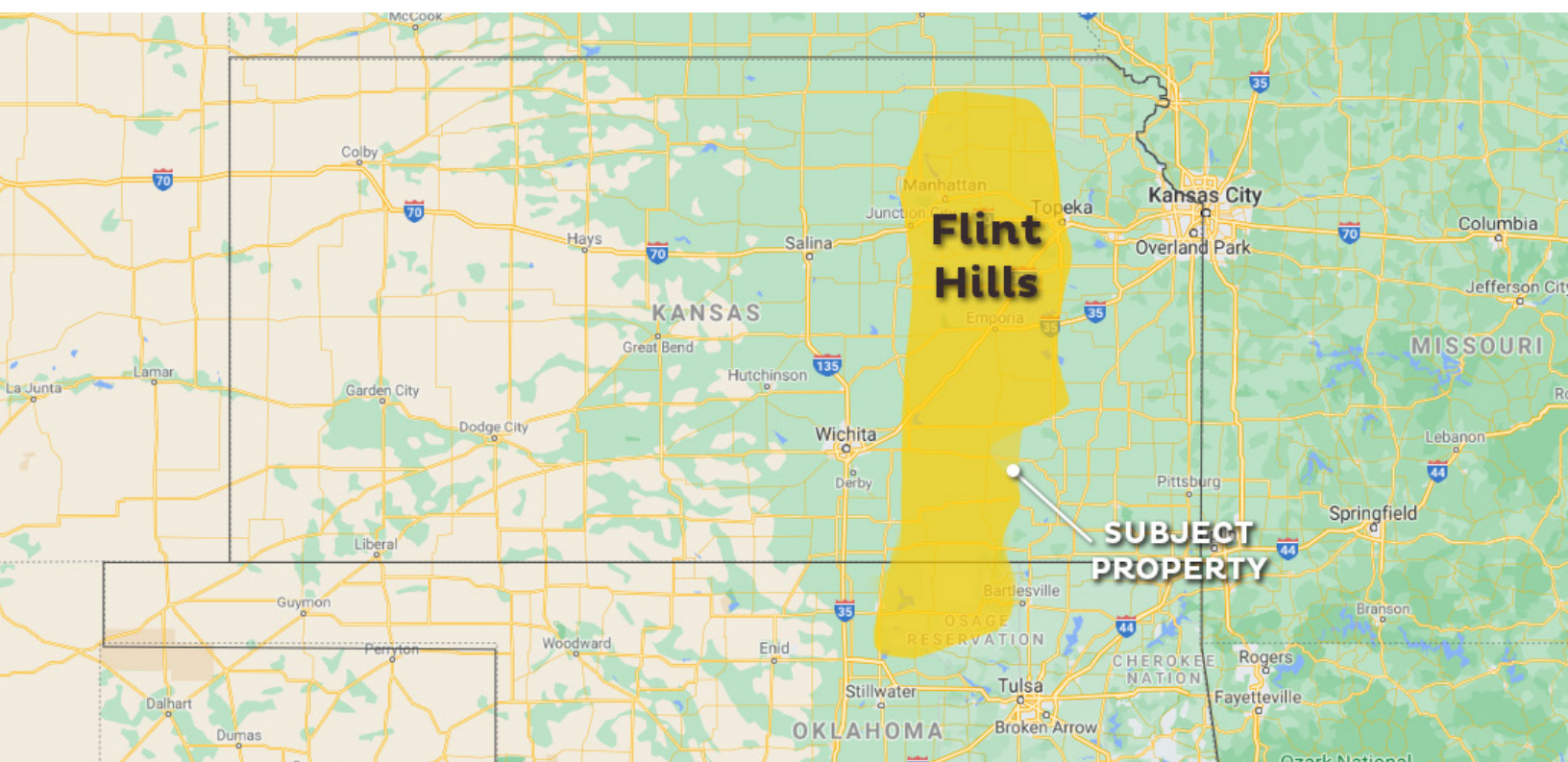
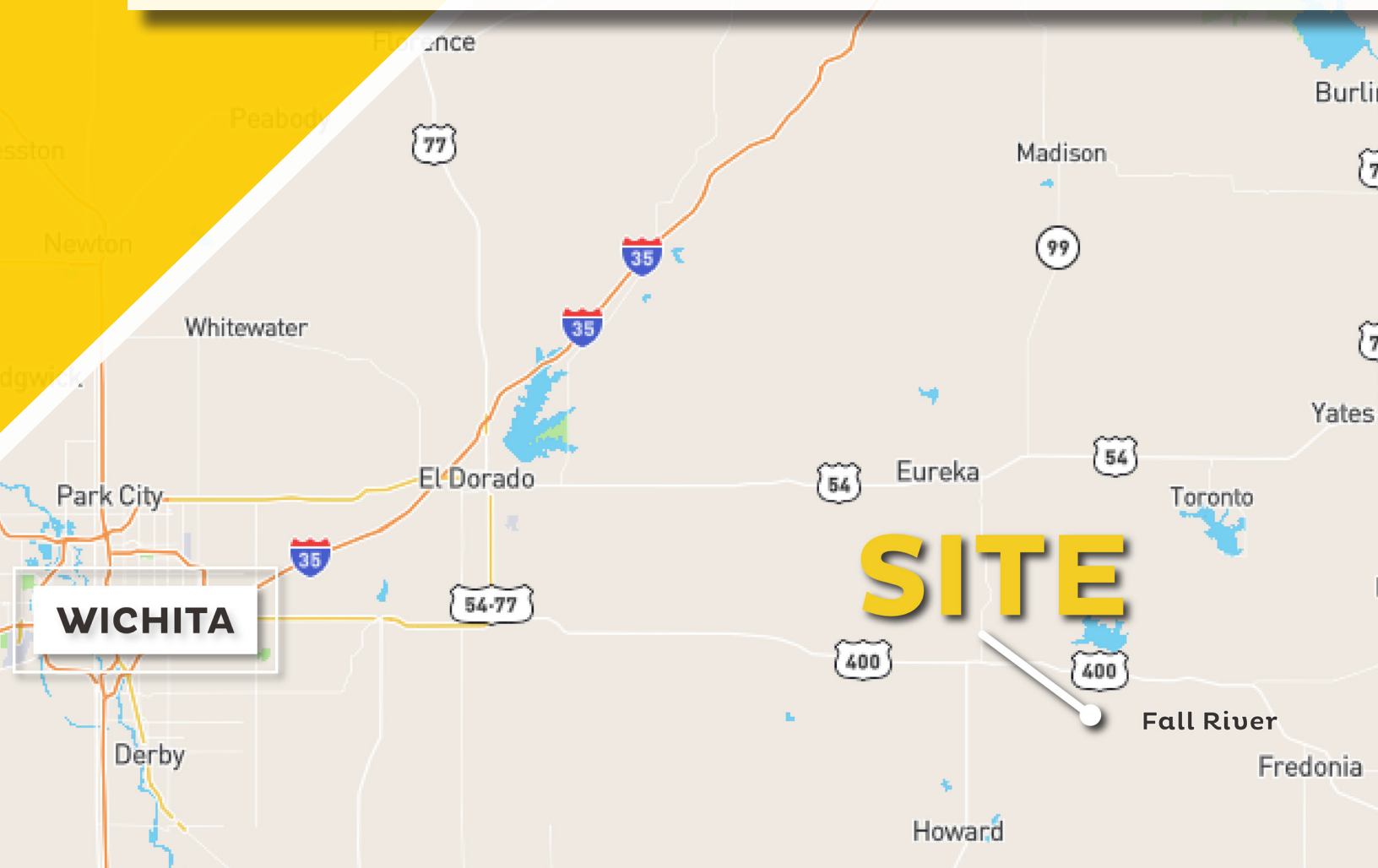
Terry Rupp, ALC

316.259.2106

terry@reecenichols.com

FALL RIVER, KS FLINT HILLS RANCH

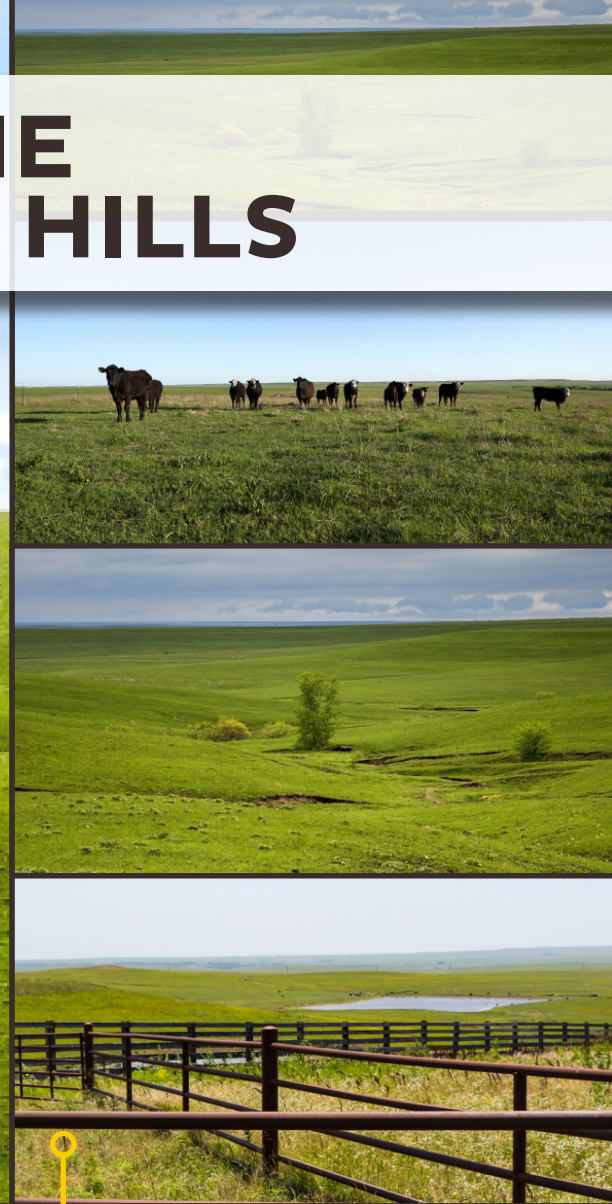
2,778.30 ± Acres



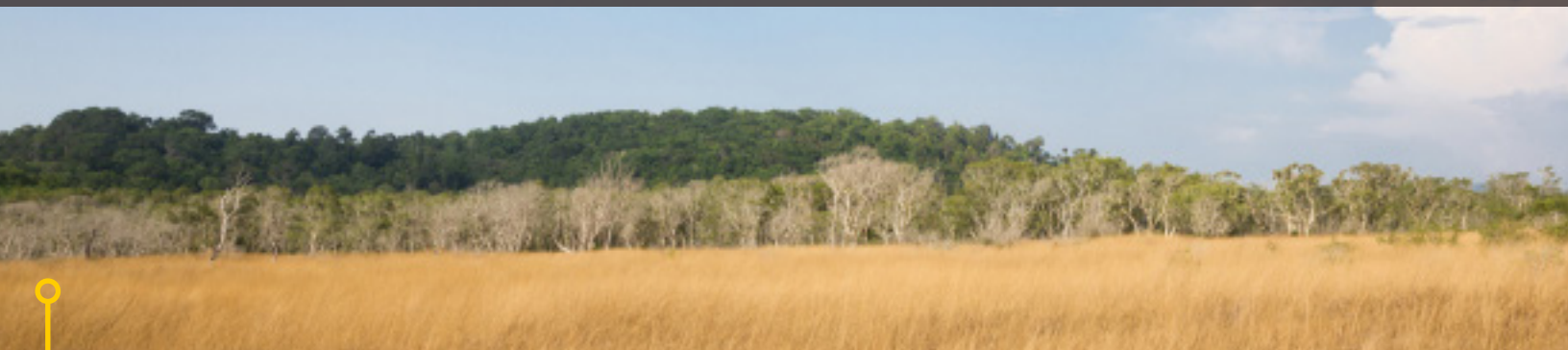
ABOUT THE KANSAS FLINT HILLS



The band of rolling hills that comprise the Flint Hills spans from Eastern Kansas to Northern Oklahoma. This distinct region has the densest coverage of tall grass prairie in North America.



The Flint Hills are named after the abundance of flint eroded from the bedrock at the surface.



Due to its rocky soil, the region is dominated by cattle ranches as opposed to the common Great Plains crop land. The Flint Hills represent the last expanse of intact tallgrass prairie in the nation. The Environmental Protection Agency and the World Wildlife Fund have designated the Flint Hills as an ecoregion, distinct from other grasslands of the Great Plains.