



First
COLORADO LAND
Office

LISTING BROKER

Jeanine Zeman, Broker Associate
Green, RSPS, ABR
719-207-3412 Cell
Zeman@FirstColorado.com



\$625,000
MLS #2678867

13435 CR 261 E, Nathrop

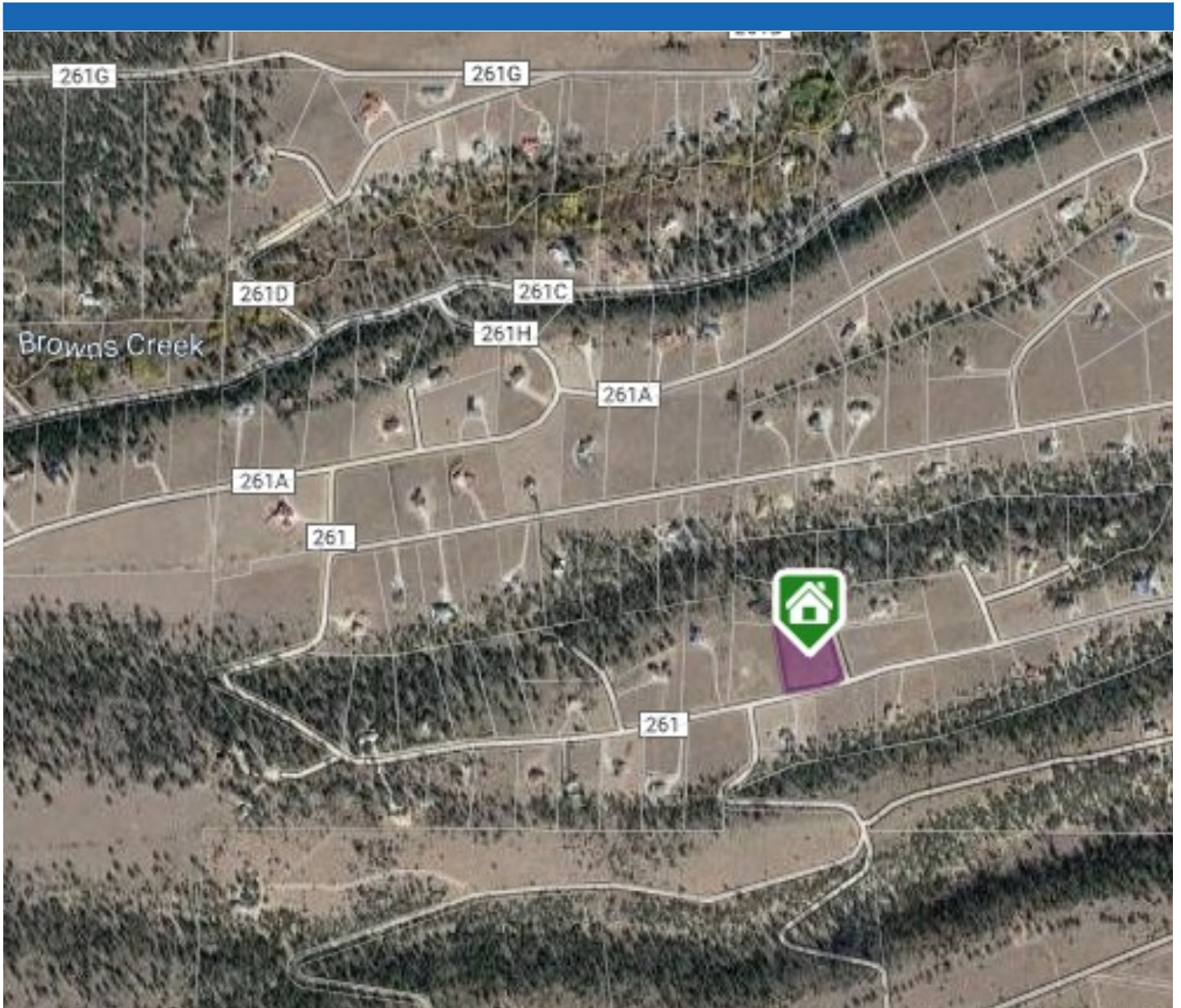


- ♦ 2.12 Acres
- ♦ 2,264 SF Modular Built in 2017
- ♦ 3 Bedrooms, 3 Baths, Bonus Rm
- ♦ Pellet Stove
- ♦ Granite Counters; Stainless Steel Appliances; T&G Ceilings
- ♦ Forced Air & Radiant Heat
- ♦ Community Well & Septic
- ♦ 2 Car Attached Garage
- ♦ HOA & Covenants
- ♦ Annual HOA Fee: \$90
- ♦ 2020 Taxes: \$1,364



FirstColorado.com – 719-539-6682 – 7385 W. Hwy 50 / PO Box 749 Salida, CO 81201

ALL DATA, MEASUREMENTS, SQUARE FOOTAGE, ETC. DEEMED RELIABLE. NO WARRANTIES OR REPRESENTATIONS EXPRESSED OR IMPLIED.



Directions: From Highway 285 go west on County Road 261, which is the entrance to Mesa Antero. Continue past the subdivision mailboxes until the road dead ends as you come up the hill, out of the trees. Turn right. Two story home with exterior staircase is on the right.



FirstColorado.com – 719-539-6682 – 7385 W. Hwy 50 / PO Box 749 Salida, CO 81201

ALL DATA, MEASUREMENTS, SQUARE FOOTAGE, ETC. DEEMED RELIABLE. NO WARRANTIES OR REPRESENTATIONS EXPRESSED OR IMPLIED.