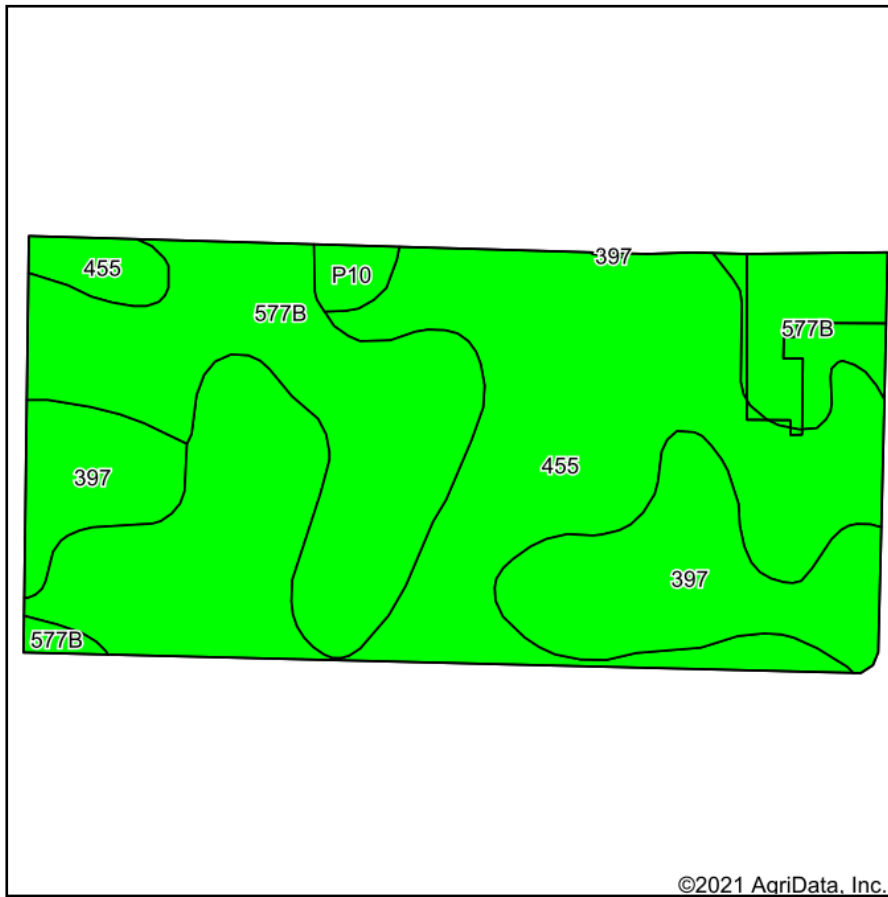
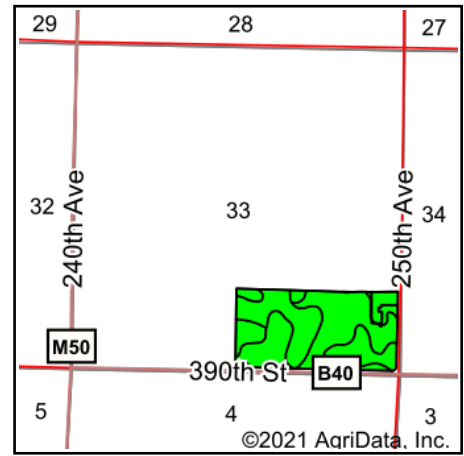


# Soils Map



Soils data provided by USDA and NRCS.



State: **Iowa**  
 County: **Clay**  
 Location: **33-96N-36W**  
 Township: **Sioux**  
 Acres: **75.25**  
 Date: **2/25/2021**

**MIDWEST LAND** & REAL ESTATE, INC.  
 712-262-3110 MANAGEMENT

Maps Provided By:



© AgriData, Inc. 2021

www.AgriDataInc.com



| Code             | Soil Description  | Acres | Percent of field | CSR2 Legend | Non-Irr Class *c | CSR2** | CSR |
|------------------|---|-------|------------------|-------------|------------------|--------|-----|
| 455              | Wilmonton clay loam, 1 to 3 percent slopes  | 38.22 | 50.8%            |             | Ie               | 91     | 74  |
| 577B             | Everly clay loam, 2 to 5 percent slopes   | 21.89 | 29.1%            |             | Ile              | 88     | 68  |
| 397              | Letri clay loam, 0 to 2 percent slopes  | 14.17 | 18.8%            |             | Ilw              | 90     | 72  |
| P10              | Afton silty clay loam, Sheldon creek formation, 0 to 2 percent slopes, occasionally flooded | 0.97  | 1.3%             |             | Ilw              | 82     |     |
| Weighted Average |   |       |                  |             |                  | 89.8   | *-  |

\*\*IA has updated the CSR values for each county to CSR2.

\*- CSR weighted average cannot be calculated on the current soils data, use prior data version for csr values.

\*c: Using Capabilities Class Dominant Condition Aggregation Method

Soils data provided by USDA and NRCS.