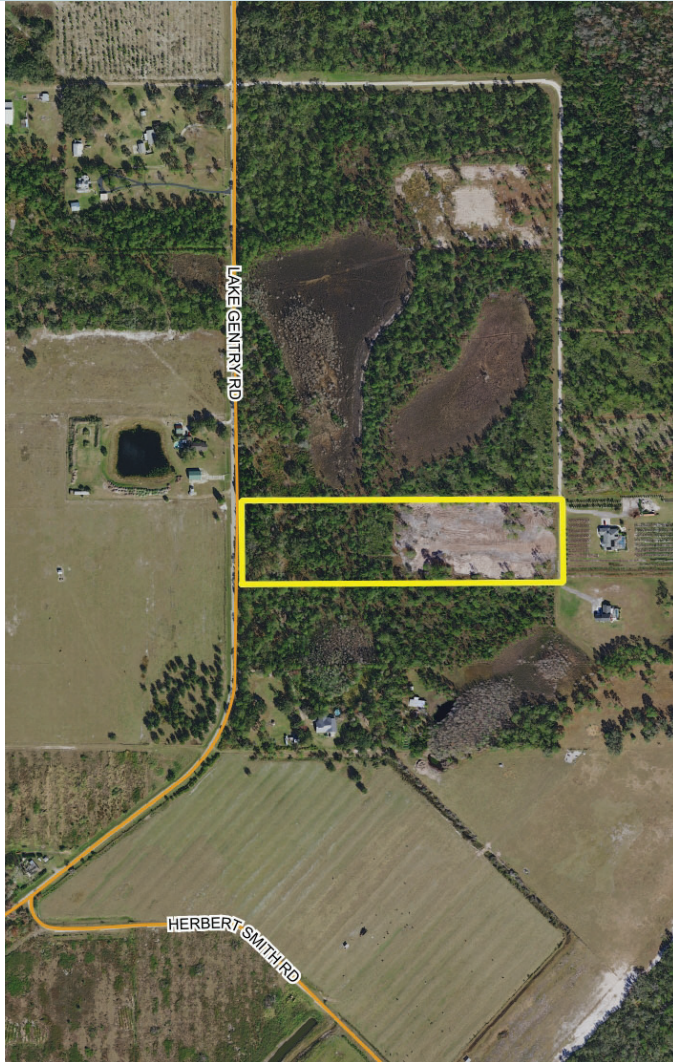


OSCEOLA COUNTY ACREAGE

10± acres
St. Cloud, FL

**UNDER
CONTRACT**

LAND FOR SALE



LOCATION/DESCRIPTION

A great opportunity to own 10 acres in Osceola County, conveniently located just a short drive from major shopping corridors. Property has been improved and is ready for a home site. This land is positioned just south of Hickory Tree Road and is a short drive from St. Cloud, Lake Nona, and Harmony. This property is also located just north of the boat ramp on Lake Gentry, and offers easy access to the Alligator chain of lakes.

SIZE

10± acres

PRICE

\$489,000

ZONING

Vacant Residential

ROAD FRONTAGE

320'± on Lake Gentry Road

UTILITIES

Well and Septic

PIDs

04-27-31-4950-0001-1070

04-27-31-4950-0001-1080

Offering subject to errors, omission, prior sale or withdrawal without notice.

— Commercial Real Estate Investments | Management | Brokerage | Development | Land —

Maury L. Carter & Associates, Inc.
407-422-3144 | www.maurycarter.com



OSCEOLA COUNTY ACREAGE

10± acres
St. Cloud, FL

**UNDER
CONTRACT**



PROPERTY MAP

— Commercial Real Estate Investments | Management | Brokerage | Development | Land

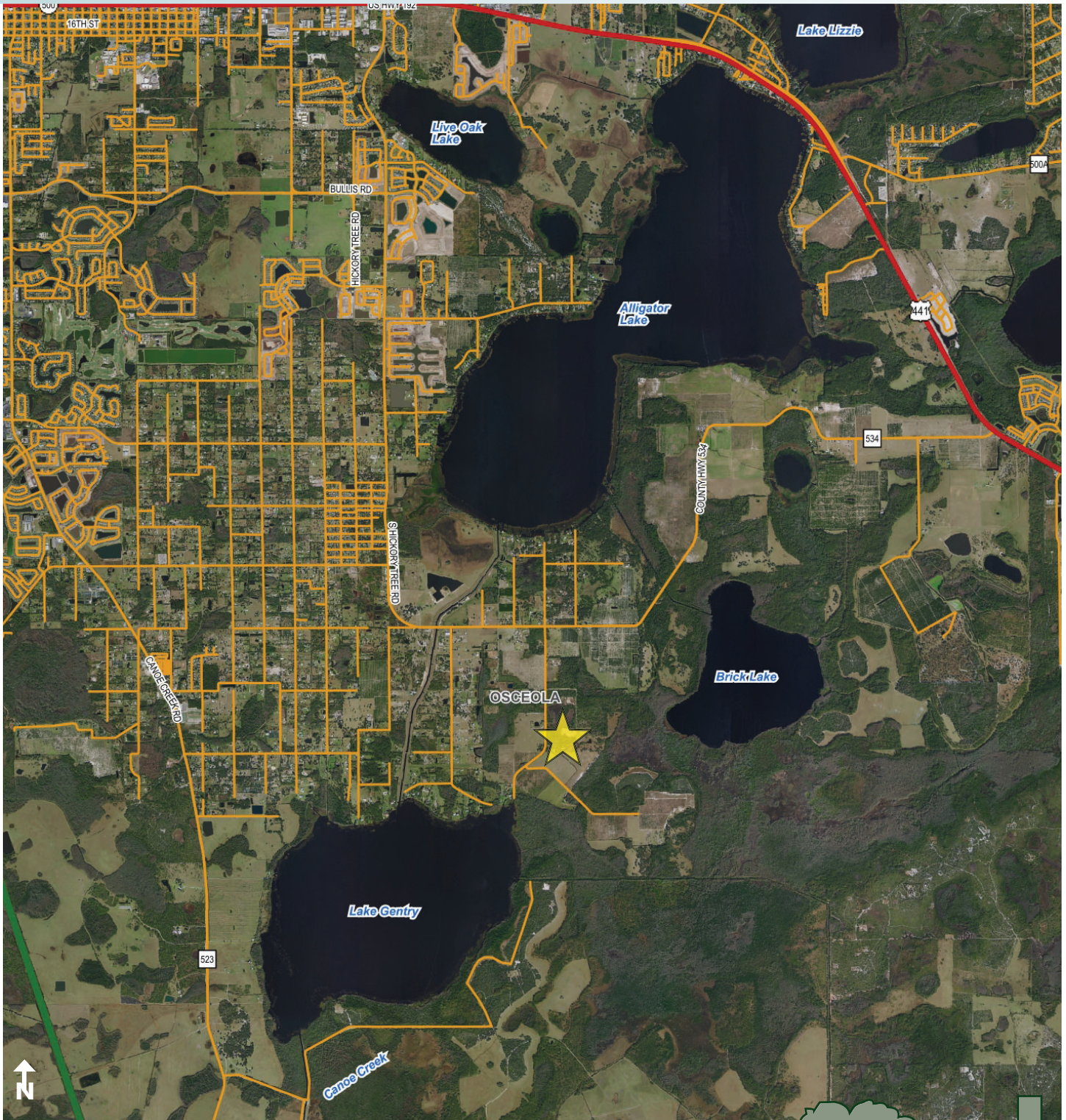
Maury L. Carter & Associates, Inc.
407-422-3144 | www.maurycarter.com



OSCEOLA COUNTY ACREAGE

10± acres
St. Cloud, FL

**UNDER
CONTRACT**



REGIONAL MAP

— Commercial Real Estate Investments | Management | Brokerage | Development | Land

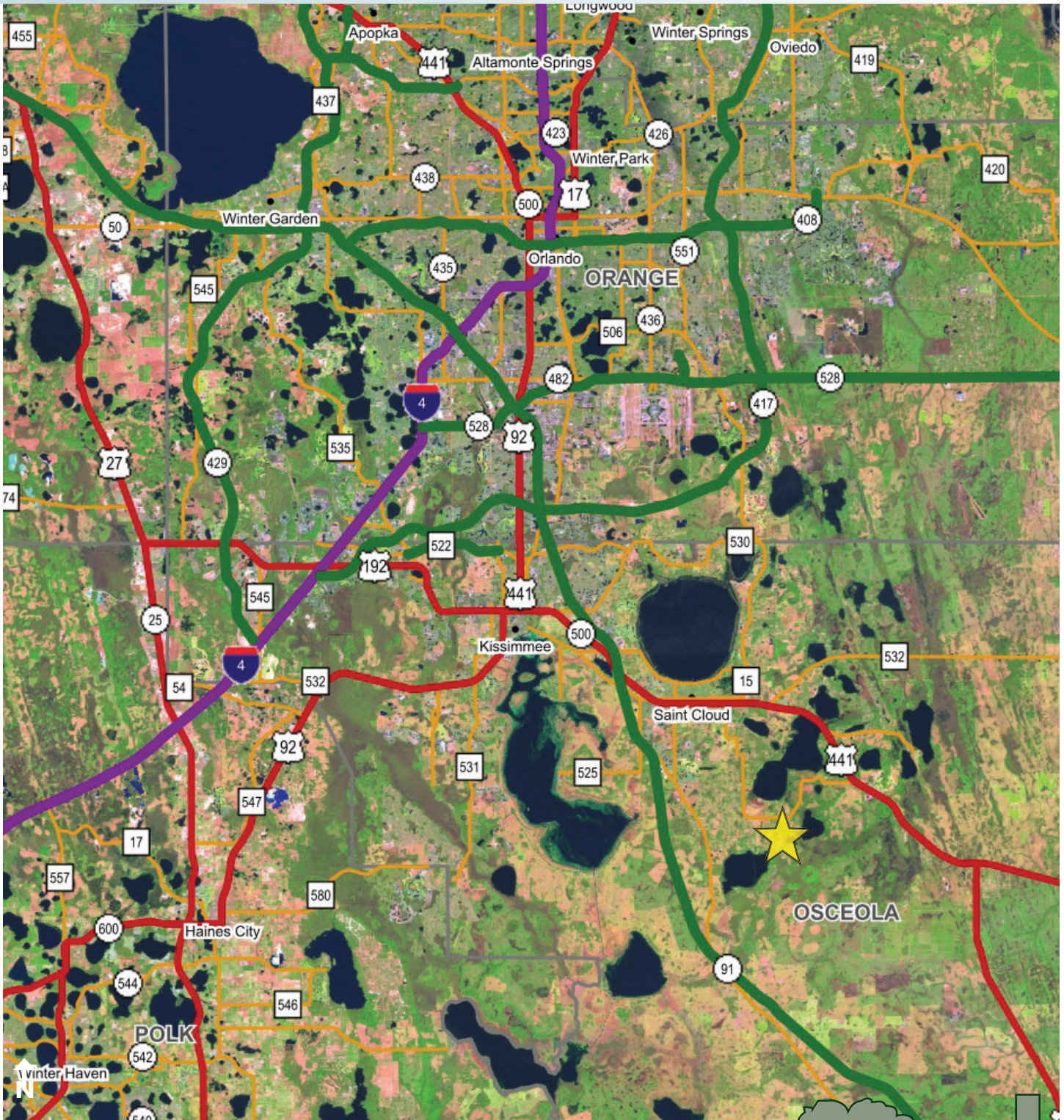
Maury L. Carter & Associates, Inc.
407-422-3144 | www.maurycarter.com



OSCEOLA COUNTY ACREAGE

10± acres
St. Cloud, FL

**UNDER
CONTRACT**



LOCATION MAP

— Commercial Real Estate Investments | Management | Brokerage | Development | Land

Maury L. Carter & Associates, Inc.
407-422-3144 | www.maurycarter.com

