



Wildlife Solutions, Inc.

250 S. School Street

Fairhope, AL 36532

251-591-2682

jmccool@bellsouth.net

September 4, 2020

William Sanders

Re: Wetland Determination

At your request, our staff biologist inspected your approximately 26-acre property just south of I-65 (corner of Hwy 287 and Louis Road) for the presence of jurisdictional wetlands as defined by the U.S. Army Corps of Engineers. After performing a detailed field survey, it was determined that hydric soils, hydrophytic vegetation and hydrology indicators are on the property in the form of a man-made pond – most likely NRCS cattle pond from 1960's or earlier.

This man-made wetland is jurisdictionally isolated and not regulated by USACE.

Please bear in mind that jurisdictional wetlands (protected) are located just off the northeast property corner. Should there be any construction on the property, extra care should be taken to prevent erosion/sedimentation off the property in this area.

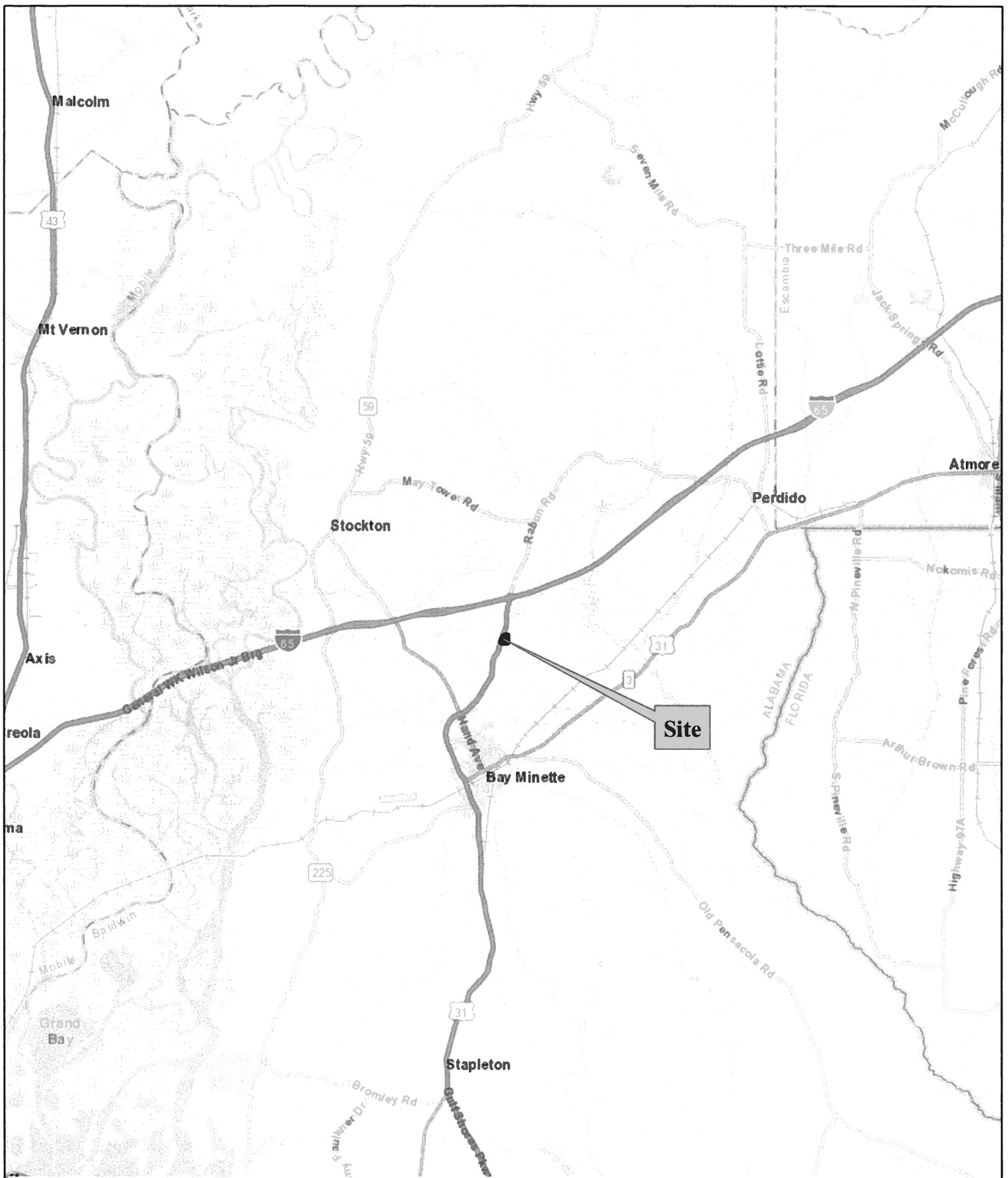
Attached are maps of the property for your reference.

Please do not hesitate to give me a call should you have any questions or concerns.

Best regards,

JJ McCool

Forester/Wildlife Biologist



Miles

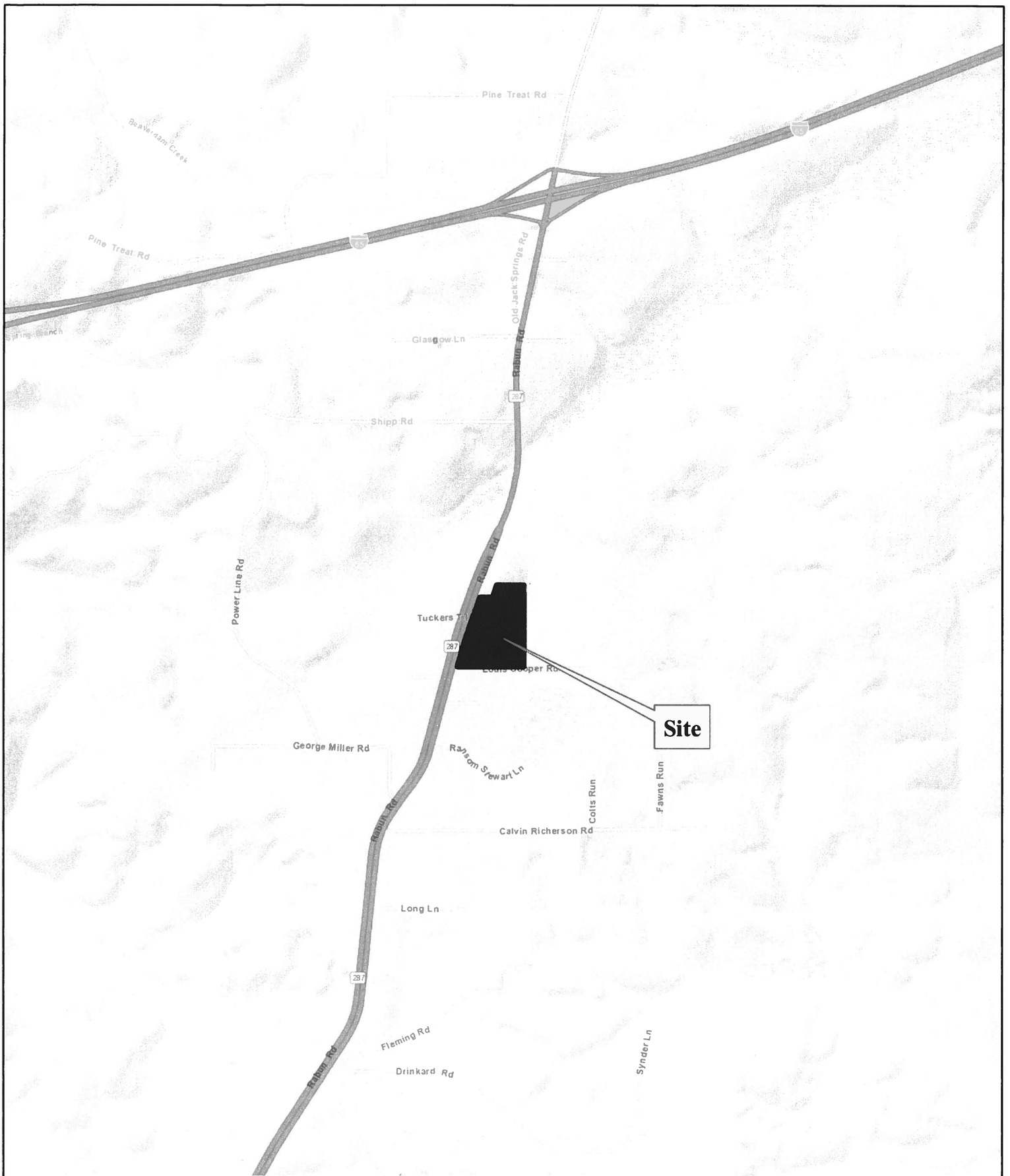
1 inch = 20,833 feet

Wildlife Solutions, Inc.

Phone: 251-591-2682

-87.761579 30.944803 Decimal Degrees





0 0.1 0.2 0.4 0.6 0.8
Miles

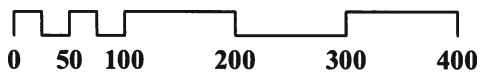
1 inch = 2,000 feet

Wildlife Solutions, Inc.

Phone: 251-591-2682

-87.761579 30.944803 Decimal Degrees





Feet

1 inch = 167 feet

Wildlife Solutions, Inc.

Phone: 251-591-2682

-87.761579 30.944803 Decimal Degrees



