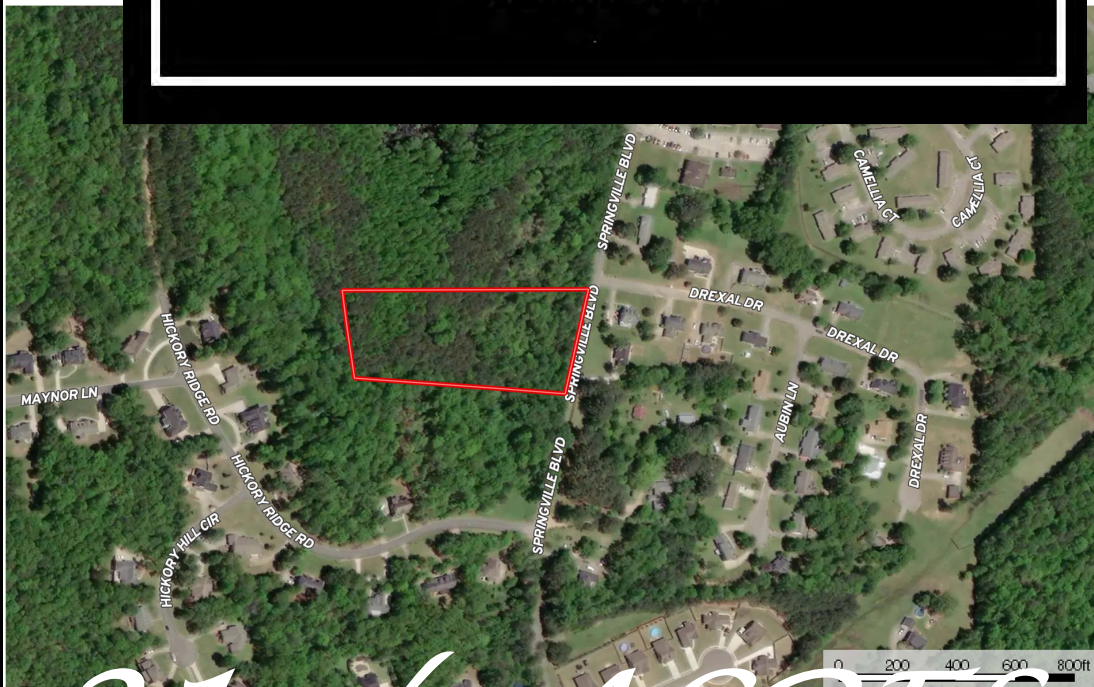




Alabama**Land**Agent.com

Land • Farms • Lake Property

Chad Camp
205-478-4974



Oneonta, AL ~ GPS 33.93185, -86.47210

Chad Camp
(205) 478-4974

4 Acre Wooded Homesite in Oneonta, Alabama. Property would be good for a Basement Home. Just around corner from Hickory Ridge Subdivision. Convenient to Hwy 231 and Downtown Oneonta.

Directions: From I-59. North on Hwy 231. Left on Chamption and Right on Hudson. Left on Springville Blvd. Property on the Right.



Alabama**Land**Agent.com

Land • Farms • Lake Property



