

WEST ONA ACREAGE

ONA, FL | HARDEE COUNTY

98 ± AC





SPECIFICATIONS & FEATURES

Acreage: 98 ± AC

Sale Price: \$660,000

Site Address: 840 CR 665, Ona, FL 33865

County: Hardee

Road Frontage: 1,634 ± FT on CR 665

Predominant Soil Types: Holopaw, Basinger, Smyrna, and Wauchula sands

Uplands/Wetlands:

- 48.9 ± AC wetlands
- 49.1 ± AC uplands

Grass Types: Bahia and other native grasses

Irrigation/Well: One 4" well with pump at barn

Water Source: Well with power

Conservation Easement: None

Structures: Two pole barns

Current Use: Cattle

Taxes: \$307.14 (2020)

Fencing: Barbed wire fenced and crossed fenced

West Ona Acreage is in Hardee county and is an excellent retreat just minutes from I-75. Currently used as a commercial cattle operation, the property is an ideal place for hunting deer, turkey, and hogs. Additional recreational activities include fishing, bird watching, and camping. Power is available to the well and barns, making it easy to build a home or weekend cabin. This beautiful property has mature oaks, pines, palmettos, and other native species. Schedule a showing time to visit the property.

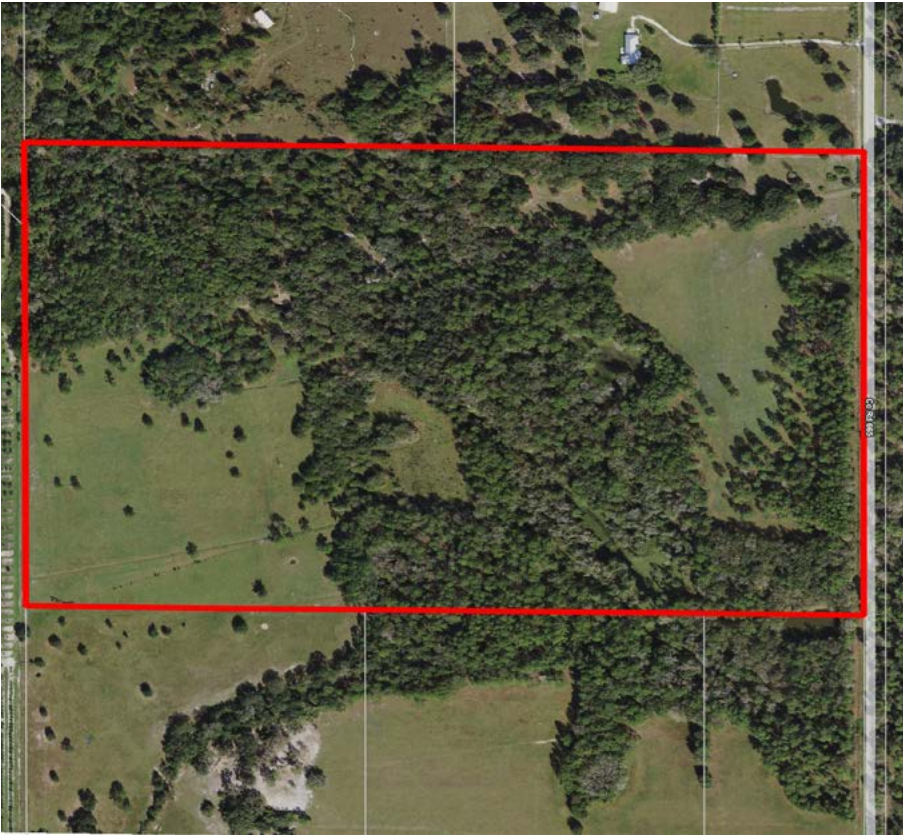
Potential Recreational Uses:

- Hunting for deer, turkey, hogs, and other small game
- Fishing, bird watching, camping, and other outdoor activities

Game Populations: Abundant deer and turkey population

Infrastructure: Water and power

Land Cover: Bahia and native grasses along with mature oaks, pines, palmettos, and other native species



LOCATION & DRIVING DIRECTIONS

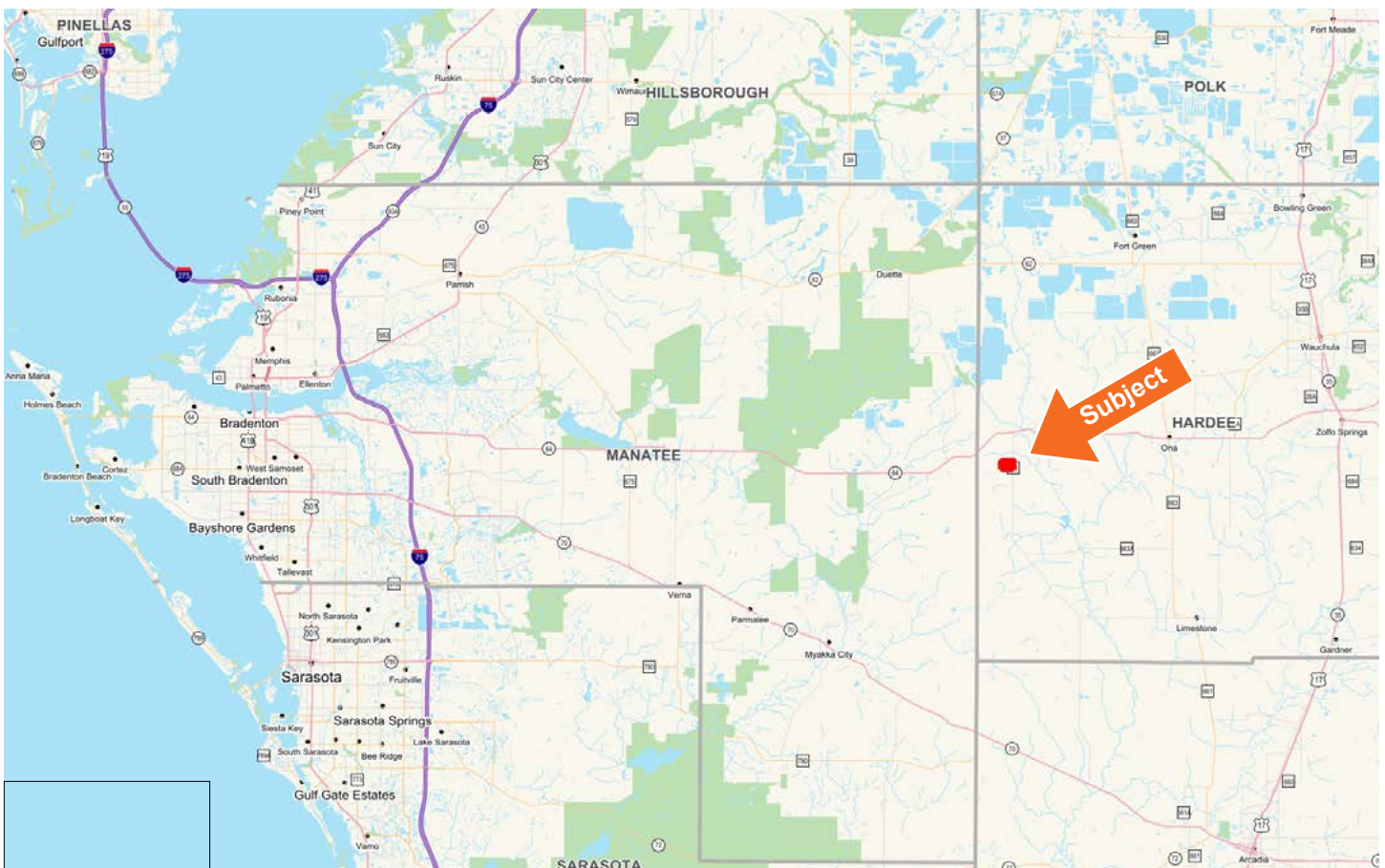
Parcel IDs: 05-35-23-0000-03780-0000

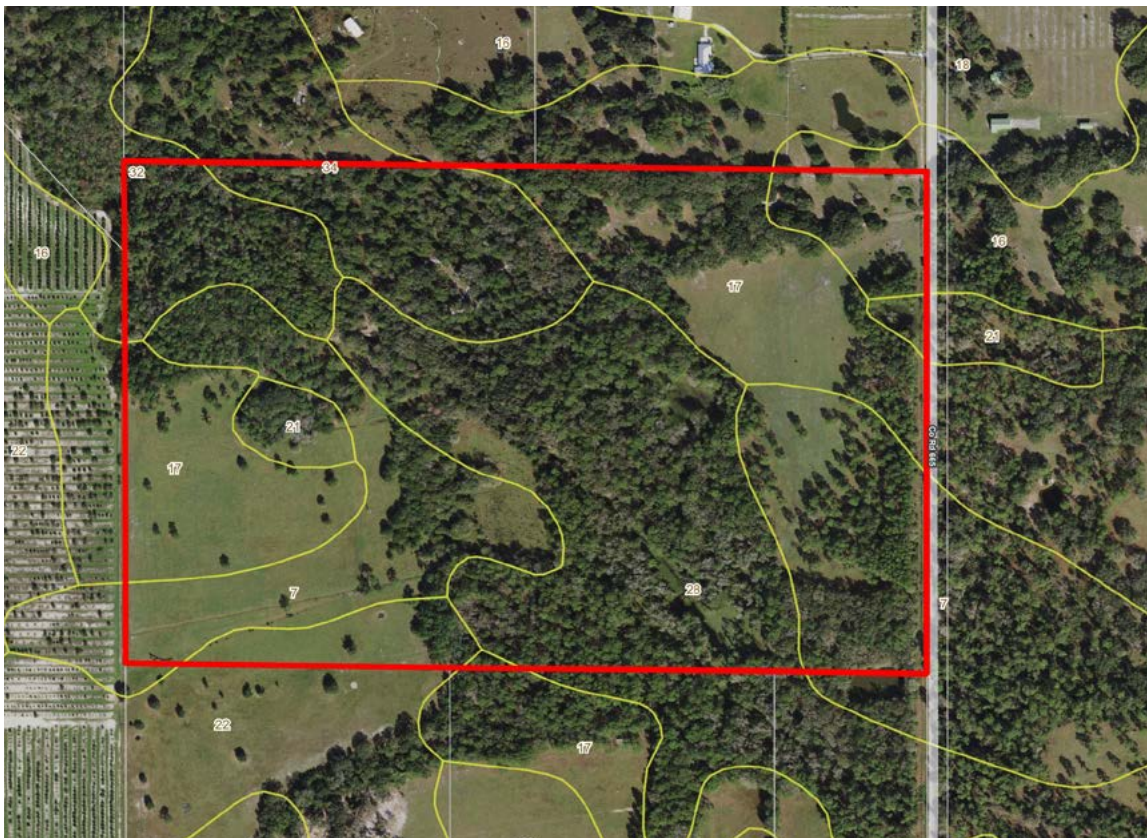
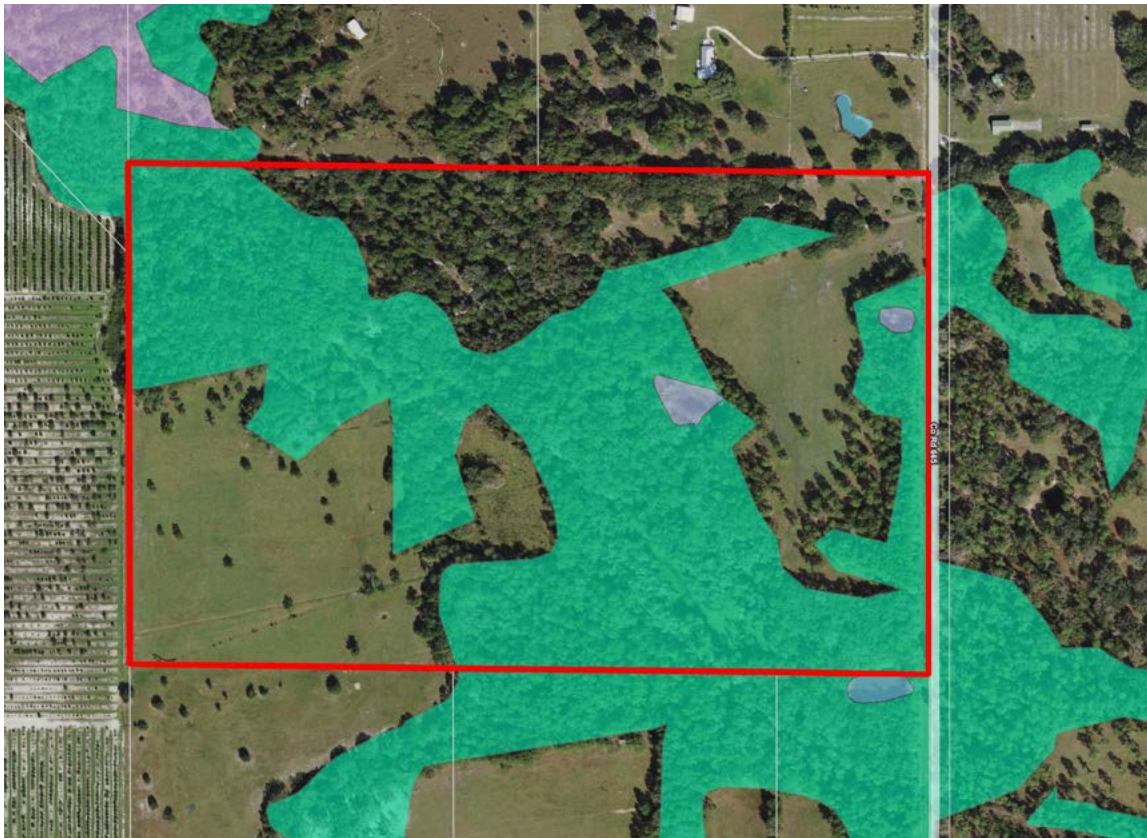
GPS Location: -82.03017, 27.46610

Driving Directions:

- From Zolfo Springs take HWY 64 to CR665
- Turn South on CR665 in 1.5 miles
- Property is on the West side of CR665

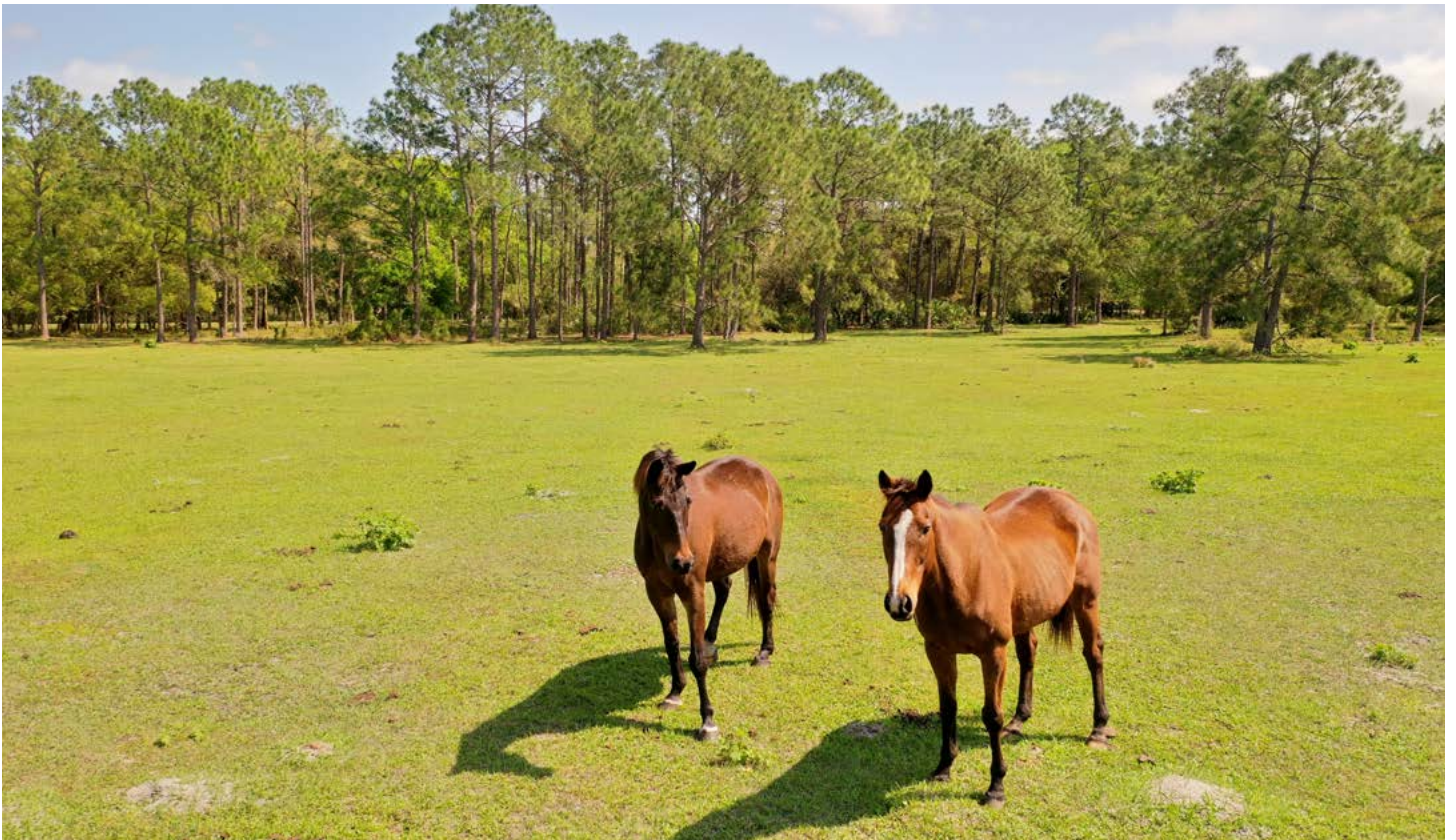
Showing Instructions: Contact the listing advisor, Daniel Lanier, 863.698.2971.













1723 Bartow Rd | Lakeland, Florida 33801

98 ± AC • Excellent retreat just minutes from I-75

Ideal place for hunting deer, turkey, and hogs

Power is available to the well and barns, making it easy to build a home or weekend cabin

Visit SVNsaunders.com and search for: **West Ona**

Daniel Lanier, 863.698.2971 | daniel.lanier@svn.com



HEADQUARTERS

1723 Bartow Rd
Lakeland, Florida 33801
863.648.1528

NORTH FLORIDA

356 NW Lake City Ave
Lake City, Florida 32055
386.438.5896

GEORGIA

125 N Broad Street, Suite 210
Thomasville, Georgia 31792
229.299.8600

©2021 SVN | Saunders Ralston Dantzler Real Estate.
All SVN® Offices Independently Owned and Operated

SVN | Saunders Ralston Dantzler Real Estate is a full-service land and commercial real estate brokerage with over \$3 billion in transactions representing buyers, sellers, investors, institutions, and landowners since 1996. We are recognized nationally as an authority on all types of land, including agriculture, ranch, recreation, residential development, and international properties. Our commercial real estate services include marketing, property management, leasing and tenant representation, valuation, business brokerage, and advisory and counseling services for office, retail, industrial, and multi-family properties. Our firm also features an auction company, forestry division, international partnerships, hunting lease management, and extensive expertise in conservation easements. Located at the center of Florida's I-4 corridor, we provide proven leadership and collaborative expertise backed by the strength of the SVN® global platform. To learn more, visit SVNsaunders.com.



030321-A