

Engineer's Note:-
• P.M. Deeds Permanent Reference Monument set.
All corner radii are 25 ft unless otherwise indicated.
Dimensions are to P.C. and P.T. of curves at block corners.
Bearings shown refer to an assumed meridian.
There is a 75 ft utility easement at the rear of all lots.

SUNN LAKES ESTATES

SECTION 18

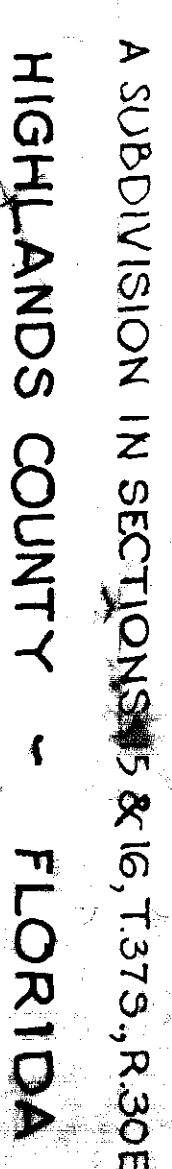
A SUBDIVISION IN SECTIONS 15 & 16, T37S, R30E,
HIGHLANDS COUNTY - FLORIDA

M. GARRIS
MIAAMI, FLORIDA
CIVIL AND CONSULTING ENGR.
NOVEMBER, 1966

SCALE IN FEET
0 50 100 150 200 250 300 350 400
1" = 100'

ESTATES SECTION 18 SHEET No 2



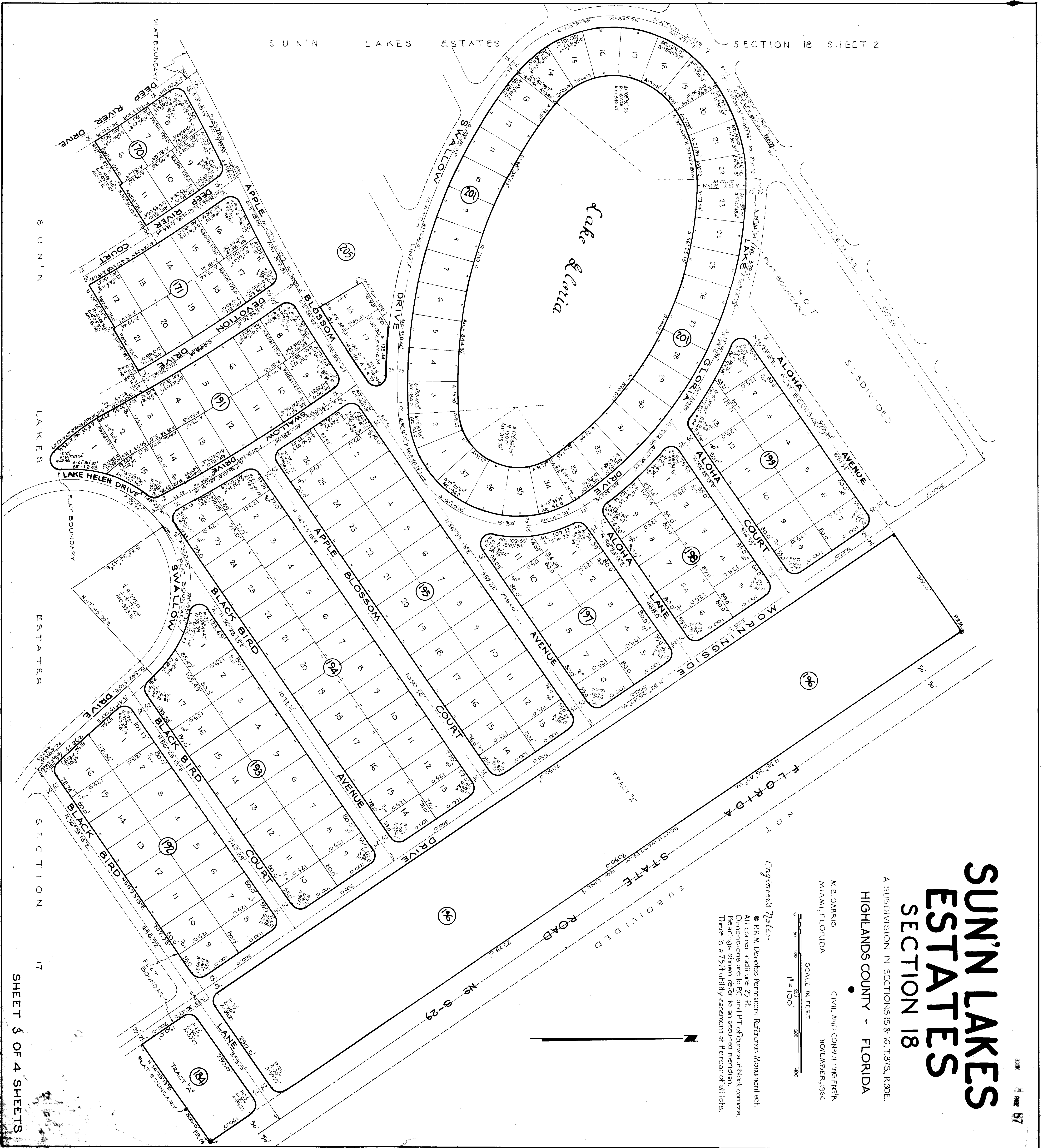


SECTION 18

M.B.GARRIS
MIAMI, FLORIDA

CIVIL AND CONSULTING ENGINEER
NOVEMBER 1966

SHEET 2 OF 4 SHEETS



SUNN LAKES ESTATES SECTION 18

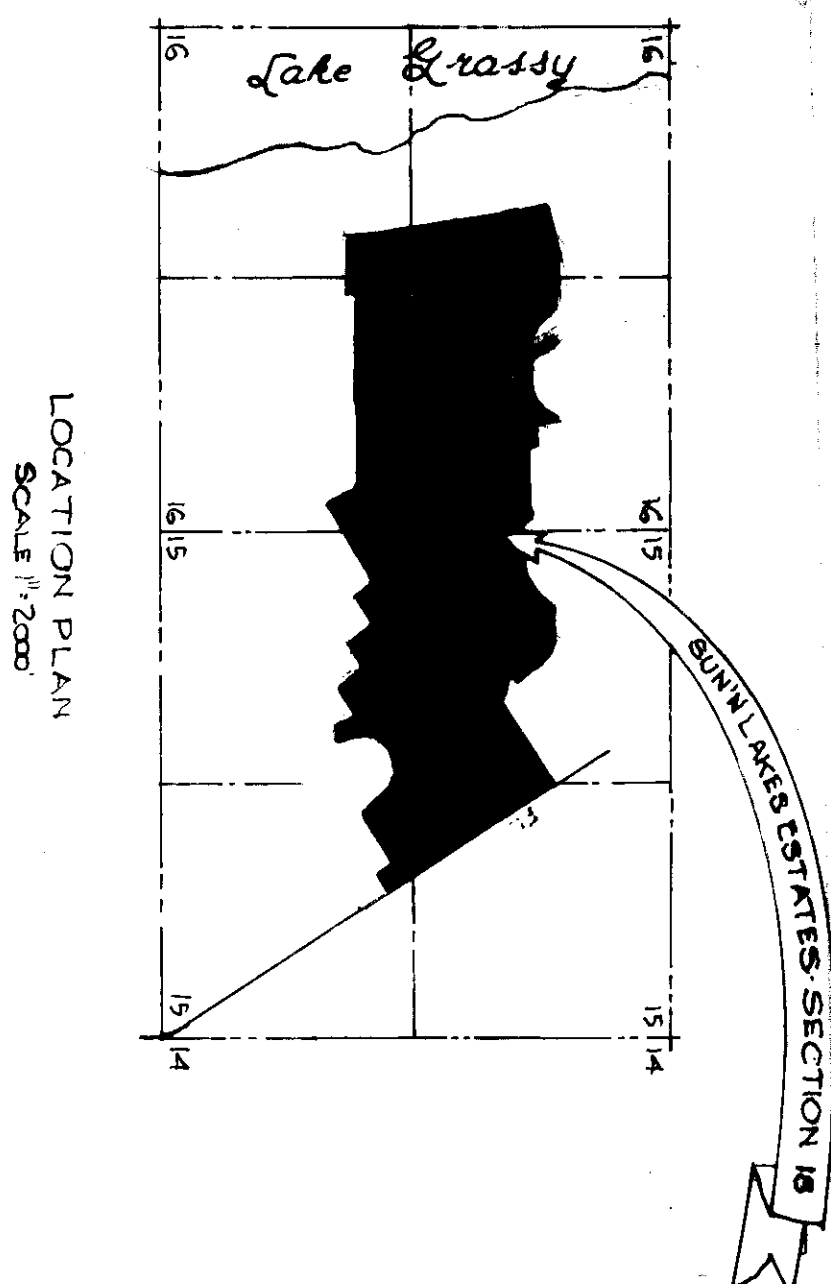
A SUBDIVISION IN SECTIONS 15 & 16, T. 37S, R. 30E.
HIGHLANDS COUNTY - FLORIDA

M. B. GARRIS
CIVIL AND CONSULTING ENGR.
MIAMI, FLORIDA
NOVEMBER, 1966

SCALE IN FEET
0 50 100 150 200 250 300 350 400
1" = 100'

Engineer's Note:-

© P.M. Deane's Permanent Reference Monument set.
All corner nails are 25 ft.
Dimensions are to P.C. and P.T. of curves at block corners.
Bearings shown refer to an assumed meridian.
There is a 1/2" utility easement at the corner of all lots.



SUNN LAKES ESTATES

SECTION 16

A SUBDIVISION OF SECTIONS 15 & 16, TOWNSHIP 37 SOUTH, RANGE 30 EAST
HIGHLANDS COUNTY, FLORIDA

M. B. GARRIS
MIAMI, FLORIDA

CIVIL & CONSULTING ENGINEER
NOVEMBER, 1966

234650

FILED NOV. 21 1966
HIGHLANDS COUNTY, FLORIDA

BOOK 8 PAGE 87

KNOW ALL MEN BY THESE PRESENTS:

That HIGHLANDS COUNTY TITLE AND GUARANTY LAND CO., a Florida corporation, has caused to be made the attached plat of "SUNN LAKES ESTATES - SECTION 16", the same being a subdivision of a portion of Fractional Section 16 and a portion of Section 15, all lying and being in Township 37 South, Range 30 East, Highlands County, Florida, more particularly described as follows:

Commence at the Southwest corner of the Southeast quarter (SE 1/4) of Fractional Section 16, Township 37 South, Range 30 East, Highlands County, Florida, the same being also the Northwest corner of Lot 1, Block 42, of SUNN LAKES ESTATES - SECTION 16, plat Book 8, page 10 of the Public Records of Highlands County, Florida, and a point on a circular curve whose center bears North 89 degrees 58 minutes 41 seconds West from said point, being also on the production Westerly of the South line of the Southeast quarter of the said Fractional Section 16, a central angle of 21 degrees and Northwesterly along said circular curve to the left, having a radius of 680.0 feet, through a central angle of 21 degrees 23 minutes for an arc distance of 693.25 feet to the end of said curve; thence North 71 degrees 23 minutes 41 seconds West, tangent to the last described curve, for a distance of 580.0 feet to the beginning of a tangential circular curve, thence Northwesterly along said circular curve to the right, having a radius of 1,993.0 feet, through a central angle of 18 degrees 15 minutes for an arc distance of 634.82 feet to the end of said curve; thence North 3 degrees 08 minutes 41 seconds West, tangent to the last described curve, for a distance of 33.86 feet to the point of beginning of the parcel of land herein described; thence North 86 degrees 51 minutes 19 seconds East for a distance of 641.0 feet; thence North 3 degrees 08 minutes 41 seconds West for a distance of 9.12 feet; thence South 89 degrees 58 minutes 41 seconds East for a distance of 1,992.09 feet to a point on a circular curve whose center bears North 55 degrees 28 minutes 41 seconds East from said point; thence Southwesterly along said circular curve to the left, having a radius of 3,325.0 feet, through a central angle of 5 degrees 45 minutes 45 seconds for an arc distance of 321.82 feet; thence North 49 degrees 23 minutes 00 seconds East for a distance of 900.04 feet to a point on a circular curve whose center bears North 49 degrees 58 minutes 41 seconds East from said point; thence Southwesterly along said circular curve to the left, having a radius of 2,425.0 feet, through a central angle of 00 degrees 53 minutes 26 seconds for an arc distance of 250 feet to a point of reverse curve; thence South easterly along said circular curve to the right, having a radius of 5,353.308 feet, through a central angle of 4 degrees 29 minutes 59 seconds for a distance of 416.07 feet to a point on a circular curve whose center bears North 28 degrees 49 minutes 49 seconds West from said point; thence Northwesterly along said circular curve to the left, having a radius of 6,175.0 feet, through a central angle of 2 degrees 47 minutes 51 seconds for an arc distance of 301.52 feet to a point of reverse curve; thence Northwesterly along said circular curve to the right, having a radius of 5,073.0 feet, through a central angle of 3 degrees 26 minutes 15 seconds for an arc distance of 301.62 feet to a point on a circular curve whose center bears South 54 degrees 30 minutes 03 seconds West from said point; thence Southwesterly along said circular curve to the right, having a radius of 5,723.308 feet, through a central angle of 1 degree 57 degrees 30 minutes 25 seconds East for a distance of 125.0 feet to a point on a circular curve whose center bears South 57 degrees 30 minutes 25 seconds West from said point; thence Southwesterly along said circular curve to the right, having a radius of 6,048.308 feet, through a central angle of 00 degrees 09 minutes 22 seconds for an arc distance of 9.46 feet; thence North 57 degrees 35 minutes 47 seconds East for a distance of 175.0 feet to a point on a circular curve whose center bears South 57 degrees 35 minutes 47 seconds West from said point; thence South easterly along said circular curve to the right, having a radius of 6,123.308 feet, through a central angle of 1 degree 49 minutes 03 seconds for an arc distance of 197.42 feet; thence North 59 degrees 24 minutes 51 seconds East for a distance of 125.0 feet to a point on a circular curve South 59 degrees 24 minutes 51 seconds West from said point; thence Southwesterly along said circular curve to the right, having a radius of 6,348.308 feet, through a central angle of 00 degrees 03 minutes 37 seconds for an arc distance of 6.68 feet; thence North 59 degrees 28 minutes 28 seconds East for a distance of 175.0 feet to a point on a circular curve whose center bears South 59 degrees 28 minutes 28 seconds West from said point; thence Southwesterly along said circular curve to the right, having a radius of 6,523.308 feet, through a central angle of 00 degrees 21 minutes 14.5 seconds for an arc distance of 40.31 feet to the end of said curve; thence South 30 degrees 10 minutes 17 seconds East for a distance of 82.33 feet to the beginning of a tangential circular curve; thence Southwesterly along said circular curve to the left, having a radius of 808.69 feet, through a central angle of 11 degrees 24 minutes 48.5 seconds for an arc distance of 161.09 feet to a point of compound curve; thence Southwesterly easterly and Northwesterly along said circular curve to the left, having a radius of 29.0 feet through a central angle of 143 degrees 09 minutes 24 seconds for an arc distance of 61.46 feet to a point of reverse curve; thence Northwesterly Northwesterly, Easterly and Southwesterly along said circular curve to the right, having a radius of 300.0 feet, through a central angle of 143 degrees 29 minutes 30 seconds for an arc distance of 751.32 feet to the end of said curve; thence South 4 degrees 15 minutes 00 seconds East for a distance of 298.75 feet to the beginning of a tangential circular curve; thence South easterly along said circular curve to the left, having a radius of 390.0 feet, through a central angle of 6 degrees 33 minutes 09 seconds for an arc distance of 84.60 feet; thence North 56 degrees 23 minutes 13 seconds East for a distance of 702.73 feet; thence South 53 degrees 36 minutes 41 seconds East for a distance of 200.0 feet; thence North 56 degrees 23 minutes 13 seconds East for a distance of 300.0 feet to the Southwesterly right-of-way line of Florida State Road M-S-29; thence North 33 degrees 36 minutes 41 seconds West along the Southwesterly right-of-way line of Florida State Road M-S-29, for a distance of 2,215.0 feet; thence South 56 degrees 23 minutes 13 seconds West for a distance of 995.54 feet to a point on a circular curve whose center bears South 19 degrees 04 minutes 54 seconds West from said point; thence Northwesterly along said circular curve to the left, having a radius of 990.0 feet, through a central angle of 19 degrees 04 minutes 54 seconds for an arc distance of 323.71 feet to a point of compound curve; thence West and Southwesterly along said circular curve to the left, having a radius of 487.94 feet, through a central angle of 30 degrees 34 minutes 03 seconds for an arc distance of 760.33 feet to a point on a circular curve whose center bears North 30 degrees 34 minutes 03 seconds West from said point; thence Northwesterly along said circular curve to the left, having a radius of 3,800 feet, through a central angle of 3 degrees 02 minutes 34 seconds for an arc distance of 201.99 feet to the end of said curve; thence North 56 degrees 23 minutes 13 seconds East for a distance of 52.24 feet; thence North 33 degrees 36 minutes 41 seconds West for a distance of 311.0 feet to the beginning of a tangential circular curve; thence Northwesterly along said circular curve to the left, having a radius of 157.345 feet, through a central angle of 56 degrees 05 minutes for an arc distance of 154.06 feet to the end of said curve; thence North 81 degrees 41 minutes 18 seconds West for a distance of 398.13 feet to a point on a circular curve whose center bears North 63 degrees 33 minutes 33 seconds West from said point; thence Southwesterly and Westwesterly along said circular curve to the right, having a radius of 623.0 feet, through a central angle of 63 degrees 35 minutes 33 seconds for an arc distance of 693.68 feet to the end of said curve; thence due West for a distance of 150.0 feet to the beginning of a tangential circular curve; thence Northwesterly along said circular curve to the right, having a radius of 600.0 feet, through a central angle of 23 degrees 57 minutes 56 seconds for an arc distance of 200.37 feet; thence North 89 degrees 49 minutes 41 seconds West for a distance of 1,221.98 feet; thence due North for a distance of 91.7 feet; thence due West for a distance of 150.0 feet; thence due South for a distance of 270.0 feet; thence

the West for a distance of 150.0 feet; thence due North for a distance of 349.49 feet to a point on a circular curve whose center bears North 58 degrees 59 minutes 50 seconds West from said point; thence Southerly and Southwesterly along said circular curve to the right, having a radius of 350.0 feet, through a central angle of 88 degrees 59 minutes 50 seconds for an arc distance of 360.59 feet to the end of said curve; thence due West for a distance of 300.0 feet; thence North 55 degrees 09 minutes 00 seconds for a distance of 281.23 feet to the beginning of a tangential circular curve; thence Northwesterly along said circular curve to the left, having a radius of 200.0 feet, through a central angle of 34 degrees 51 minutes 00 seconds for an arc distance of 121.65 feet to a point of reverse curve; thence Northwesterly along said circular curve to the right, having a radius of 300.0 feet, through a central angle of 48 degrees 11 minutes 23 seconds for an arc distance of 293.32 feet; thence due West for a distance of 418.55 feet; thence South 68 degrees 15 minutes 00 seconds West for a distance of 641.0 feet to a point on a circular curve whose center bears South 68 degrees 15 minutes 00 seconds West from said point; thence Southwesterly along said circular curve to the right, having a radius of 4702.0 feet, through a central angle of 18 degrees 36 minutes 19 seconds for an arc distance of 1,526.85 feet to the end of said curve; thence South 3 degrees 08 minutes 41 seconds East for a distance of 983.0 feet to the point of beginning.

That the Boulevard, Avenues, Drives, Lanes, Courts and Terraces as shown on the attached plat together with all existing and future planting, trees and shrubbery thereon, are hereby dedicated to the particular use of the public for proper purposes, reserving to ourselves, our successors or assigns, the reversion or reversions thereof whenever discontinued by law.

IN WITNESS WHEREOF, HIGHLANDS COUNTY TITLE AND GUARANTY LAND CO. has caused these presents to be signed in its corporate name by its President and its corporate seal to be hereunto affixed and attested by its Secretary this _____ day of November, 1966.

Witness my hand and notarial seal at Miami, Florida, this 14th day of November, 1966

STATE OF FLORIDA, S.S.
I HEREBY CERTIFY that on this day personally appeared before me Leo N. Weiser and Ivan J. Goch, known well and known to be the persons described in and who executed the foregoing instrument and who acknowledged the execution thereof to be their free and voluntary act and deed as such officers of said corporation and that they affixed the official seal of said corporation by and with the authority of the Board of Directors and that the same is the free act and deed of said corporation and for the purposes therein mentioned.

Witness my hand and notarial seal at Miami, Florida, this 14th day of November, 1966

Approved: Leo N. Weiser County Surveyor, Highlands County, Florida

Approved: Ivan J. Goch County Attorney, Highlands County, Florida

STATE OF FLORIDA, S.S.
This is to certify that the Board of County Commissioners of Highlands County, Florida, has officially approved the attached plat on this 14th day of November, 1966.

Attest: Paul H. Hulse Clerk of the Circuit Court, Signed Paul H. Hulse Chairman of the Board

STATE OF FLORIDA, S.S.
I HEREBY CERTIFY that the attached plat entitled "SUNN LAKES ESTATES, SECTION 16", comprising three sheets, numbered consecutively is a true and correct representation of a recent survey made and plotted under my direction. Also that permanent reference monuments were set as indicated in accordance with Section 17, Chapter 10275 (1925) Laws of the State of Florida

M. B. GARRIS by M. B. Garriss Wilson B. Garriss, Reg. Civil Engineer, Reg. Land Surveyor, State of Florida

Witness my hand and official seal at Sebring, Highlands County, Florida, this 18th day of November, 1966

Approved: Paul H. Hulse Clerk of the Circuit Court.