

VIEW ONLINE 

colliers.com/USA1083994

# ±75 Acres for Sale

## Highway 321, Winnsboro | South Carolina

Located just north of the town of Winnsboro, the property is comprised of approximately 75 acres of mature planted pines with Moore Creek running through portions of the tract. The tract is an ideal home site, timber investment or recreational tract.

### FEATURES

- Potential, immediate income
- Large adjacent land owners
- Great whitetail tract with Moore Creek as an excellent water source
- Ample road frontage along Highway 321
- Nice hardwood bottom along Moore Creek
- 5 minutes from Winnsboro, SC
- 40 minutes from Columbia, SC
- 60 minutes from Charlotte, NC

Price reduced:

~~\$288,000~~ \$255,000

### Contact:

Ryan McCue

Brokerage Associate

+1 803 401 4273

ryan.mccue@colliers.com

Colliers

Colliers

1301 Gervais Street | Suite 600

Columbia, SC 29201

P: +1 803 254 2300

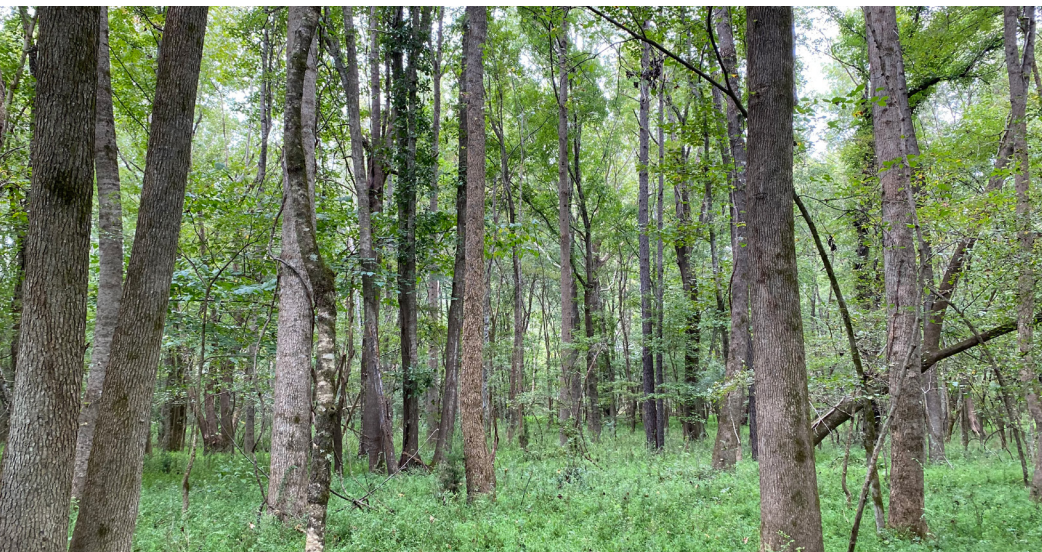
www.colliers.com

This document has been prepared by Colliers International for advertising and general information only. Colliers International makes no guarantees, representations or warranties of any kind, expressed or implied, regarding the information including, but not limited to, warranties of content, accuracy and reliability. Any interested party should undertake their own inquiries as to the accuracy of the information. Colliers International excludes unequivocally all inferred or implied terms, conditions and warranties arising out of this document and excludes all liability for loss and damages arising there from. This publication is the copyrighted property of Colliers International and/or its licensor(s). ©2021. All rights reserved.













VIEW ONLINE 

[colliers.com/USA1083994](https://colliers.com/USA1083994)

Ryan McCue  
Brokerage Associate  
+1 803 401 4273  
[ryan.mccue@colliers.com](mailto:ryan.mccue@colliers.com)



Colliers  
1301 Gervais Street | Suite 600  
Columbia, SC 29201  
P: +1 803 254 2300  
[www.colliers.com](http://www.colliers.com)

Accelerating success.