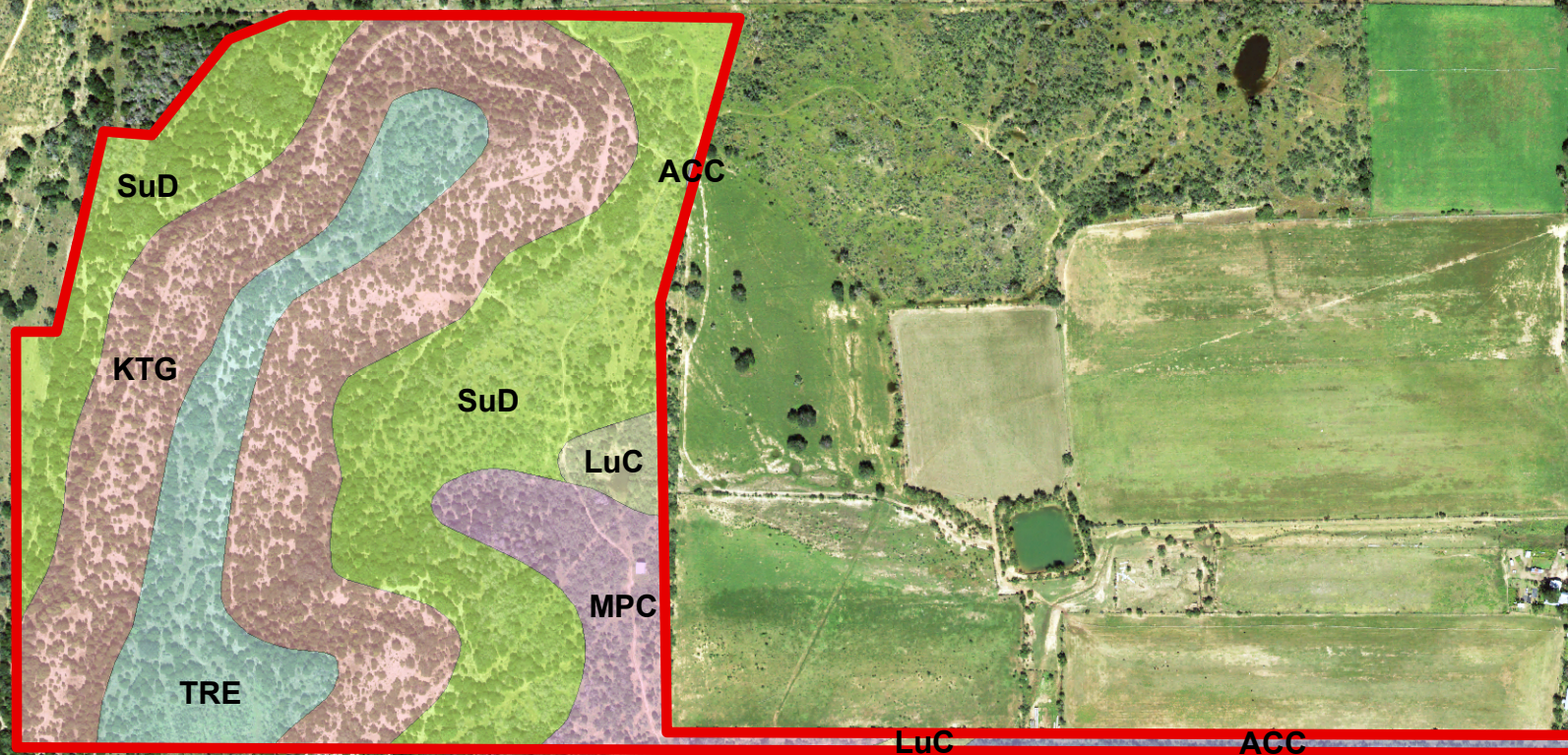


TURKEY HILL RANCH - SOILS



SOILS

- AAC - Acove-Campair-Loneoak complex, 0 to 5 percent slopes
- KTG - Kerrville, Brackett, and Tarrant soils, 12 to 40 percent slopes, very rocky
- LuC - Luckenbach clay loam, 0 to 5 percent slopes
- MPC - Menard-Pedernales complex, 0 to 5 percent slopes
- SuD - Sunev clay loam, 1 to 8 percent slopes
- TRE - Tarrant-Rock outcrop complex, 1 to 12 percent slopes



1 inch = 700 feet

0 315 630 Feet

ACCURACY OF MAPS NOT GUARANTEED

© 2020 Culver/LANDTX Inc. All Rights Reserved

Mason County - ~145ac.

LANDTX

www.landtx.com 325.294.4616