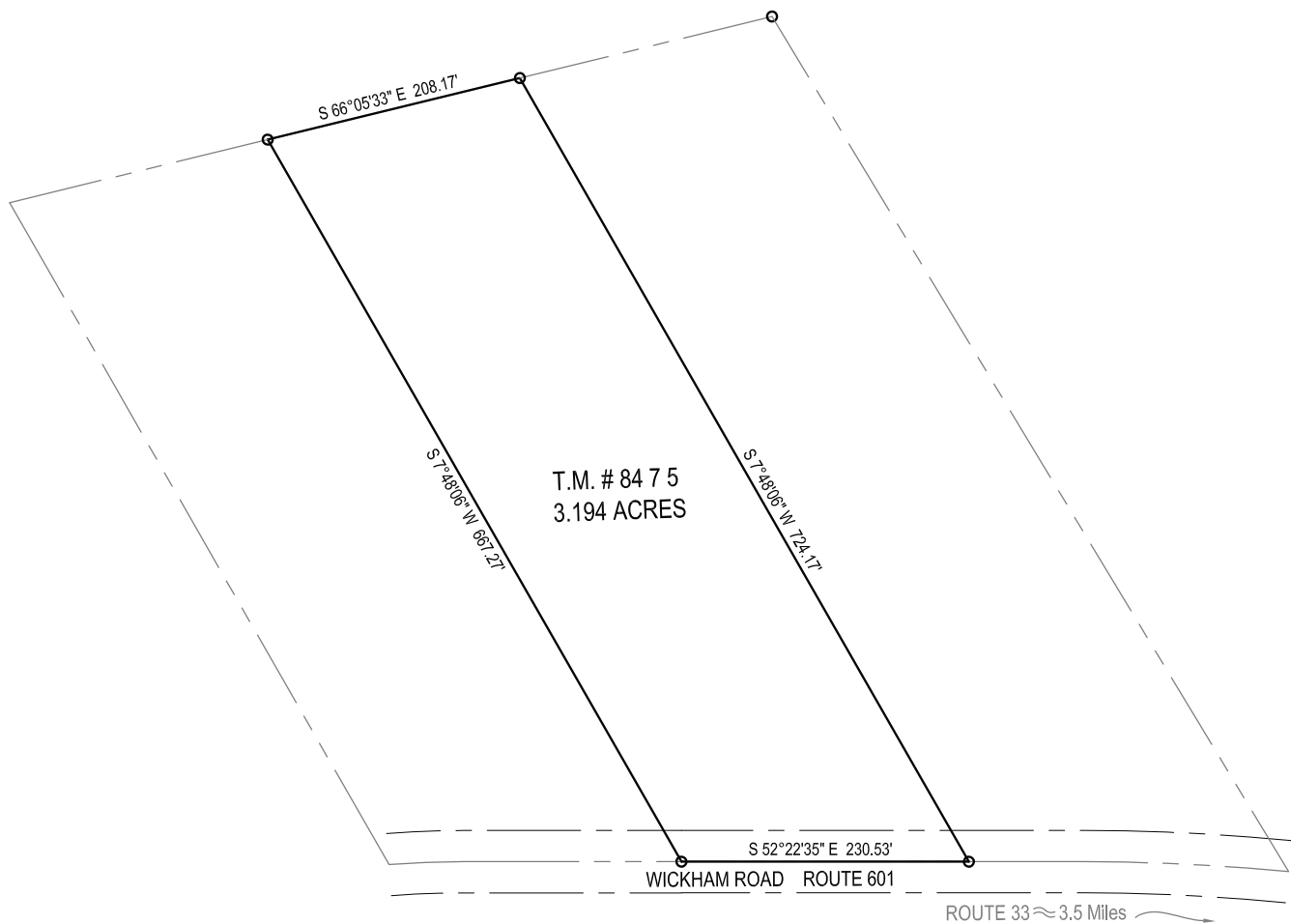


WICKHAM ROAD

\$49,900

OWNER FINANCING AVAILABLE



- Flat, Wooded Acreage
- Great Building Site
- Louisa County, Virginia
- Three Bedroom Perk
- No Covenants
- Taxes - \$0.72 per \$100 of Assessed Value

OFFERED BY COUNTRYSIDE LAND COMPANY LC

540.886.6155 | virginialanddirect.com | land@countrysideinc.biz