

BUCKINGHAM

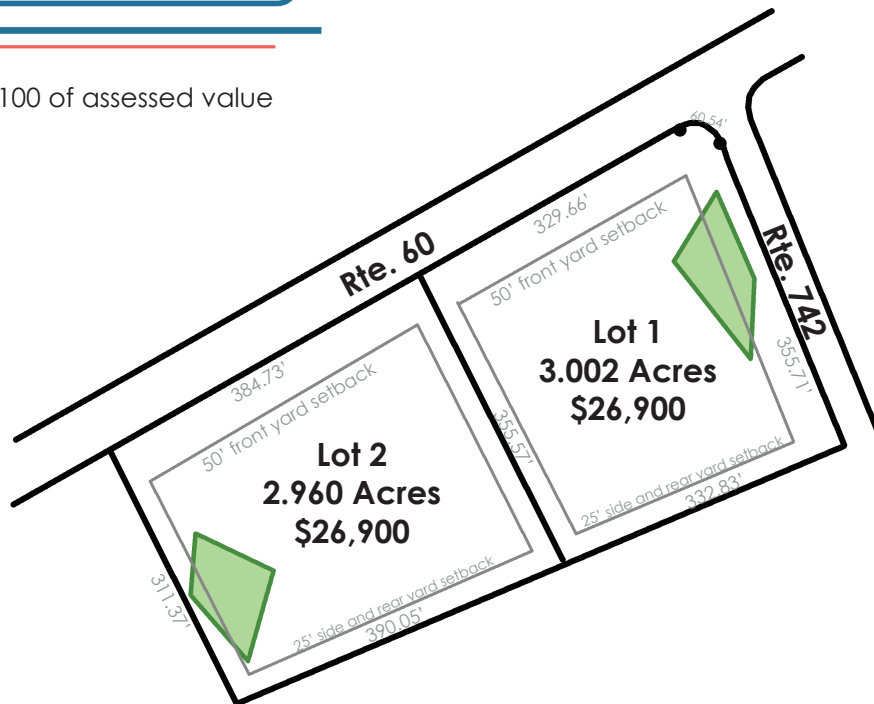
County



UNRESTRICTED!



Tax Rate: 50¢ per \$100 of assessed value



Countryside

(540) 886-6155
homes@countrysideinc.biz
28 Imperial Dr. Staunton, VA



facebook.com/countrysidehomes

VirginiaHomesDirect.com
VirginiaLandDirect.com

Proudly offered by Countryside Land Company LC



Alternative septic systems approved for 3-bedroom homes. Installation is the responsibility of the purchaser.
Prices subject to change. Revised 4/8/2021.