

106 Crestview Cir, Louisburg, KS 66053-4087, Miami County

POPULATION

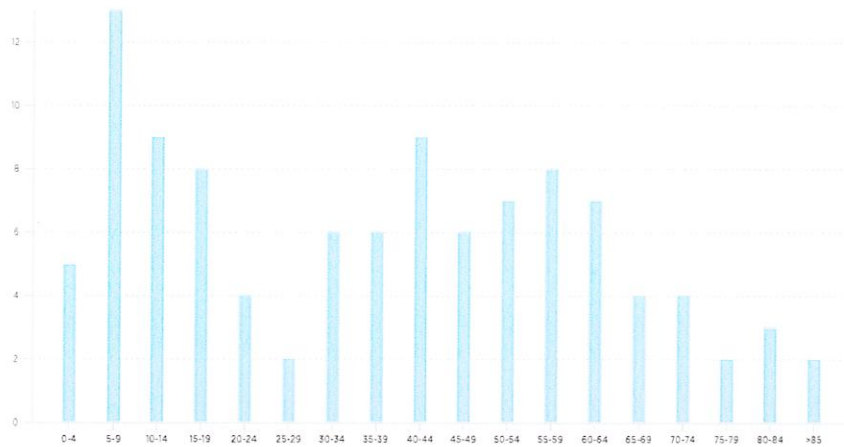
SUMMARY

Estimated Population	7,416
Population Growth (since 2010)	-1.8%
Population Density (ppl / mile)	74
Median Age	41.6

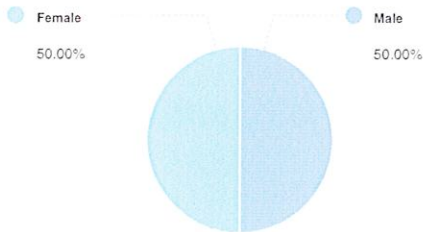
HOUSEHOLD

Number of Households	2,779
Household Size (ppl)	3
Households w/ Children	2,058

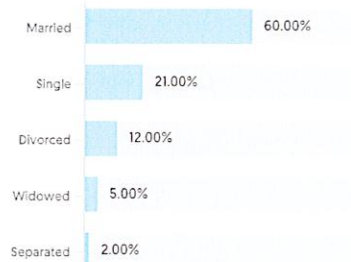
AGE



GENDER



MARITAL STATUS



HOUSING

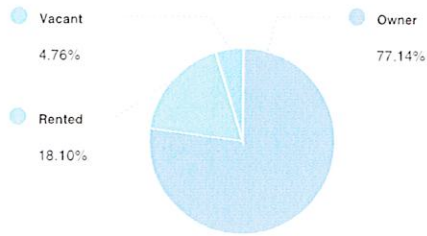
SUMMARY

Median Home Sale Price	\$211,900
Median Dwelling Age	1992 years

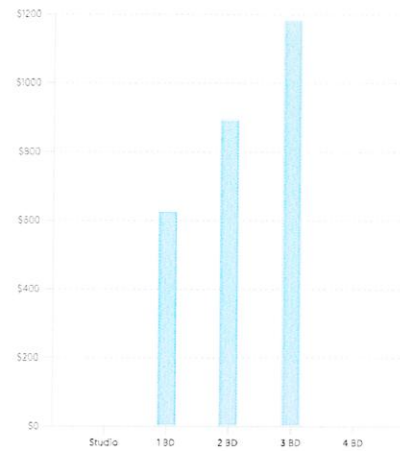
STABILITY

Annual Residential Turnover	8.61%
-----------------------------	-------

OCCUPANCY



FAIR MARKET RENTS (COUNTY)

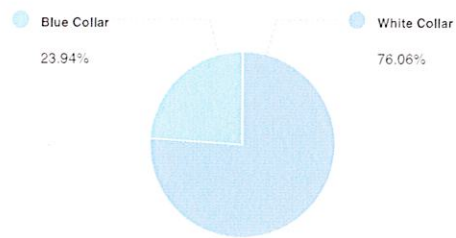


QUALITY OF LIFE

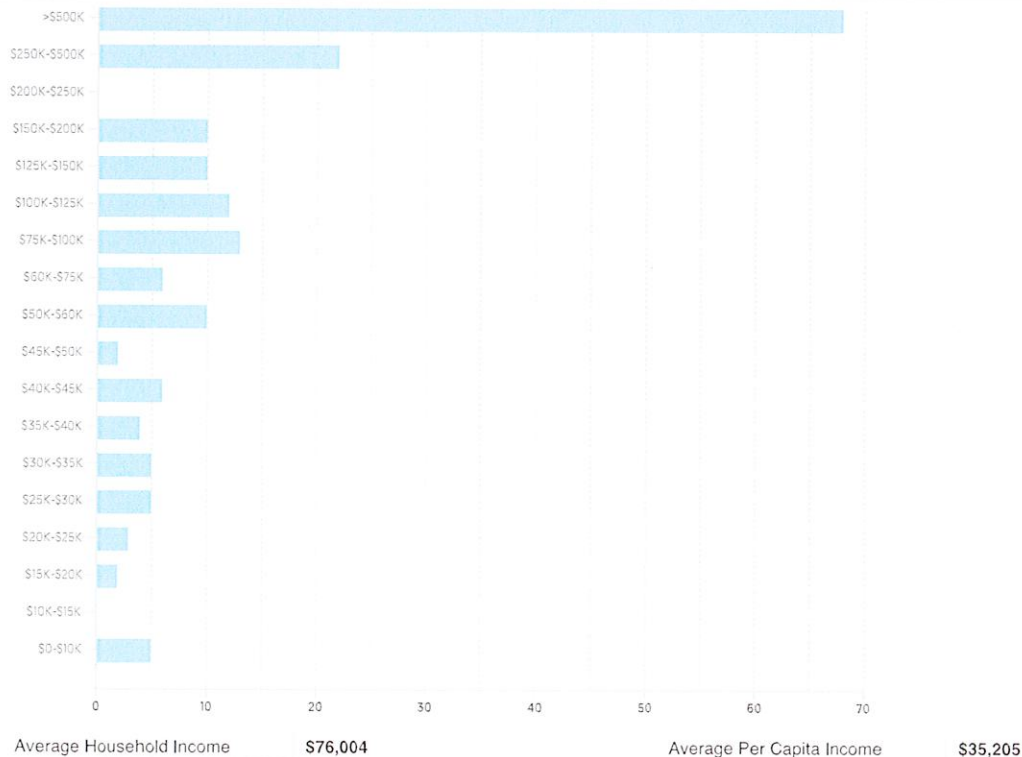
WORKERS BY INDUSTRY

Agricultural, Forestry, Fishing	211
Construction	477
Manufacturing	176
Transportation and Communications	176
Wholesale Trade	172
Retail Trade	461
Finance, Insurance and Real Estate	197
Services	1,208
Public Administration	71

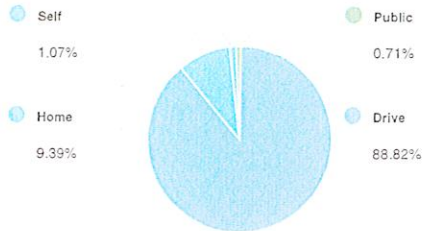
WORKFORCE



HOUSEHOLD INCOME



COMMUTE METHOD



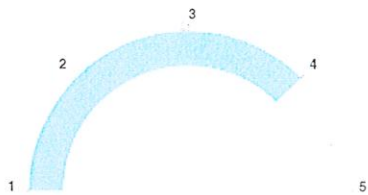
Median Travel Time **27 min**

WEATHER

January High Temp (avg °F)	39.5
January Low Temp (avg °F)	19
July High Temp (avg °F)	88.6
July Low Temp (avg °F)	68.7
Annual Precipitation (inches)	42.37

EDUCATION

EDUCATIONAL CLIMATE INDEX (1)



HIGHEST LEVEL ATTAINED

Less than 9th grade	72
Some High School	203
High School Graduate	1,183
Some College	1,342
Associate Degree	579
Bachelor's Degree	1,582
Graduate Degree	612

(1) This measure of socioeconomic status helps identify ZIP codes with the best conditions for quality schools. It is based on the U.S. Census Bureau's Socioeconomic Status (SES) measure with weights adjusted to more strongly reflect the educational aspect of social status (education 2:1 to income & occupation). Factors in this measure are income, educational achievement and occupation of persons within the ZIP code. Since this measure is based on the population of an entire ZIP code, it may not reflect the nature of an individual school.

(2) Powered by Liveby. Information is deemed reliable but not guaranteed. Copyright © 2021 Liveby. All rights reserved.