

HIGHLANDS PARK

SECTION 1

SHEET 7 OF 59

**A SUBDIVISION OF PORTIONS OF
SECTIONS 19 & 20, TWP. 36 S., RGE. 30 E
HIGHLANDS COUNTY, FLORIDA**

KNOW ALL MEN THESE PRESENTS, THAT THE "HIGHLANDS PARKS, INC.", A FORTUNA CORPORATION, HAS CAUSED TO BE MADE THE ATTACHED PLAT ENTITLED "HIGHLANDS PARK, SECTION 27," THE SAME BEING A SUBDIVISION OF PORTIONS OF SECTIONS 18 AND 20, TOWNSHIP 38 NORTH, RANGE 30 EAST, HIGHLAND COUNTY, FLORIDA, AND MORE PARTICULARLY DESCRIBED AS FOLLOWS: BEGINNING AT THE CORNER OF SECTIONS 18-20-20 AND 20-20-20 TOWNSHIP 38 NORTH, RANGE 30 EAST, LAND OFFICER PUBLIC AS MAP MAKER, THE NENCE 18.970' 00" ALONG THE SOUTH LINE OF SECTION 20, A DISTANCE OF 738.11' 00" ALONG THE WEST LINE OF THE CENTER LINE OF STACHEMORE STREET, THENCE N 01° 13' 00" E ALONG THE CENTER LINE OF STACHEMORE STREET A DISTANCE OF 454.83' 00" ALONG THE WEST LINE OF THE CENTER LINE OF STACHEMORE STREET A DISTANCE OF 558.21' 00" ALONG THE WEST LINE OF THE CENTER LINE OF WILLIAMS STREET, THENCE S 88° 40' 00" E ALONG THE CENTER LINE OF WILLIAMS STREET A DISTANCE OF 196.82' 00" TO THE INTERSECTION WITH THE CENTER LINE OF REYNOLDS AVENUE, THENCE S 88° 40' 00" E ALONG THE CENTER LINE OF REYNOLDS AVENUE A DISTANCE OF 240.00' 00" TO ITS INTERSECTION WITH THE CENTER LINE OF A REYNOLDS STREET, THENCE S 88° 40' 00" E ALONG THE CENTER LINE OF REYNOLDS STREET A DISTANCE OF 240.00' 00" TO ITS INTERSECTION WITH THE SOUTH LINE OF LINCOLN BOULEVARD, THENCE S 89° 44' 00" E ALONG THE SOUTH LINE OF LINCOLN BOULEVARD A DISTANCE OF 134.00' 00" TO ITS INTERSECTION WITH THE EAST 1/2 W/4 LINE OF THE C.C. L. BULLARD TRACTS S 7° 33' 00" W ALONG THE SOUTH LINE OF THE C.C. L. BULLARD A DISTANCE OF 403.60' 00" TO ITS POINT OF CURVATURE, THENCE ALONG THE CURVED EAST 1/2 W/4 LINE OF THE A.C. L. BULLARD THE LONG CHORD OF WHICH BEING S 9° 30' W A DISTANCE OF 446.82' 00" TO ITS INTERSECTION WITH THE SOUTH LINE OF SECTION 19 TOWNSHIP 38 NORTH, RANGE 30 EAST, THENCE S 89° 38' 00" E ALONG THE SOUTH LINE OF SAID SECTION 19 A DISTANCE OF 35.14' 00" TO THE G.L. BRYAN AS MAP MAKER, THE CORNER OF SECTIONS 18-20-20 AND 20, THE POINT OF BEGINNING, ALL LIVING IN SECTIONS 18 AND 20, TOWNSHIP 38 NORTH, RANGE 30 EAST, HIGHLAND COUNTY, FLORIDA.

[illegible]

STATE OF NEW YORK I HEREBY CERTIFY THAT ON THIS DAY PERSONALLY APPEARED BEFORE ME, THE UNDERSIGNED AUTHORITY, EVA R. TULLOCH, COUNTY CLERK OF NEW YORK COUNTY, PRESIDENT AND PAUL FISCHER, SECRETARY, OF HIGHLANDS LAGOONING, INC., ONE WELL KNOWN TO BE THE PERSONS DESCRIBED IN AND WHO EXECUTED THE FOREGOING INSTRUMENT AND WHO ACKNOWLEDGED THE SAME TO BE THEIR FREE AND VOLUNTARY ACT AS SUCH OFFICERS OF SAID CORPORATION FOR THE USES AND PURPOSES HEREIN EXPRESSED, THAT THEY AFFIXED THERE TO THE ORIGINAL SEAL OF SAID CORPORATION ALL BY AND WITH THE AUTHORITY OF THE BOARD OF DIRECTORS OF SAID CORPORATION AND THAT SAID INSTRUMENT IS THE FREE ACT OF SAID CORPORATION.

WITNESS MY HAND AND OFFICIAL SEAL THIS 16th DAY OF November, 1980 - 14

I HEREBY CERTIFY THAT THE ATTACHED PLAT ENTITLED "HIGHLANDS PARK SECTION 17," IS A REPRESENTATION OF LAND RECENTLY ACQUIRED BY ME AND MY PARTNERSHIP FROM THE STATE OF LOUISIANA, IN ACCORDANCE WITH SECTION 10(C) ARTICLES 832(2)(B), LAWS OF THE STATE OF LOUISIANA, PLATED BY ME AND THAT IT IS TRUE AND CORRECT TO THE BEST OF MY KNOWLEDGE AND BELIEF. ALSO THAT THE REMAINDER REFERENCE HEREIN TO BE PLATED BY ME ON THE 12TH DAY OF JANUARY, A.D. 1960.

Paul M. Nease
NOTARY PUBLIC, STATE OF NEW YORK
JAN 12 1960

THIS PLAN WAS APPROVED AND ACCEPTED BY RESOLUTION PASSED AND ADOPTED BY THE BOARD OF COUNTY COMMISSIONERS OF HIGHLANDS COUNTY, FLORIDA, THIS 10 DAY OF April, A. D. 19 61

ATTEST CLERK OF THE COUNTY COURT

Robert R. Goshorn
ROBERT R. GOSHORN - REGISTERED FLORIDA LAND SURVEYOR

Barbara H. Swank
BARBARA H. SWANK - CHAIRMAN OF THE BOARD

1. DEPT. 1000
 CLERK OF THE CIRCUIT COURT OF HIGHLANDS COUNTY, FLORIDA, DO HEREBY CERTIFY THAT I HAVE EXAMINED THE PLAT AND THE TITLE IT COMPLETES IN FORM AND WITH THE REQUIREMENTS OF THE LAWS OF THE STATE OF FLORIDA REGULATING THE MAKING OF SURVEYS AND PLATTING FOR RECORD OF MAPS AND PLATS, AND HAVE THIS DAY FILED SAME FOR RECORD IN BOOK 7 OF PLATS, PAGE 579 ✓

WITNESSEY HAND AND OFFICIAL SEAL AT STERLING, HIGHLANDS COUNTY, FLORIDA, THIS 11 DAY OF April, A.D. 19 87

CLERK OF THE CIRCUIT COURT

By: [Signature]
DEPUTY CLERK

1

Approved by
R. P. Mundy, Jr.
Secy. Treas. Officers

January 20th
Dear George

SCALE IN FEET

100 50 0 100 200 300

SCALE 1" = 100'

DISTANCES ON CORNER LOTS ARE TO INTERSECTION OF BLOCK LINES EXTENDED UNLESS OTHERWISE INDICATED.
ALL RADII ARE 25 FEET UNLESS OTHERWISE INDICATED
● INDICATES PERMANENT REFERENCE MONUMENTS.

FILE
61
EAR
HOLDS
POGA

15 16 17

20

LOCATION MAP TWP. 36 S. RGE. 30 E.

HIGHLAND LAKE

Maritime easement, 3.5' of 20' side

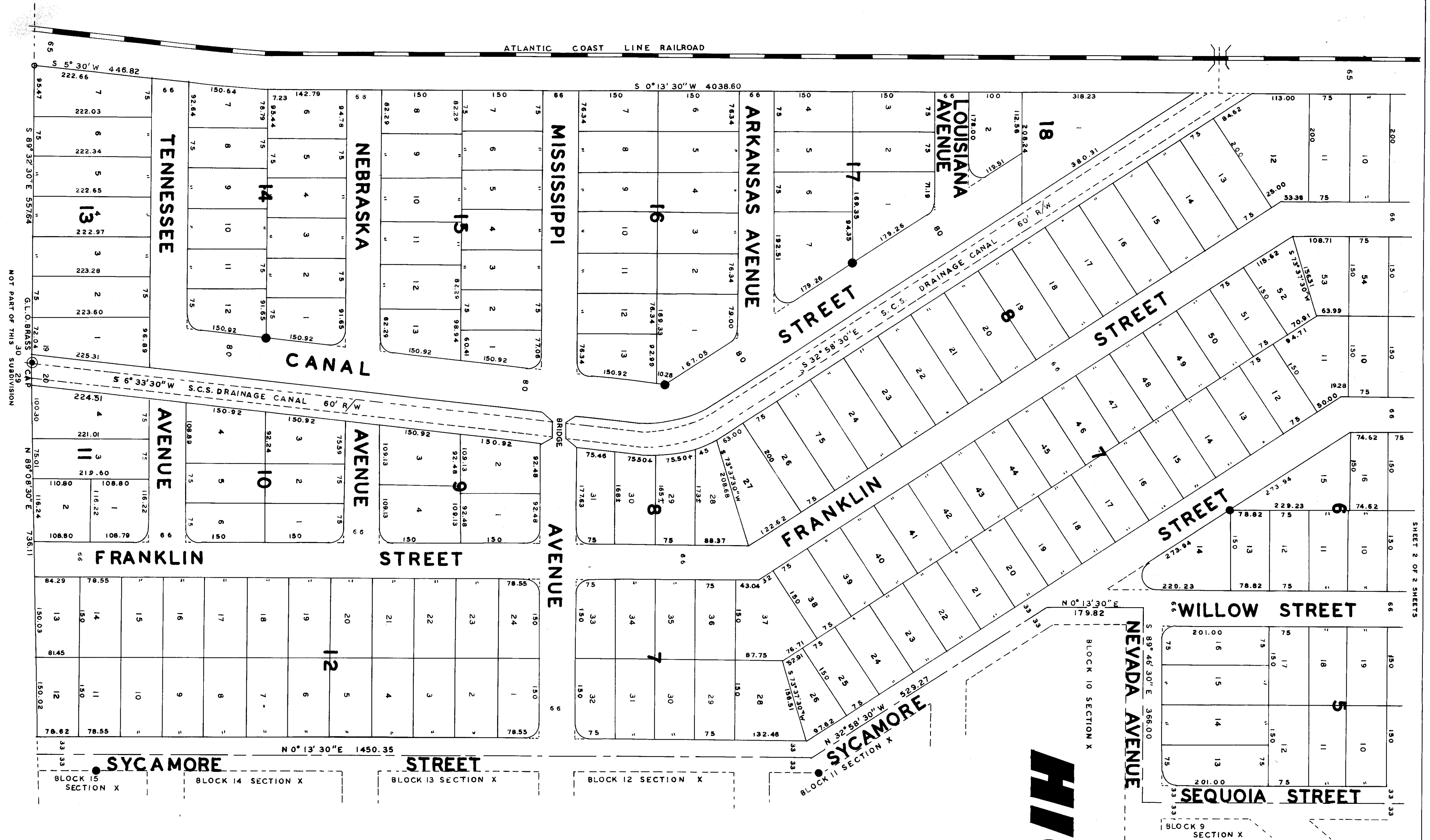
ROBERT R. GOSHORN
LAND SURVEYORS

*illucate Road. Pt of Canal
Street door 78. BK 401 PG 357*

for the easement on every
block, let per DR BK 900 pg 513

| LAKE PLACID, FLA. | | | | | |
|-----------------------------------|-------------------------------|---------------------------------|---------------------|------------------|--|
| | | SCALE "S = 100' | | | |
| DATE NOV 1939 | SURVEYED BY <i>W.H. Jones</i> | DRAWN BY <i>J.H. Jones</i> | CITY OF LAKE PLACID | STATE OF FLORIDA | |
| APPROVED <i>Robert R. Goshorn</i> | | ROBERT R. GOSHORN REG. NO. 1247 | | | |

1



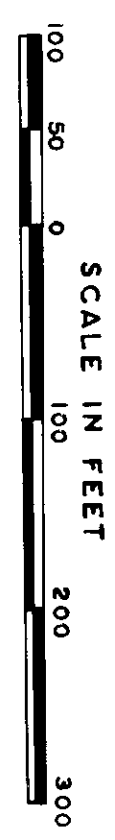
HIGHLANDS PARK SECTION 1

A SUBDIVISION OF PORTIONS OF
SECTIONS 19 & 20, TWP. 36 S., RGE. 30 E.,
HIGHLANDS COUNTY, FLORIDA

ROBERT R. GOSHORN
LAND SURVEYORS
LAKE PLACID, FLA.

DATE: NOV. 1958
SCALE: 1"=100'
SURVEYED BY: [Signature]
DRAWN BY: [Signature]
APPROVED: [Signature]
ROBERT R. GOSHORN, REG. 1247

ENGINEER'S NOTE:
DISTANCES ON CORNER LOTS ARE TO INTERSECTION OF BLOCK
LINES EXCEPT WHERE SHOWN OTHERWISE.
ALL MONUMENTS 25 FEET UNLESS OTHERWISE INDICATED.
● INDICATES PERMANENT REFERENCE MONUMENTS.



Approved: [Signature]
By: [Signature]
[Signature]