



Buffalo Flats

+/-72.32 Acres



Located in west central Edwards county
EASY EASY EASY access, less than .2 of a mile off a WELL maintained county road
and only five 5 miles from blacktop. Accessible by car
16x32 new cabin with electricity and plumbing in place. Small porch
Private water well and electricity
Gentle rolling to level terrain, abundant topsoil with minimal rock
Small wet weather creek sweeps through the middle of ranch
and a hill along the east side of the ranch
Moderate to heavy vegetative cover perfect for wildlife habitat
2 very nice blinds and feeders with feeder pens
Earthen tank that can be converted to a pond
Game includes whitetail, turkey, hogs, axis, aoudad and many other native species
Ag Exempt taxes
\$259,000 listing #91

Western Hill Country Realty

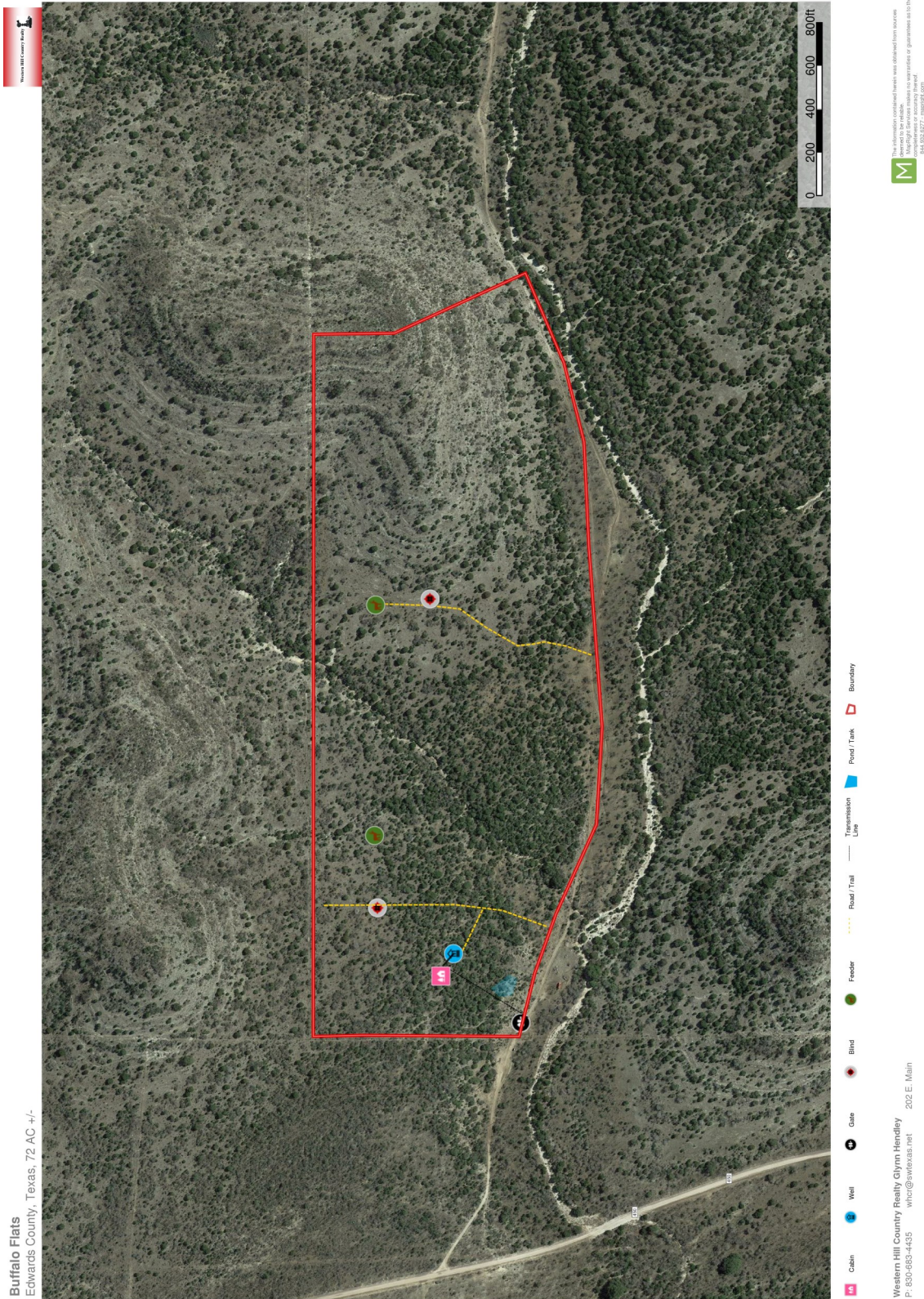
www.westernhillcountryrealty.com

info@westernhillcountryrealty.com

830-683-4435



Buffalo Flats +/-72.32 Acres



Western Hill Country Realty

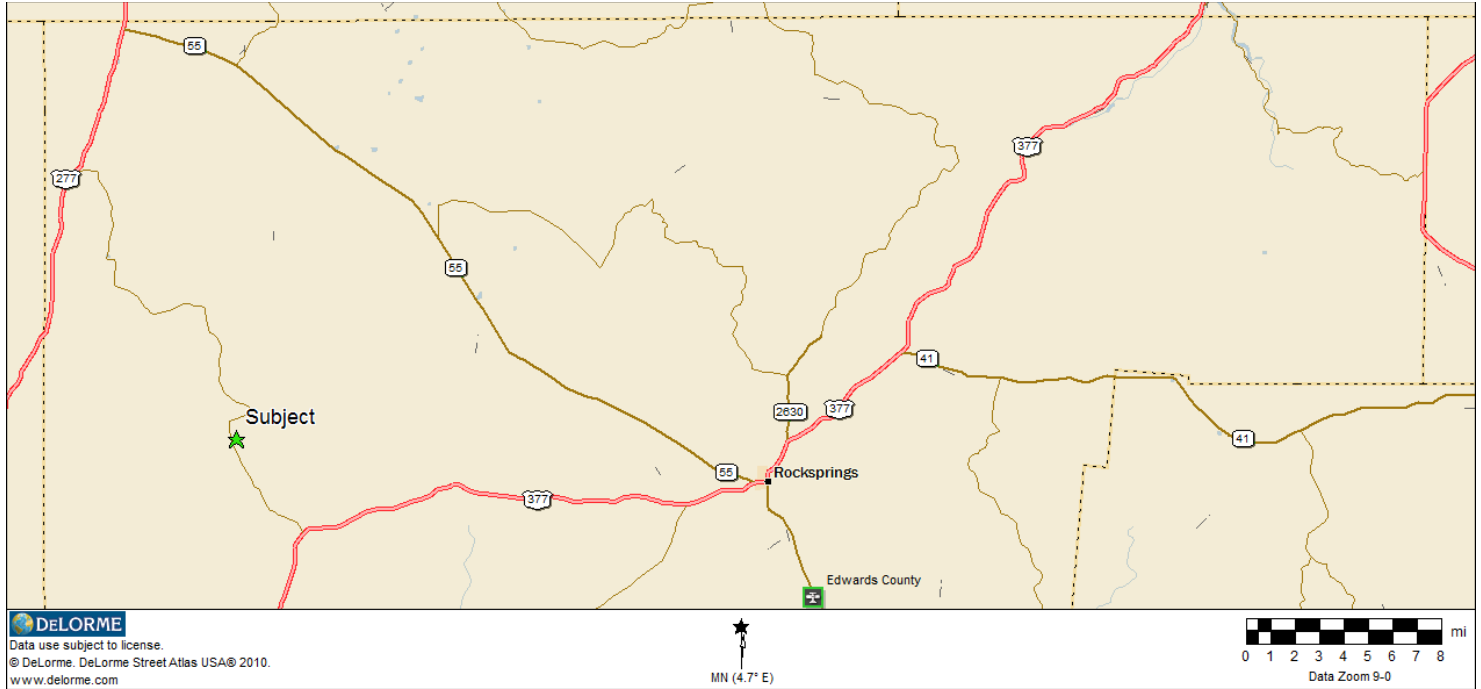
www.westernhillcountryrealty.com

info@westernhillcountryrealty.com

830-683-4435



Buffalo Flats ± 72.32 Acres



Western Hill Country Realty

www.westernhillcountryrealty.com

info@westernhillcountryrealty.com

830-683-4435



Buffalo Flats +/-72.32 Acres



Western Hill Country Realty

www.westernhillcountryrealty.com

info@westernhillcountryrealty.com

830-683-4435