

*632 Miracle Lane, Lincolnton, NC 27028*

*Julie Breedlove  
Realtor®/Broker  
(704) 661-9619*

*Julie@Breedlovecarolinas.com  
www.breedlovefarmsestatesandland.com*



*Breedlove*  
FARM'S ★ ESTATES ★ LAND



**Please be advised; home interior photos contained in this publication were taken 2016.**

*Breedlove Farms Estates and Land has made every effort to obtain the information contained herein from sources deemed reliable. However, we cannot warrant the complete accuracy thereof subject to errors and omissions. We recommend to the buyer that any information, which is of special interest, should be obtained through independent verification.*

*See MLS "attachments" for any possible disclosures, permits, aerials, square footage, plans, Restrictions & Covenants (if apply).*

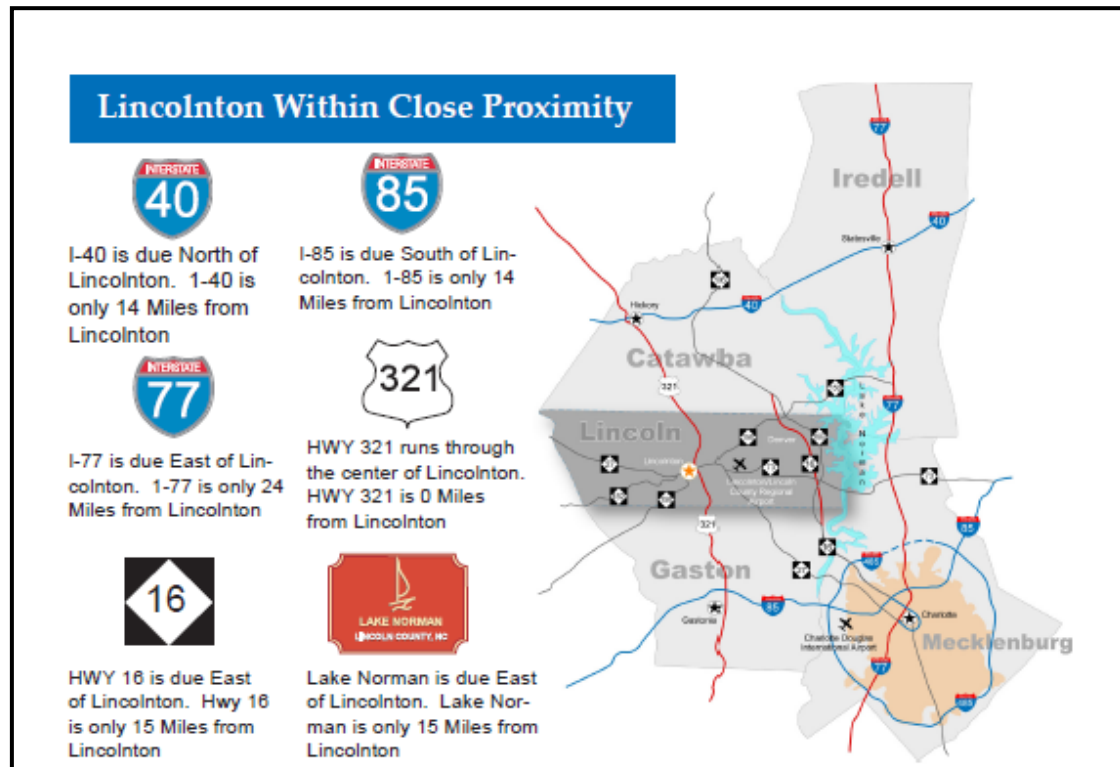
*This publication may not be reproduced or quoted in whole or in part by any means whatsoever without express written permission from Breedlove Farms Estates and Land.*

**Julie Breedlove  
Realtor®/Broker  
julie@breedlovecarolinas.com  
704-661-9619 cell • 704-528-5575 office**



# 632 Miracle Lane, Lincolnton, NC 27028

*Private home with approximately 20 acres of rolling terrain; fenced pastures, barn and wooded space. Home positioned on a knoll overlooking pastures & barn. Located in a small community (no HOA) outside the charming town of Lincolnton. The land and much of the surrounding land is conservatory land...less risk of developments encroaching.*



*Located on the “quiet side” of Charlotte, Lincolnton is a delightful surprise to visitors.*

*With a distinguished downtown, engaging history and quality accommodations, Lincolnton has maintained its small town charm while providing big city opportunities.*

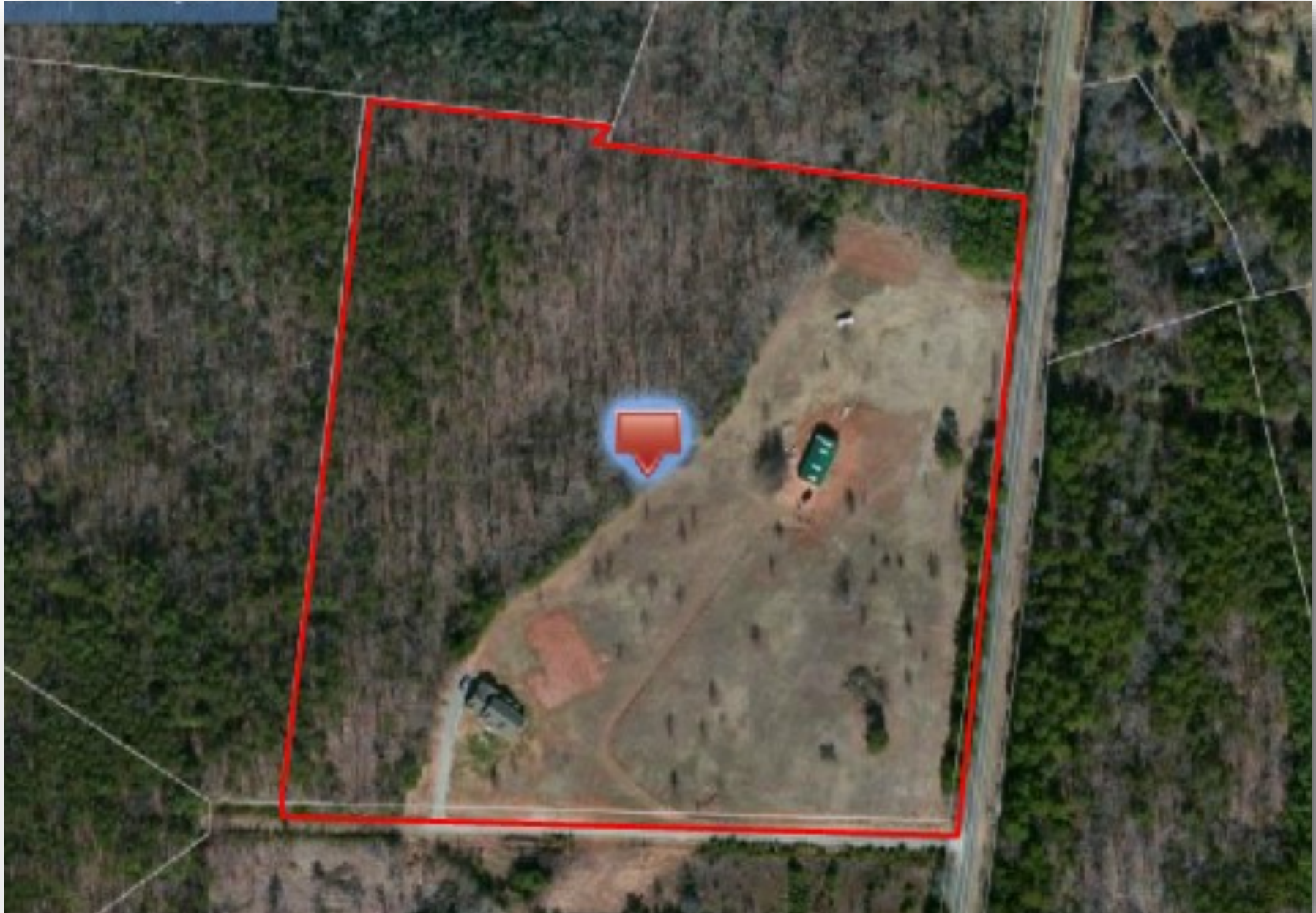
*Hiking and horseback riding in the nearby South Mountains, sailing and fishing on Lake Norman, North Carolina’s largest lake, and close proximity to Charlotte and Douglas International Airport, makes Lincolnton a rare find.*



*Aerial*

***Parcel ID: 53733***

***19.39 acres***



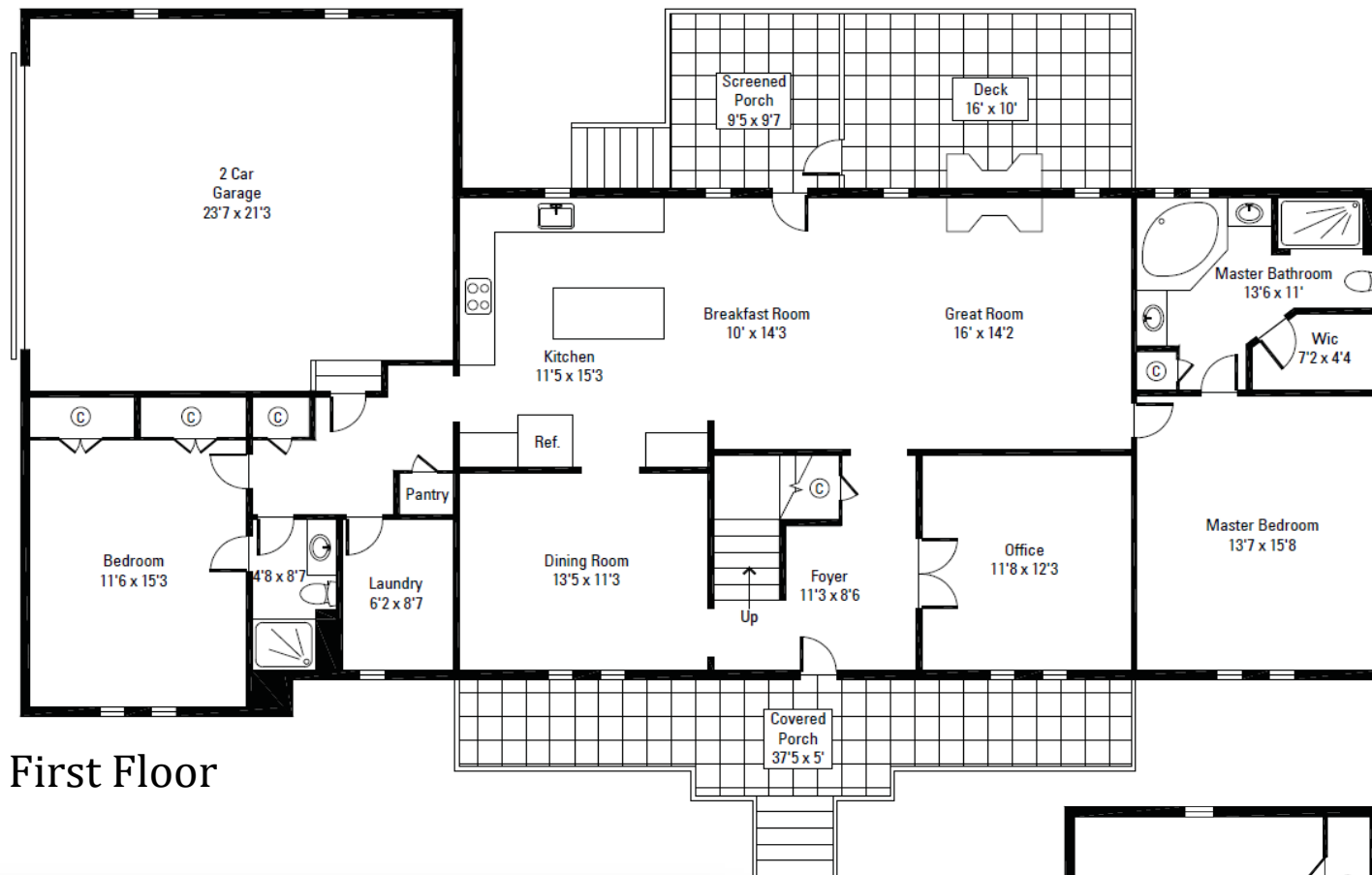


# Floor Plan

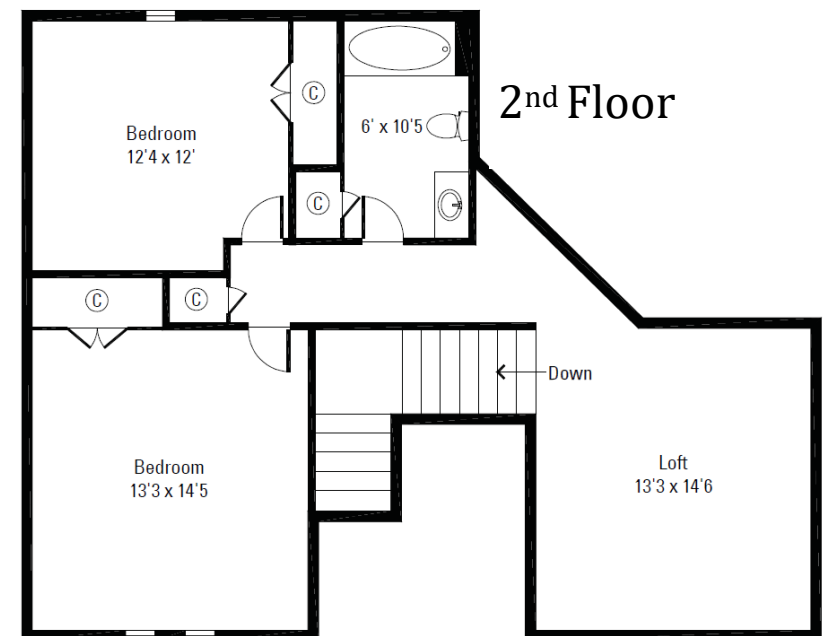
Main Level: 1,909sf

2nd Floor: 859sf

Total: 2,768sf



First Floor



2nd Floor



# *The Home — Interior*

Built 2010

2,618sf — 4 Bedrooms/3 Bathrooms

2 Main Floor Bedroom Suites

Primary Bedroom w/Cathedral Ceiling

Open Floor Plan

Hickory Hardwood & Tile Floors

Main Floor Office w/French Doors

Gourmet Kitchen w/Breakfast Area

Formal Dining Room

2-Story Great Room w/Fireplace

2<sup>nd</sup> Floor — Guest Bedrooms w/Full Bath & Loft

Laundry Room w/Tile & Shelving

2-Story Foyer

Tile Laundry Room





# *Kitchen/Breakfast Area*

Granite Island Breakfast Bar

Prep Sink

Pendant Lights

Stainless Steel Appliances

FiveStar 4-Burner Gas Range w/Griddle &  
Convection Oven

Hood

Pot Filler

Double Sink

Kitchenaid Dishwasher

LG Side-by-Side Refrigerator w/Drawer &  
Dispenser

Breakfast Area w/Stained Glass Light

French Doors to Screen Porch

Walk-In Pantry





# Great Room

2-Story Great Room

See Through Fireplace (Deck)

Hickory Hardwood Floor

Wall of Windows — Ceiling Level

2nd Floor Loft/Catwalk w/Wrought Railing  
Overlooking Great Room





## *Dining Room*

Hickory Hardwood Floor

Large Double Window—View to Front Lawn



## *Office*

Glass French Doors

Hickory Hardwood Floor



# *Main Floor Guest Suite*

Carpet

2 Wall Closets

Access to Bathroom

Cultured Marble Vanity

Tile Floor

Shower





# Primary Suite

## Main Level Primary Suite

Numerous Windows

Cathedral Ceiling w/Ceiling Fan

Carpet

Tile Bath

Two Vanities/Cultured Marble

Walk-In Closet

Corner Garden Tub

Shower

Linen Closet





# 2nd Level

*2 Bedrooms, Bathroom,/Large Loft (Overlooking Great Room)/Hall Closet/Pull Down Attic Stairs*

Guest Room 1

Carpet

Ceiling Fan

Guest Room 2

Carpet

Bathroom

Tile Floor

Cultured Marble Vanity

Shower/Tub

Linen Closet





# *The Home — Exterior*

Large Covered Front Porch

Covered Screen Back Porch w/Adjoining Deck w/  
Fireplace

Front Door w/Sidelights

Fiber Cement (“Hardie Board”) & Stone Exterior

Double Pane/Storm Windows

2-Car Side Load Garage





# *Equestrian/Farm Amenities*

Board, Flex & Rubber Coated High Tensil Fencing

7-Stall Barn

Separate Gated Driveway From Road

Board Siding w/Block Foundation

Stamped Concrete Center Aisle

Sliding End Doors

Metal Roof

Sliding Stall Fronts w/Yoke

Tack Room

Hay Storage

Equipment Storage



Arena (Sand Footing)

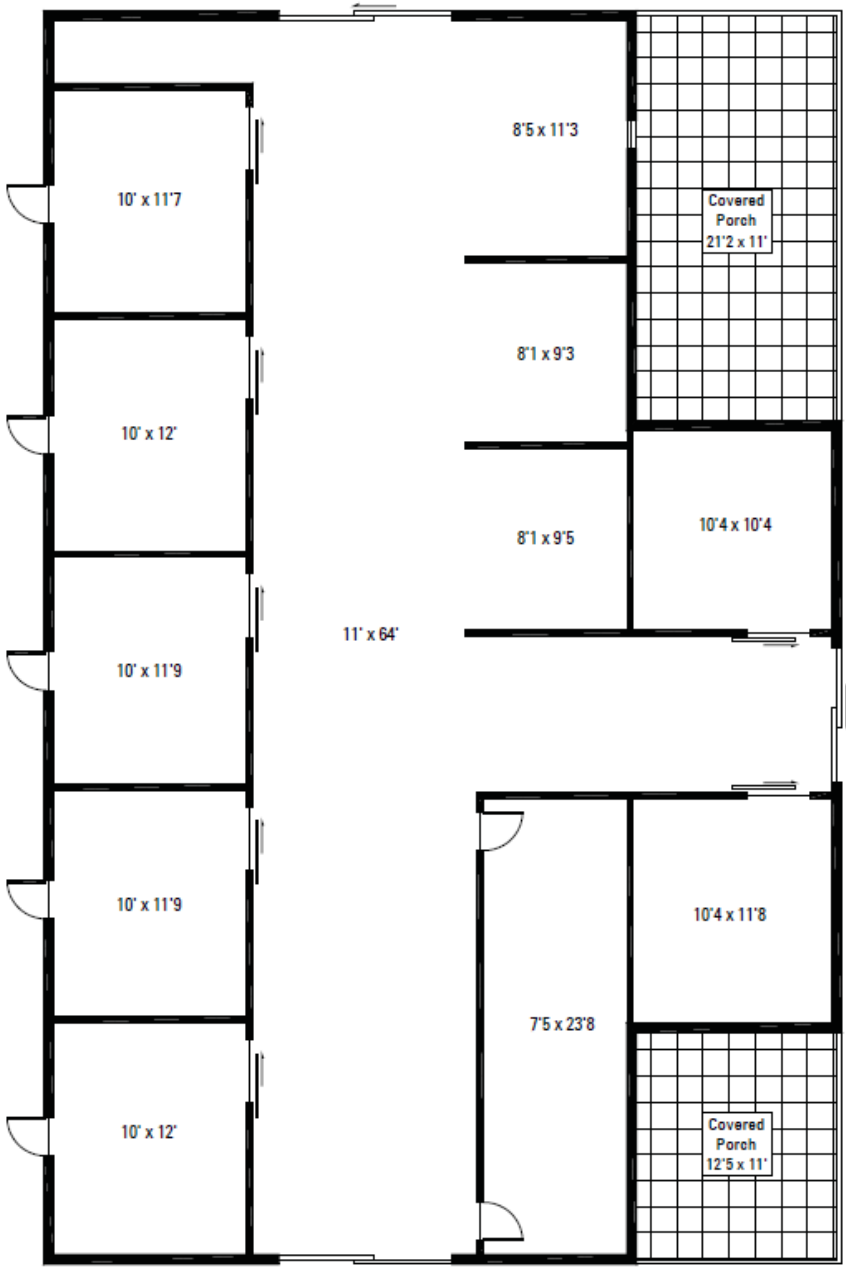
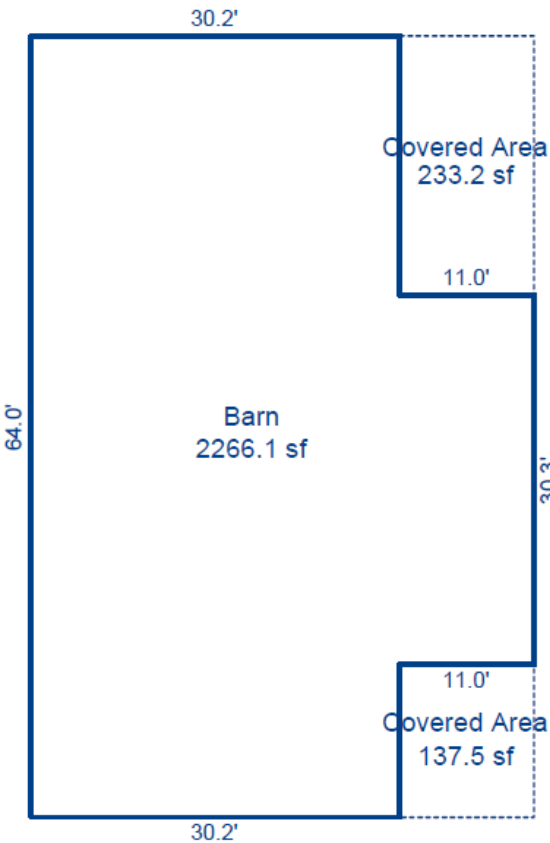
Trails

Pastures & Woods





# Barn Floor Plan





**Julie Breedlove  
Realtor®/Broker  
julie@breedlovecarolinas.com  
704-661-9619 cell • 704-528-5575 office**