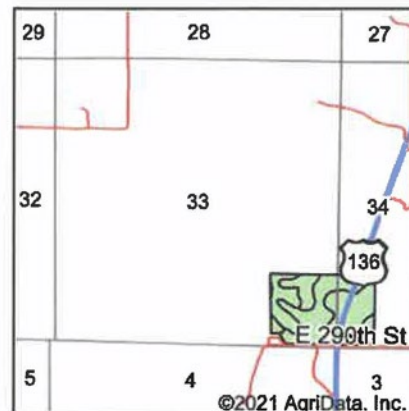
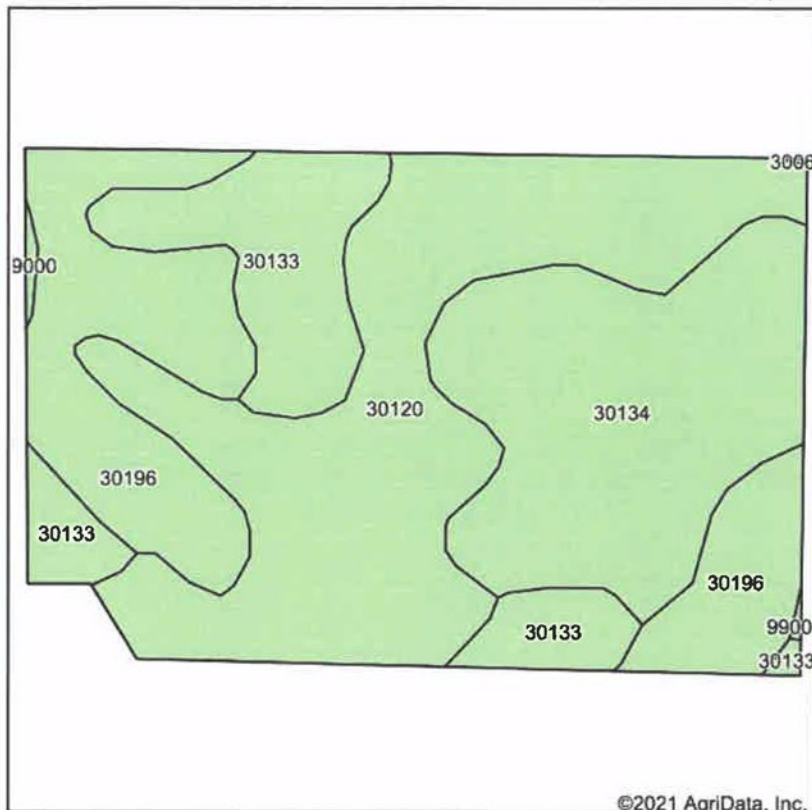


Soils Map



State: **Missouri**
 County: **Harrison**
 Location: **33-64N-26W**
 Township: **Trail Creek**
 Acres: **57.87**
 Date: **4/27/2021**

United Country
 NELSON REAL ESTATE

Maps Provided By:

surety
 CUSTOMIZED ONLINE MAPPING
 © AgriData, Inc. 2021 www.AgriDataInc.com



Area Symbol: MO081, Soil Area Version: 24

Code	Soil Description	Acres	Percent of field	Non-Irr Class *c	Alfalfa hay	Caucasian bluestem	Common bermudagrass	Orchardgrass red clover	Tall fescue	Warm season grasses
30120	Lagonda silty clay loam, 5 to 9 percent slopes, eroded	20.68	35.7%	IIIe	5	8	7	8	7	8
30134	Lamoni clay loam, 5 to 9 percent slopes, severely eroded	15.16	26.2%	VIe						
30196	Shelby clay loam, 9 to 14 percent slopes, severely eroded	12.81	22.1%	IVe						
30133	Lamoni clay loam, 5 to 9 percent slopes, moderately eroded	9.03	15.6%	IIIe						
99000	Pits, quarry	0.19	0.3%	VIII						
Weighted Average					1.8	2.9	2.5	2.9	2.5	2.9

*c: Using Capabilities Class Dominant Condition Aggregation Method