

Land For Sale

ACREAGE:

36.37 Acres, m/l

LOCATION:

Johnson County, IA



Property *Key Features*

- Located 4 Miles South of Lisbon, Iowa
- Mixture of Productive Cropland, Mature Timber and Creek
- Excellent Recreational Property With Abundance of Wildlife

Troy Louwagie, ALC
Licensed in IA & IL
TroyL@Hertz.ag

319-895-8858
102 Palisades Road & Hwy. 1
Mount Vernon, IA 52314
www.Hertz.ag



Cedar Township, Johnson County, IA



319-895-8858
102 Palisades Road & Hwy. 1
Mount Vernon, IA 52314
www.Hertz.ag



FSA/Eff. Crop Acres:	23.07*
Forest Reserve Acres:	13.52
Cert. Grass Acres:	1.60*
Corn Base Acres:	15.70*
Bean Base Acres:	5.85*
Soil Productivity:	68.67 CSR2

**Acres are estimated.*

Property Information

36.37 Acres, m/l

Location

From Solon: 1¼ miles north on Highway 1, 2¾ miles east on 140th Street, continue on Sutliff Road for 4½ miles and ¼ mile east on Clear Creek Road. The property is located on the south side of the road.

From Lisbon: 3⅓ miles south on Sutliff Road and ¼ mile east on Clear Creek Road. The property is located on the south side of the road.

Legal Description

The NE¼ of the NW¼ of Section 1, Township 81 North, Range 5 West of the 5th P.M., Johnson County, Iowa.

Price & Terms

- \$290,960.00
- \$8,000/acre
- 10% down upon acceptance of offer; balance due in cash at closing.

Possession

Negotiable. Subject to the 2021 50/50 crop share lease.

Real Estate Tax

Taxes Payable 2020 - 2021: \$788.00
Gross Acres: 36.37
Net Taxable Acres: 22.85*
Tax per Net Taxable Acre: \$34.49
**There are 13.52 acres in the Forest Reserve Program and are exempt from Real Estate Taxes.*

FSA Data

Part of Farm Number 23, Tract 1761
FSA/Eff. Crop Acres: 23.07*
Cert. Grass Acres: 4.34*
Corn Base Acres: 15.70*
Corn PLC Yield: 119 Bu.
Bean Base Acres: 5.85*
Bean PLC Yield: 36 Bu.
**Acres are estimated pending reconstitution of farm by the Johnson County FSA office.*

Soil Types/Productivity

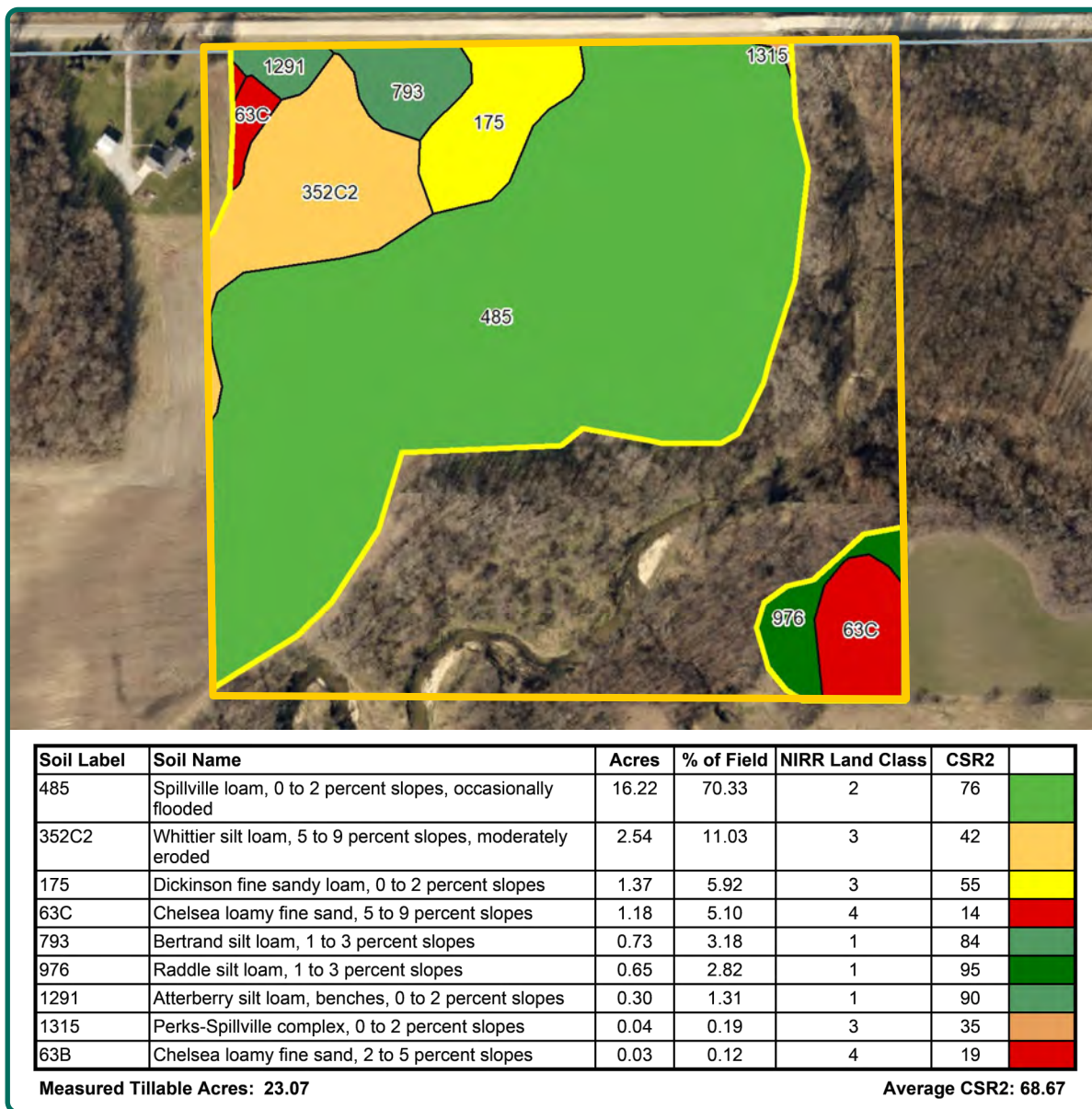
Primary soils are Spillville, Whittier and Dickinson. CSR2 on the estimated FSA/ Eff. crop acres is 68.67. See soil map for detail.

Land Description

Level to gently rolling.

Troy Louwagie, ALC
Licensed in IA & IL
TroyL@Hertz.ag

319-895-8858
102 Palisades Road & Hwy. 1
Mount Vernon, IA 52314
www.Hertz.ag



Drainage

Natural.

Water & Well Information

None.

Comments

This is a nice recreational property with a mixture of cropland, timber and creek.

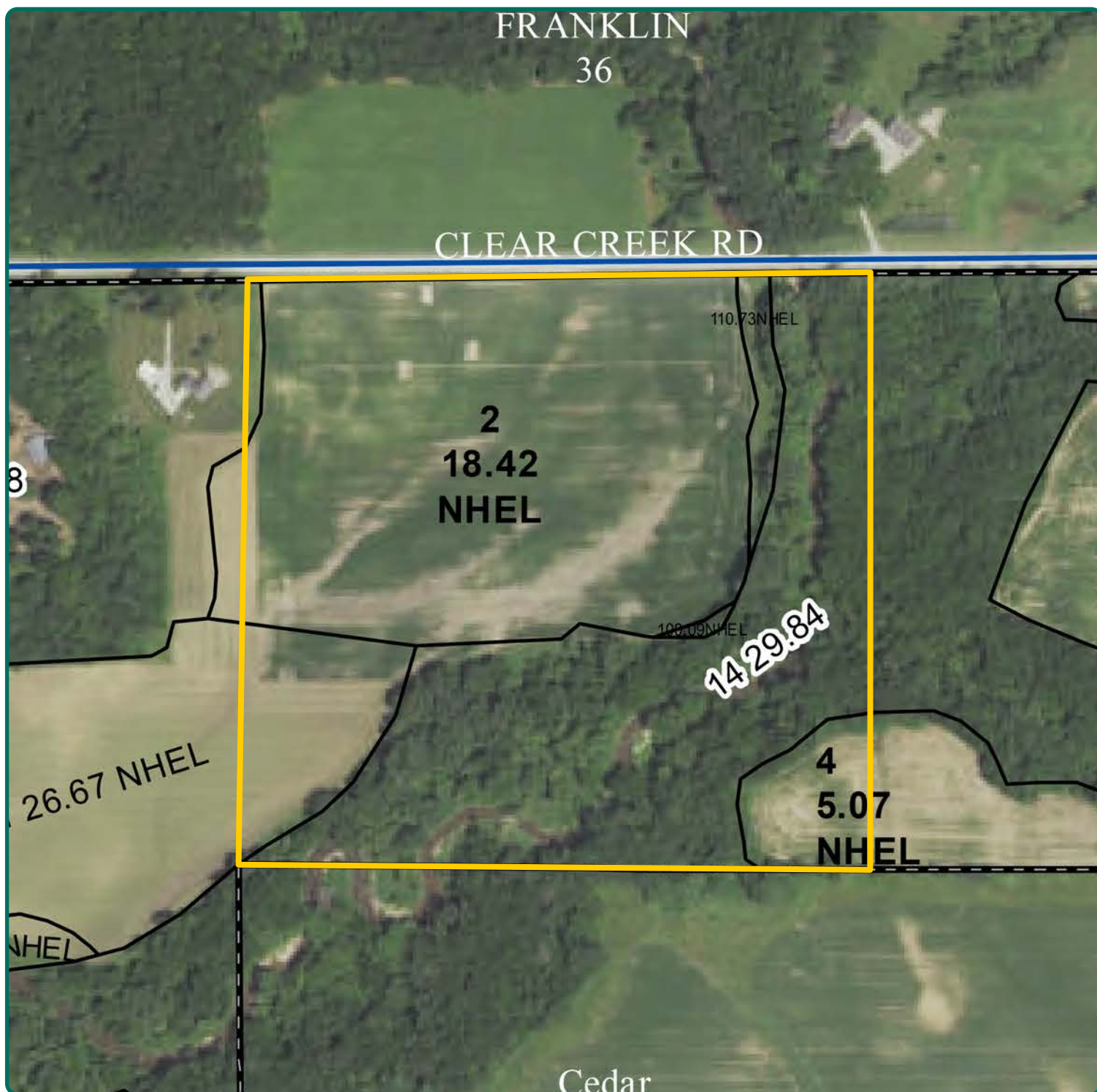
Additional Land for Sale

Seller has an additional tract of land for sale located directly east of this property. See Additional Land Aerial Photo.

The information gathered for this brochure is from sources deemed reliable, but cannot be guaranteed by Hertz Real Estate Services or its staff. All acres are considered more or less, unless otherwise stated. All property boundaries are approximate. Soil productivity ratings are based on the information currently available in the USDA/NRCS soil survey database. Those numbers are subject to change on an annual basis.

Troy Louwagie, ALC
Licensed in IA & IL
TroyL@Hertz.ag

319-895-8858
102 Palisades Road & Hwy. 1
Mount Vernon, IA 52314
www.Hertz.ag



Troy Louwagie, ALC
Licensed in IA & IL
TroyL@Hertz.ag

319-895-8858
102 Palisades Road & Hwy. 1
Mount Vernon, IA 52314
www.Hertz.ag



Troy Louwagie, ALC
Licensed in IA & IL
TroyL@Hertz.ag

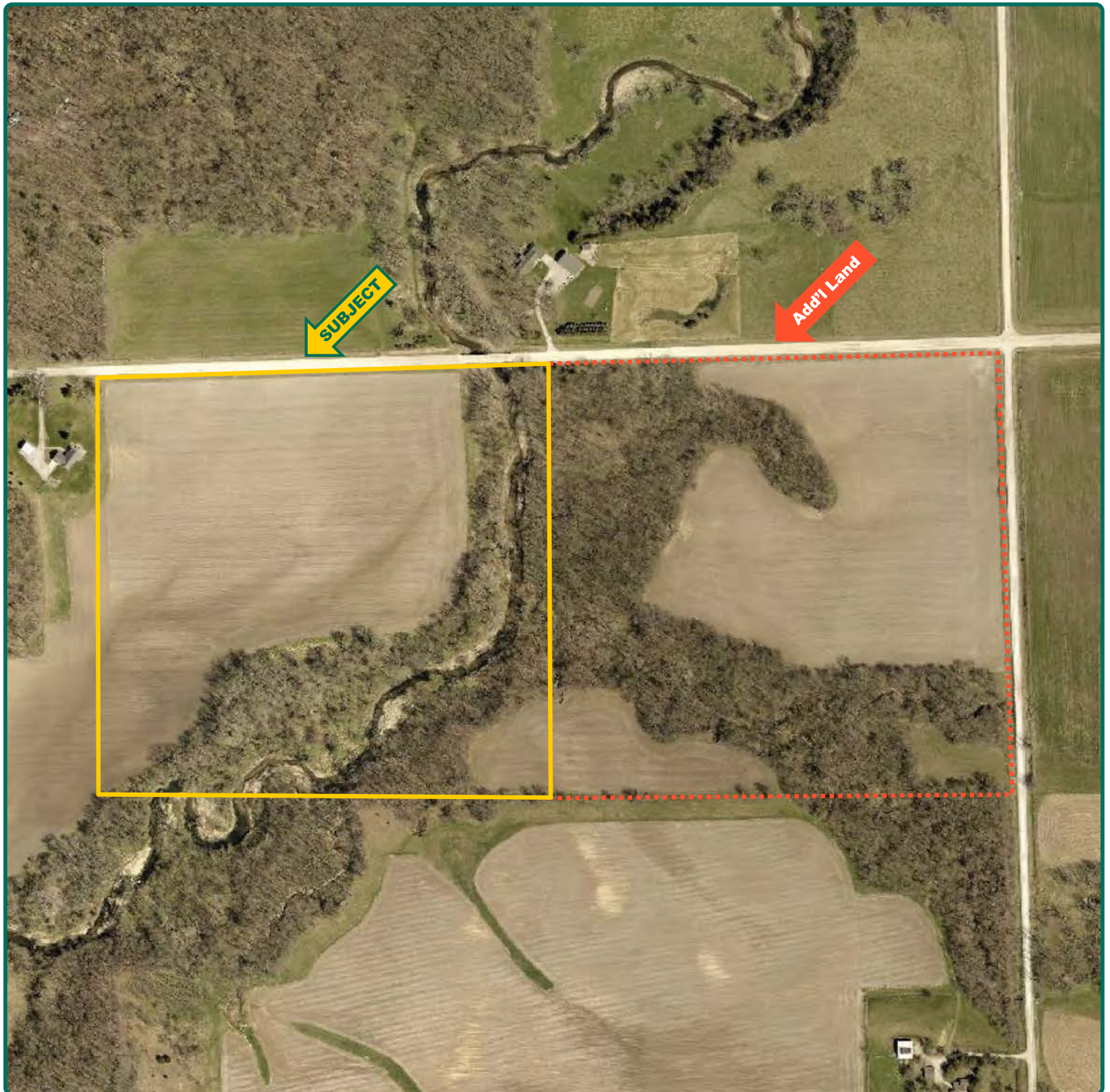
319-895-8858
102 Palisades Road & Hwy. 1
Mount Vernon, IA 52314
www.Hertz.ag



Troy Louwagie, ALC
Licensed in IA & IL
TroyL@Hertz.ag

319-895-8858
102 Palisades Road & Hwy. 1
Mount Vernon, IA 52314
www.Hertz.ag

Additional Land Aerial Photos



Troy Louwagie, ALC
Licensed in IA & IL
TroyL@Hertz.ag

319-895-8858
102 Palisades Road & Hwy. 1
Mount Vernon, IA 52314
www.Hertz.ag