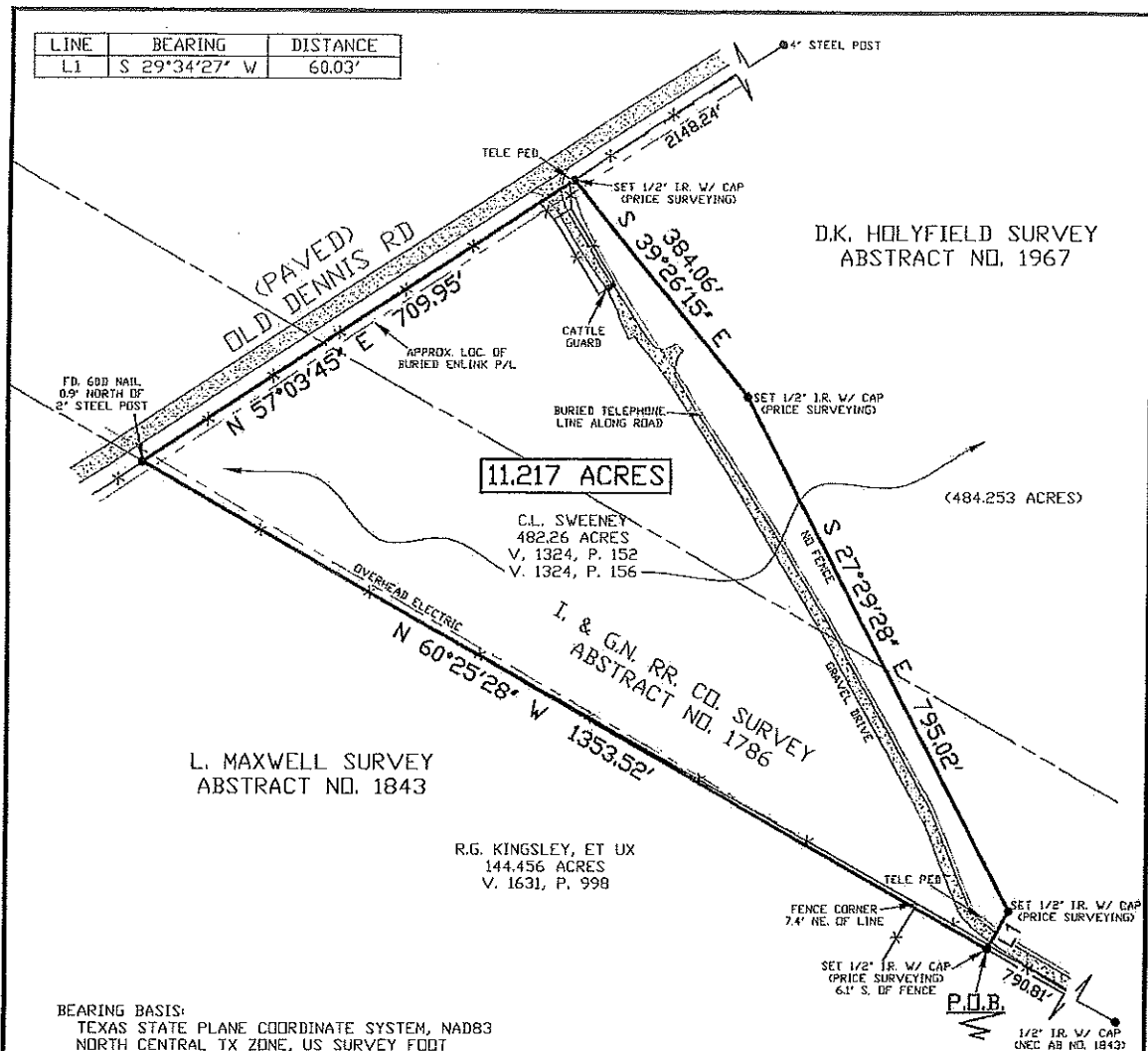


LINE	BEARING	DISTANCE
L1	S 29°34'27" W	60.03'



### PLAT OF SURVEY AND IMPROVEMENTS

OF AN 11.217 ACRES TRACT OF LAND OUT OF THE I. & G.N. RR. CO.  
SURVEY, ABSTRACT NO. 1786 AND THE D.K. HOLYFIELD SURVEY,  
ABSTRACT NO. 1967, BOTH IN PARKER COUNTY, TEXAS

THIS PLAT REPRESENTS A SURVEY MADE ON THE GROUND BY ME  
OR UNDER MY DIRECT SUPERVISION ON AUGUST 17, 2018. THE  
DIMENSIONS, CALLS, SIZE, LOCATION AND TYPE OF IMPROVEMENTS  
ARE TRUE AND CORRECT AS SHOWN ON THE PLAT. THERE ARE NO  
ENCROACHMENTS, CONFLICTS, PROTRUSIONS OR VISIBLE OR  
APPARENT EASEMENTS, EXCEPT AS SHOWN ON THE PLAT.

*Philip E. Colvin, Jr.*

PHILIP E. COLVIN, JR., R.P.L.S. NO. 6258  
PRICE SURVEYING, LP, FIRM #10034200  
213 S OAK AVE, MINERAL WELLS, TX 76067  
940-325-4841 JN18662 18662A.dwg FN180848

