

SURVEY FOR

WILLIAM E. LANGSTON and CAROLYN F. LANGSTON

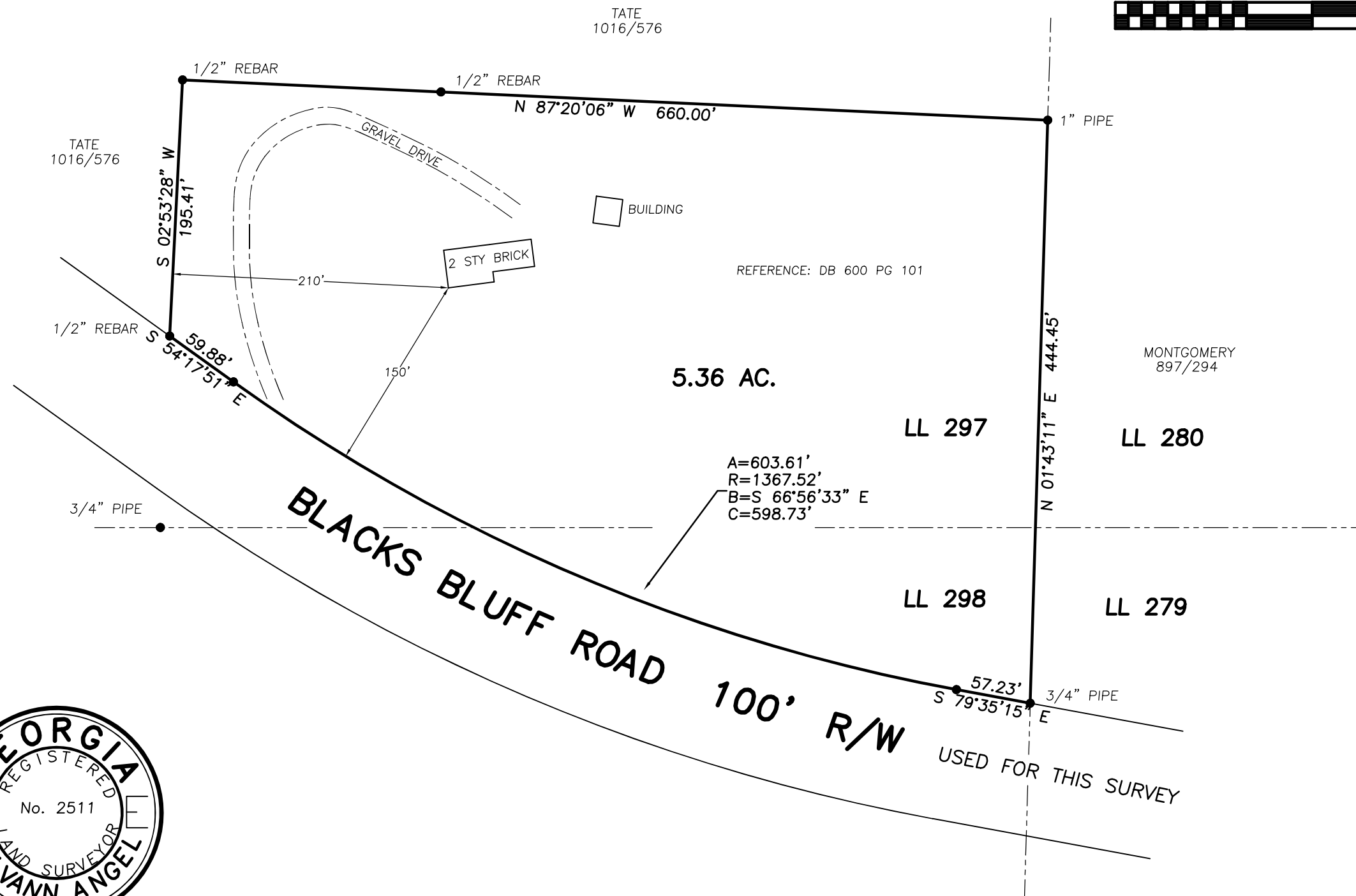
BEING IN LAND LOTS 297 and 298 16th DISTRICT

4th SECTION FLOYD COUNTY GEORGIA

REFERENCE PLAT BY N.B. DELOACH
DATED JULY 22, 1987 REVISED
JULY 29, 1987 DB 1012 PG 716

SCALE 1" = 100'

DECEMBER 11, 1993



The field data upon which this plat is based has a closure precision of more than one foot in 10,000 feet and an angular error of less than 10" per angle point and was adjusted using the Compass Rule.

This plat has been calculated for closure and is found to be accurate within one foot in 10,000 feet.

Equipment used for measurement:

Angular: Topcon GTS 3D
Linear: Topcon GTS 3D

Based upon review of the Federal Emergency Management Agency Flood Insurance Rate Map for Community 130079 Panel 0225 A with an effective date of MAY 19, 1987 the property shown does not lie within a Flood Area.



W. VANN ANGEL

GEORGIA REG. LAND SURVEYOR — 2511
956 ADAMS ROAD
CEDARTOWN, GA. 30125
(404) 748-0419

JOB No. 93-275 878-02A D242 PLAT B-93-288