

Location



Map Updated: Thursday, April 8, 2021. This information submitted is not guaranteed. Although obtained from reliable sources, all information should be confirmed prior to use or reliance upon the information. This document may not be reproduced in whole or in part without the express written consent of NAI Avant.





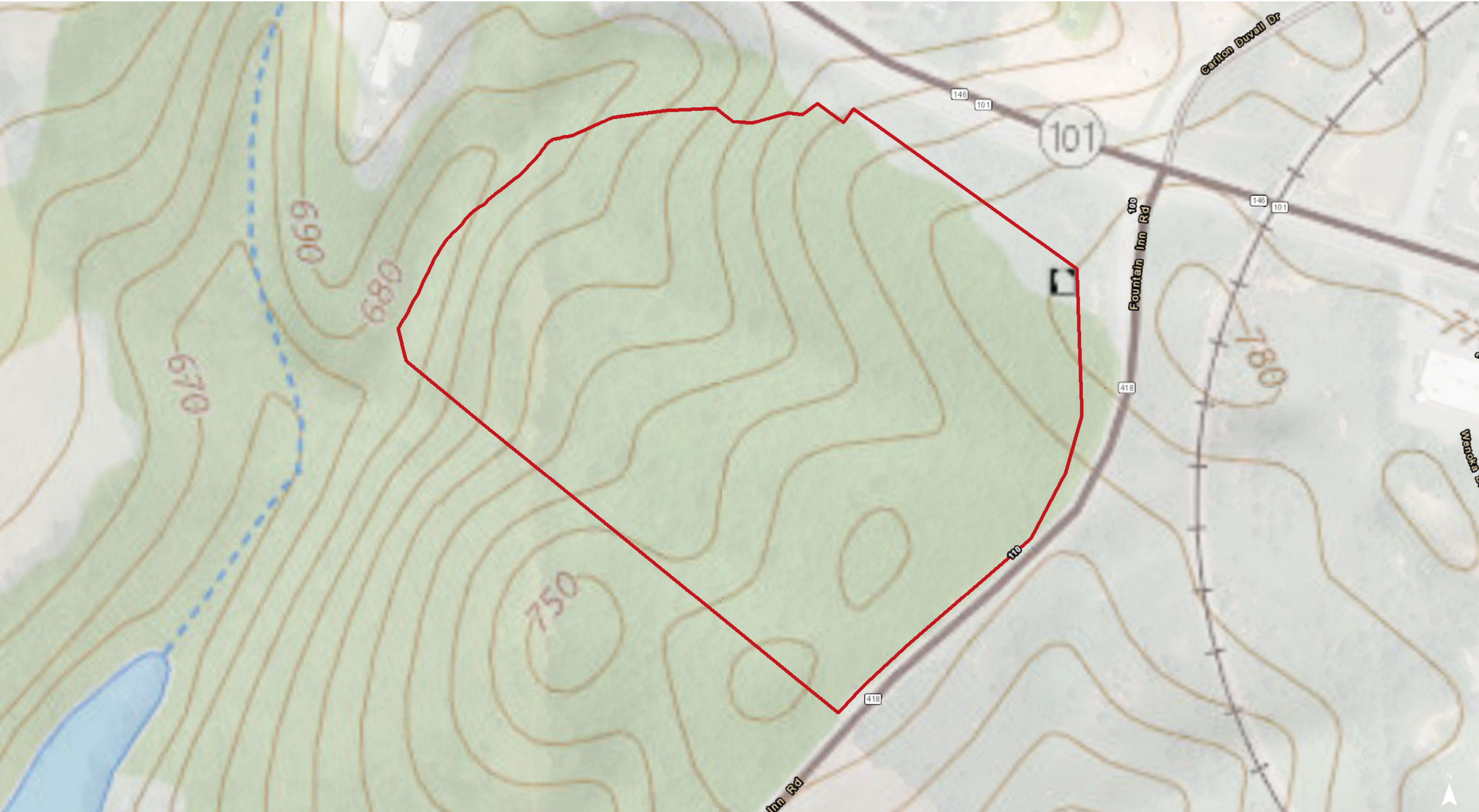
Map Updated: Thursday, April 8, 2021. This information submitted is not guaranteed. Although obtained from reliable sources, all information should be confirmed prior to use or reliance upon the information. This document may not be reproduced in whole or in part without the express written consent of NAI Avant.





Map Updated: Thursday, April 8, 2021. This information submitted is not guaranteed. Although obtained from reliable sources, all information should be confirmed prior to use or reliance upon the information. This document may not be reproduced in whole or in part without the express written consent of NAI Avant.





Map Updated: Thursday, April 8, 2021. This information submitted is not guaranteed. Although obtained from reliable sources, all information should be confirmed prior to use or reliance upon the information. This document may not be reproduced in whole or in part without the express written consent of NAI Avant.





Map Updated: Thursday, April 8, 2021. This information submitted is not guaranteed. Although obtained from reliable sources, all information should be confirmed prior to use or reliance upon the information. This document may not be reproduced in whole or in part without the express written consent of NAI Avant.





Map Updated: Thursday, April 8, 2021. This information submitted is not guaranteed. Although obtained from reliable sources, all information should be confirmed prior to use or reliance upon the information. This document may not be reproduced in whole or in part without the express written consent of NAI Avant.





Map Updated: Thursday, April 8, 2021. This information submitted is not guaranteed. Although obtained from reliable sources, all information should be confirmed prior to use or reliance upon the information. This document may not be reproduced in whole or in part without the express written consent of NAI Avant.



Map Unit Description (Brief, Generated)

Spartanburg County, South Carolina

[Minor map unit components are excluded from this report]

Map unit: CcC - Cecil sandy loam, 6 to 10 percent slopes

Component: Cecil (88%)

The Cecil component makes up 88 percent of the map unit. Slopes are 6 to 10 percent. This component is on interfluves on southern piedmonts. The parent material consists of residuum weathered from granite and/or residuum weathered from gneiss. Depth to a root restrictive layer is greater than 60 inches. The natural drainage class is well drained. Water movement in the most restrictive layer is moderately high. Available water to a depth of 60 inches is moderate. Shrink-swell potential is low. This soil is not flooded. It is not ponded. There is no zone of water saturation within a depth of 72 inches. Organic matter content in the surface horizon is about 1 percent. Nonirrigated land capability classification is 3e. This soil does not meet hydric criteria.

Map unit: CfC3 - Cecil clay loam, 6 to 10 percent slopes, severely eroded

Component: Cecil, severely eroded (88%)

The Cecil, severely eroded component makes up 88 percent of the map unit. Slopes are 6 to 10 percent. This component is on interfluves on piedmonts. The parent material consists of residuum weathered from granite and/or residuum weathered from gneiss. Depth to a root restrictive layer is greater than 60 inches. The natural drainage class is well drained. Water movement in the most restrictive layer is moderately high. Available water to a depth of 60 inches is moderate. Shrink-swell potential is low. This soil is not flooded. It is not ponded. There is no zone of water saturation within a depth of 72 inches. Organic matter content in the surface horizon is about 1 percent. Nonirrigated land capability classification is 4e. This soil does not meet hydric criteria.

Map unit: CmD2 - Cecil-Bethlehem complex, 10 to 15 percent slopes, moderately eroded

Component: Cecil, moderately eroded (65%)

The Cecil, moderately eroded component makes up 65 percent of the map unit. Slopes are 10 to 15 percent. This component is on interfluves on piedmonts. The parent material consists of residuum weathered from granite and/or residuum weathered from gneiss. Depth to a root restrictive layer is greater than 60 inches. The natural drainage class is well drained. Water movement in the most restrictive layer is moderately high. Available water to a depth of 60 inches is moderate. Shrink-swell potential is low. This soil is not flooded. It is not ponded. There is no zone of water saturation within a depth of 72 inches. Organic matter content in the surface horizon is about 1 percent. Nonirrigated land capability classification is 4e. This soil does not meet hydric criteria.

Component: Bethlehem, moderately eroded (25%)

The Bethlehem, moderately eroded component makes up 25 percent of the map unit. Slopes are 10 to 15 percent. This component is on interfluves on piedmonts. The parent material consists of residuum weathered from schist. Depth to a root restrictive layer, bedrock, paralithic, is 20 to 40 inches. The natural drainage class is well drained. Water movement in the most restrictive layer is low. Available water to a depth of 60 inches is very low. Shrink-swell potential is low. This soil is not flooded. It is not ponded. There is no zone of water saturation within a depth of 72 inches. Organic matter content in the surface horizon is about 1 percent. Nonirrigated land capability classification is 4e. This soil does not meet hydric criteria.

Spartanburg County, South Carolina

[Minor map unit components are excluded from this report]

Map unit: CmE2 - Cecil-Bethlehem complex, 15 to 25 percent slopes, moderately eroded

Component: Cecil, moderately eroded (70%)

The Cecil, moderately eroded component makes up 70 percent of the map unit. Slopes are 15 to 25 percent. This component is on interfluves on piedmonts. The parent material consists of residuum weathered from granite and/or residuum weathered from gneiss. Depth to a root restrictive layer is greater than 60 inches. The natural drainage class is well drained. Water movement in the most restrictive layer is moderately high. Available water to a depth of 60 inches is moderate. Shrink-swell potential is low. This soil is not flooded. It is not ponded. There is no zone of water saturation within a depth of 72 inches. Organic matter content in the surface horizon is about 1 percent. Nonirrigated land capability classification is 6e. This soil does not meet hydric criteria.

Component: Bethlehem, moderately eroded (30%)

The Bethlehem, moderately eroded component makes up 30 percent of the map unit. Slopes are 15 to 25 percent. This component is on interfluves on piedmonts. The parent material consists of residuum weathered from schist. Depth to a root restrictive layer, bedrock, paralithic, is 20 to 40 inches. The natural drainage class is well drained. Water movement in the most restrictive layer is low. Available water to a depth of 60 inches is very low. Shrink-swell potential is low. This soil is not flooded. It is not ponded. There is no zone of water saturation within a depth of 72 inches. Organic matter content in the surface horizon is about 1 percent. Nonirrigated land capability classification is 6e. This soil does not meet hydric criteria.

Map unit: PdE3 - Pacolet clay loam, 15 to 25 percent slopes, severely eroded

Component: Pacolet, severely eroded (91%)

The Pacolet, severely eroded component makes up 91 percent of the map unit. Slopes are 15 to 25 percent. This component is on interfluves on piedmonts. The parent material consists of residuum weathered from gneiss and/or residuum weathered from granite. Depth to a root restrictive layer is greater than 60 inches. The natural drainage class is well drained. Water movement in the most restrictive layer is moderately high. Available water to a depth of 60 inches is moderate. Shrink-swell potential is low. This soil is not flooded. It is not ponded. There is no zone of water saturation within a depth of 72 inches. Organic matter content in the surface horizon is about 1 percent. Nonirrigated land capability classification is 7e. This soil does not meet hydric criteria.