



GRAPELAND RANCH

Grapeland, Tx



Kathleen Blanks

REALTOR®

214-616-9231

kathleen@legacybrokergroup.com



LEGACY
BROKER GROUP

GRAPELAND RANCH

Grapeland, Tx

This 92 acre ranch just outside of Grapeland, TX is a true hunter's paradise. Grapeland Ranch butts up to a U.S Govt forest, providing the perfect habitats for wild game.

This ranch is fully fenced for livestock, with nearly 40 acres of productive grazing land, and the other acreage full of mature hardwoods, 2 ponds and a flowing creek.

Up on top of a hill sits a beautiful 2 bedroom 2 bathroom Barndominium shell that is framed out on the inside and ready for its new owner to finish.

ABOUT THIS PROPERTY

County
Houston

Barndominium
2,400sqft

Bedrooms
2

Bathrooms
2

Location
Grapeland,
TX

Built
2018

Acres
92.89

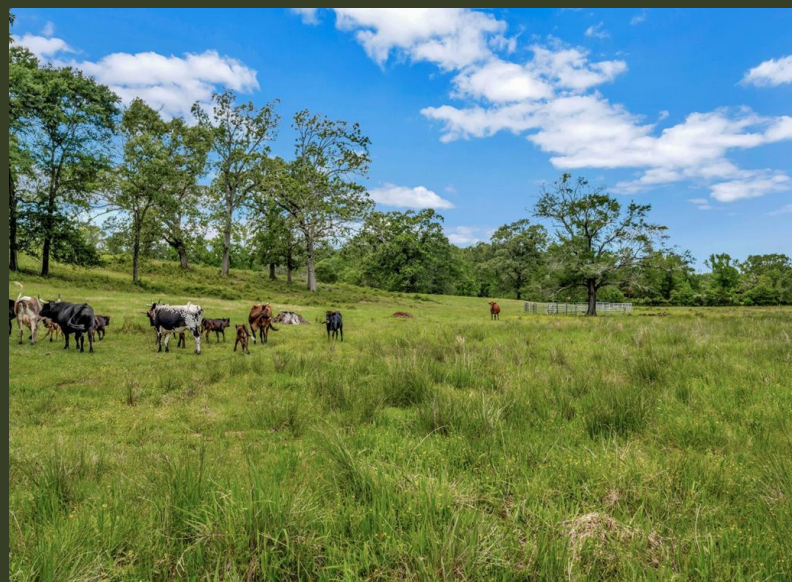
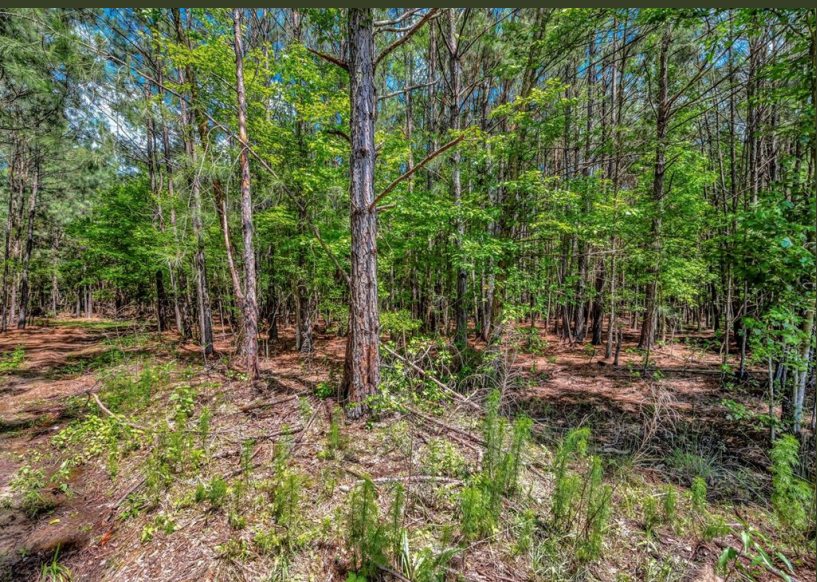


This barndominium boasts a 1,000 sqft shop, and a covered porch overlooking the beautiful pasture.

Down the hill from the home, you will find a fruit orchard, as well as a location for a garden. See for yourself!











LEGACY
BROKER GROUP



Kathleen Blanks

REALTOR®

214-616-9231

kathleen@legacybrokergroup.com

Legacy Broker Group is your premier source for ranching, hunting,
recreation, mineral leases, and more - start your land legacy
with Legacy Broker Group.

- FOLLOW LEGACY BROKER GROUP ON SOCIAL MEDIA -



@LegacyBrokerGroup



@legacybrokergroup



www.legacybrokergroup.com



@LegacyBrokerGroup



@LegacyBrokerGroup



EQUAL HOUSING OPPORTUNITY. IF YOU HAVE A BROKERAGE RELATIONSHIP WITH ANOTHER AGENCY,
THIS IS NOT INTENDED AS A SOLICITATION. ALL INFORMATION DEEMED RELIABLE BUT NOT GUARANTEED