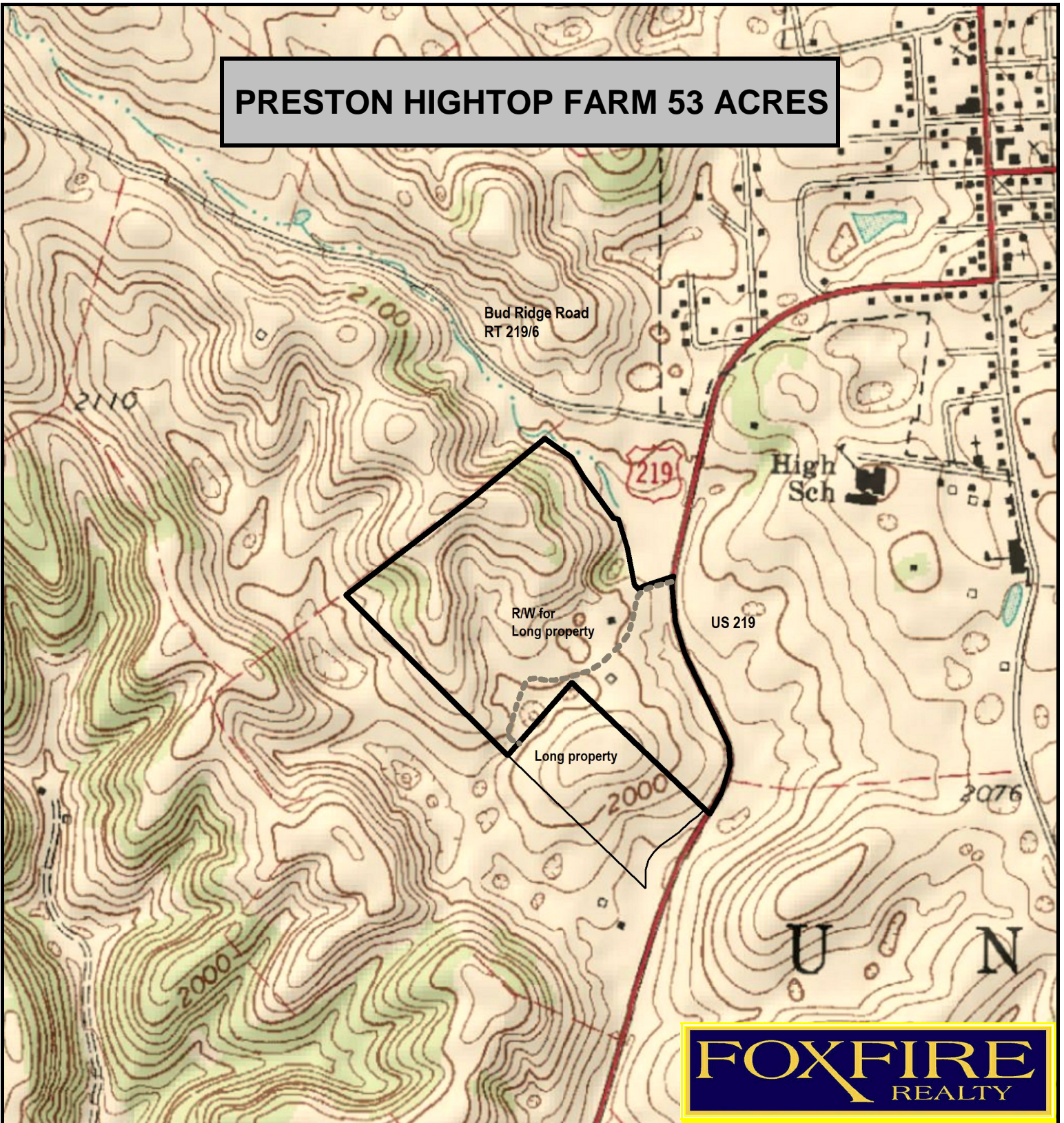


PRESTON HIGHTOP FARM 53 ACRES



FOXFIRE
REALTY

PRESTON HIGHTOP FARM 53 ACRES, Monroe County, WV
(topographic map)
Elevation Range: 1953' - 2137' +/-; Google Coordinates:
LAT 37.584757 (N), LON -80.550302 (W)
This map is for general location purposes only. Consult a licensed
land surveyor for actual boundary location and acreage.

RICHARD GRIST, Broker - Auctioneer - Forester
304.646.8837 Richard@Foxfirenation.com
WWW.FOXFIRENATION.COM

FOR TOPO MAP

SCALE 1:9600

1 INCH = 800 FT.

