



# MT Shadows Ranch 103 Acres



Located in southwestern Edwards county  
Good easy access, yet remote near end of the road property  
Like new 2014 3/2 72x16 ft MH completely furnished  
with all the comforts of home

Water, electricity, septic

Covered front porch providing tremendous views across the land  
and allowing for nice quiet peaceful evenings watching the wildlife

Additional storage building and skinning rack

Gentle rolling to moderately steep terrain with several cleared out areas for blinds and feeders  
Seller has left about 50 percent of the property untouched providing sanctuaries for the wildlife

Abundant thick habitat and vegetation for the wildlife  
including live oaks, shin oaks, pinion pine and cedar

Great trail system in place to get around the property

2 blinds, 3 spincast feeders, 2 1500lb protein feeders, 2 watering troughs

All in place keeping the wildlife abundant and healthy

Wildlife tax exemption in place

\$379,000 Listing #171

## Western Hill Country Realty

[www.westernhillcountryrealty.com](http://www.westernhillcountryrealty.com)

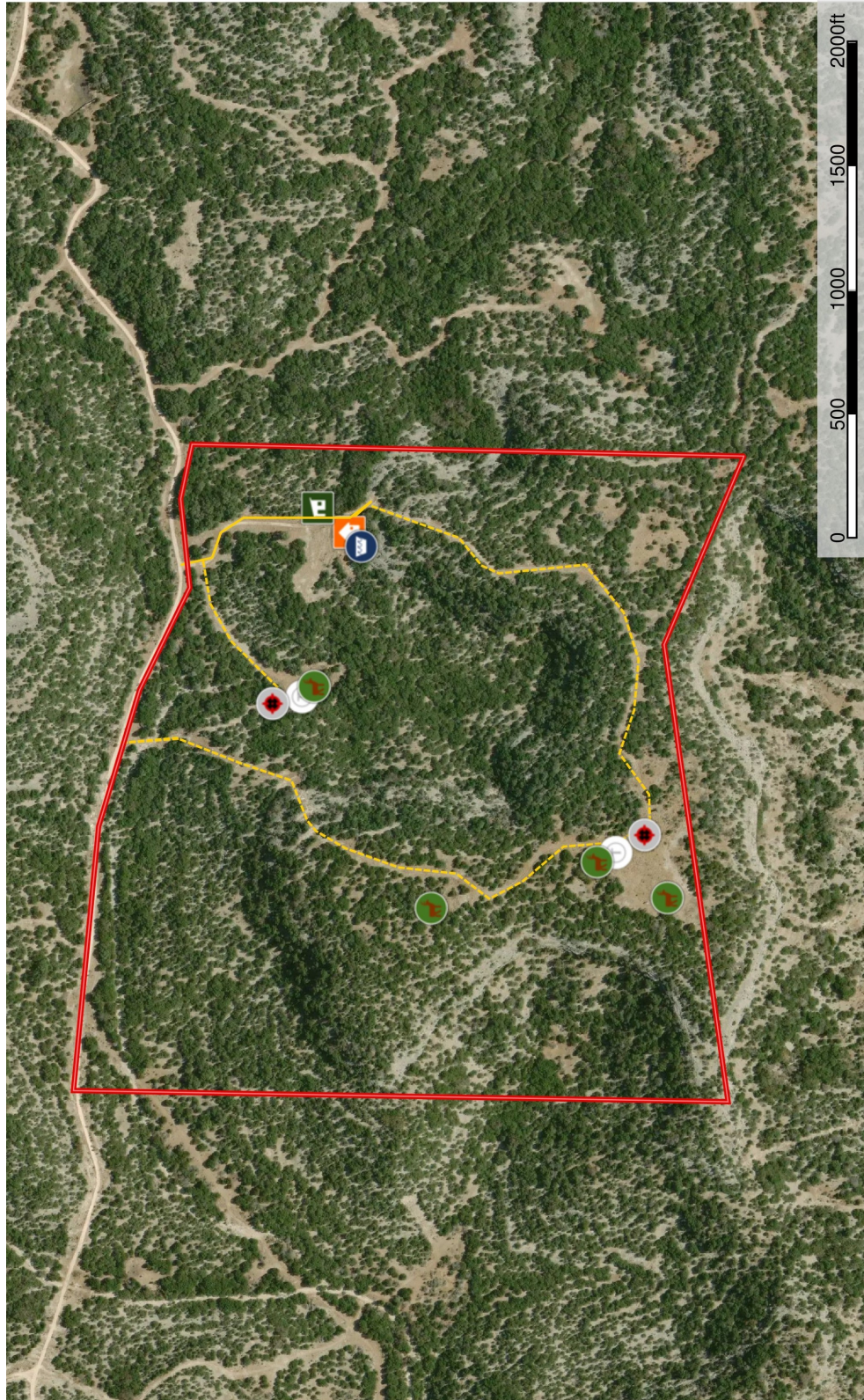
[info@westernhillcountryrealty.com](mailto:info@westernhillcountryrealty.com)

830-683-4435





# MT Shadows Ranch 103 Acres



The information contained herein was obtained from sources deemed to be reliable. MapRight Services makes no warranties or guarantees as to the completeness or accuracy thereof.

John Morgan Davis  
P: 830-683-7090 jmdavis@swtexas.net PO Box 1111

## Western Hill Country Realty

[www.westernhillcountryrealty.com](http://www.westernhillcountryrealty.com)

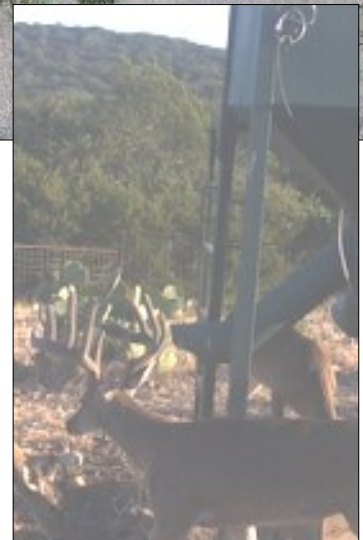
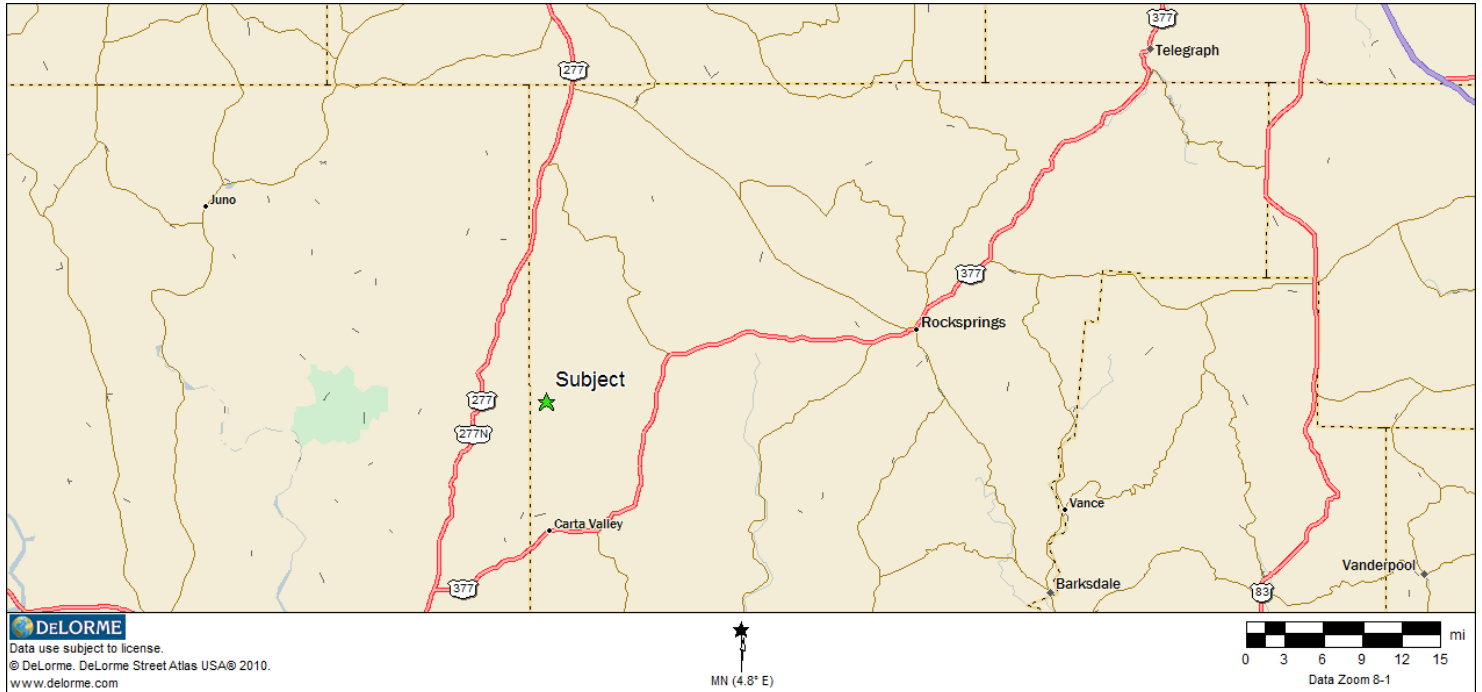
[info@westernhillcountryrealty.com](mailto:info@westernhillcountryrealty.com)

830-683-4435





# MT Shadows Ranch 103 Acres



## Western Hill Country Realty

[www.westernhillcountryrealty.com](http://www.westernhillcountryrealty.com)

[info@westernhillcountryrealty.com](mailto:info@westernhillcountryrealty.com)

830-683-4435





# MT Shadows Ranch 103 Acres



**Western Hill Country Realty**

[www.westernhillcountryrealty.com](http://www.westernhillcountryrealty.com)

[info@westernhillcountryrealty.com](mailto:info@westernhillcountryrealty.com)

830-683-4435