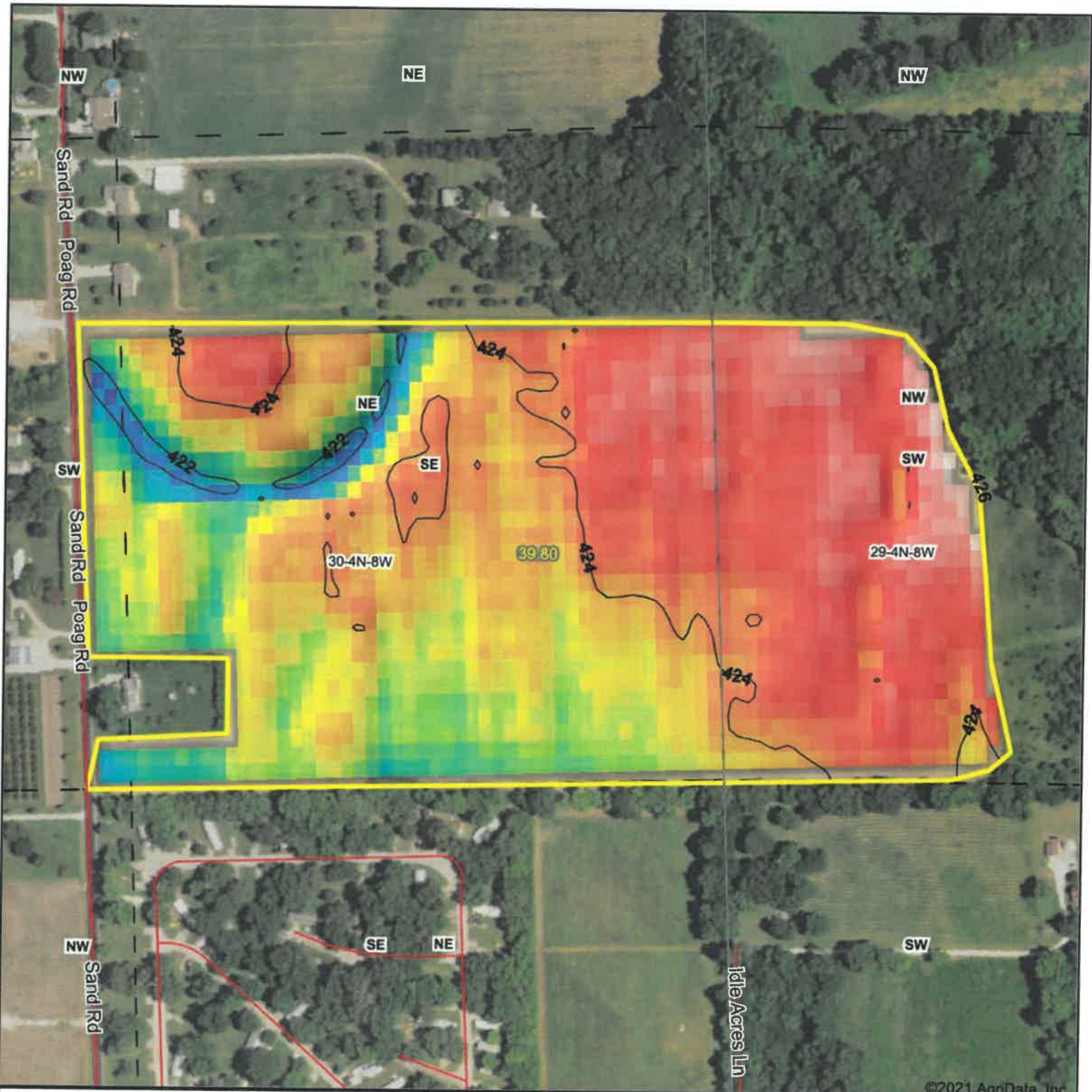


# Topography Hillshade



Source: USGS 10 meter dem  
Interval(ft): 2  
Min: 421.2  
Max: 425.6  
Range: 4.4  
Average: 423.9  
Standard Deviation: 0.72 ft



Maps Provided By:  
**surety**  
CUSTOMIZED ONLINE MAPPING  
© AgriData, Inc. 2021 www.AgriDataInc.com



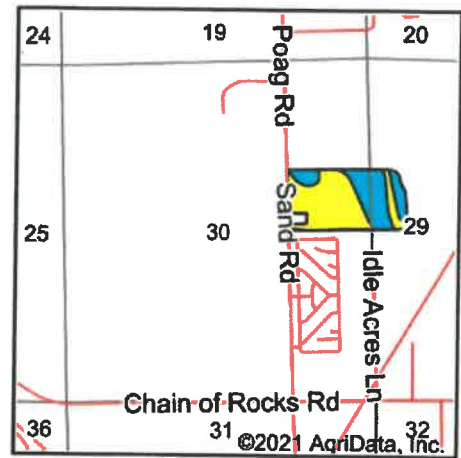
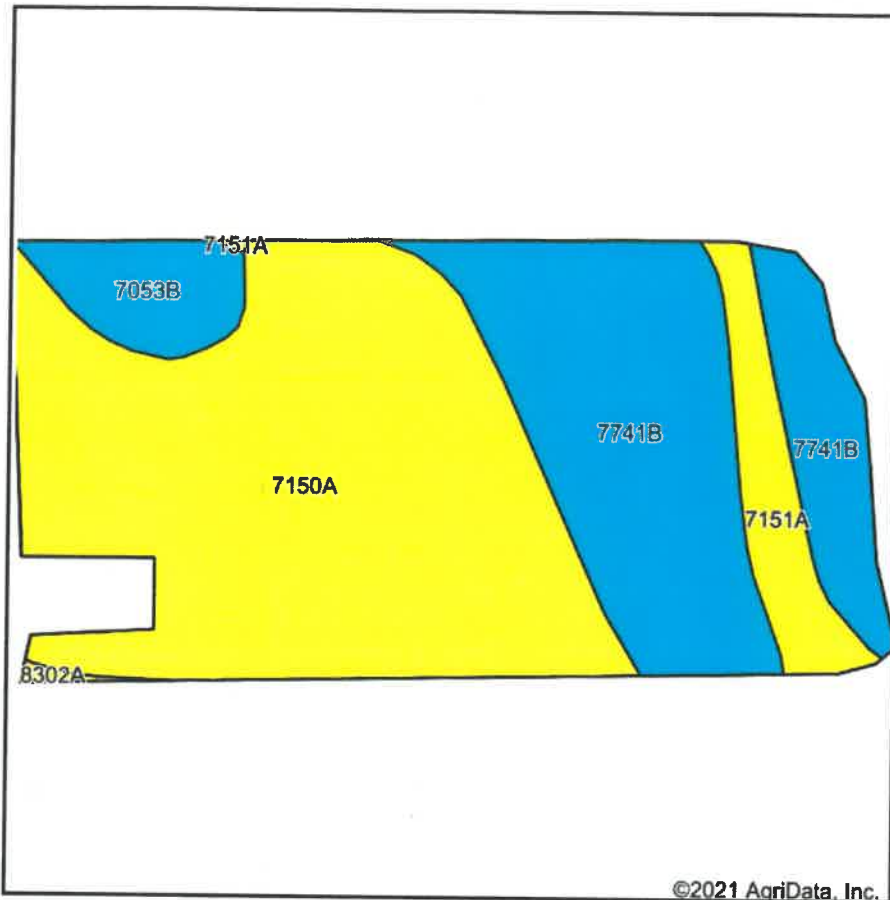
6/1/2021

**30-4N-8W**  
**Madison County**  
**Illinois**

map center: 38° 46' 4.18, -90° 1' 19.58

©2021 AgriData, Inc.

# Soils Map



State: **Illinois**  
 County: **Madison**  
 Location: **30-4N-8W**  
 Township: **Edwardsville**  
 Acres: **39.8**  
 Date: **6/1/2021**



Maps Provided By:



Soils data provided by USDA and NRCS.

Area Symbol: IL119, Soil Area Version: 15

Code	Soil Description	Acres	Percent of field	Il. State Productivity Index Legend	Subsoil rooting a	Corn Bu/A	Soybeans Bu/A	Wheat Bu/A	Oats Bu/A b	Sorghum c Bu/A	Alfalfa d hay, T/A	Grass-legume e hay, T/A	Crop productivity index for optimum management
7150A	Onarga sandy loam, 0 to 2 percent slopes, rarely flooded	21.80	54.8%		FAV	148	48	61	77	0	4.14	0.00	110
7741B	Oakville fine sand, 2 to 5 percent slopes, rarely flooded	13.02	32.7%		FAV	107	38	47	53	0	0.00	3.64	82
7151A	Ridgeville fine sandy loam, 0 to 2 percent slopes, rarely flooded	2.69	6.8%		FAV	151	51	63	78	0	0.00	5.02	114
7053B	Bloomfield loamy fine sand, 2 to 5 percent slopes, rarely flooded	2.17	5.5%		FAV	115	37	49	59	0	0.00	3.89	85
8302A	Ambraw silty clay loam, 0 to 2 percent slopes, occasionally flooded	0.12	0.3%		FAV	154	50	61	75	0	0.00	5.02	114
Weighted Average						133	44.3	55.9	68.2	*	2.27	1.76	99.8

**Table: Optimum Crop Productivity Ratings for Illinois Soil by K.R. Olson and J.M. Lang, Office of Research, ACES, University of Illinois at Champaign-Urbana. Version: 1/2/2012 Amended Table S2 B811**

Crop yields and productivity indices for optimum management (B811) are maintained at the following NRES web site: <http://soilproductivity.nres.illinois.edu/>

\*\* Indexes adjusted for slope and erosion according to Bulletin 811 Table S3

a UNF = unfavorable; FAV = favorable

b Soils in the southern region were not rated for oats and are shown with a zero "0".

c Soils in the northern region or in both regions were not rated for grain sorghum and are shown with a zero "0".

d Soils in the poorly drained group were not rated for alfalfa and are shown with a zero "0".

e Soils in the well drained group were not rated for grass-legume and are shown with a zero "0".

\*c: Using Capabilities Class Dominant Condition Aggregation Method

Soils data provided by USDA and NRCS. Soils data provided by University of Illinois at Champaign-Urbana.



# 4 Year Crop History



Owner/Operator:  Date: 6/1/2021  
 Address:  Farm Name:   
 Address:  Field ID:   
 Phone:  Acct. #:

Crop Year: 2020

Crop Year: 2019



Crop Year: 2018

Crop Year: 2017



Map Center: 38° 46' 4.18, -90° 1' 19.58

State: IL

County: Madison

Legal: 30-4N-8W

Twnshp: Edwardsville

Crop data provided by USDA National Agricultural Statistics Service Cropland Data Layer



Maps Provided By:

