

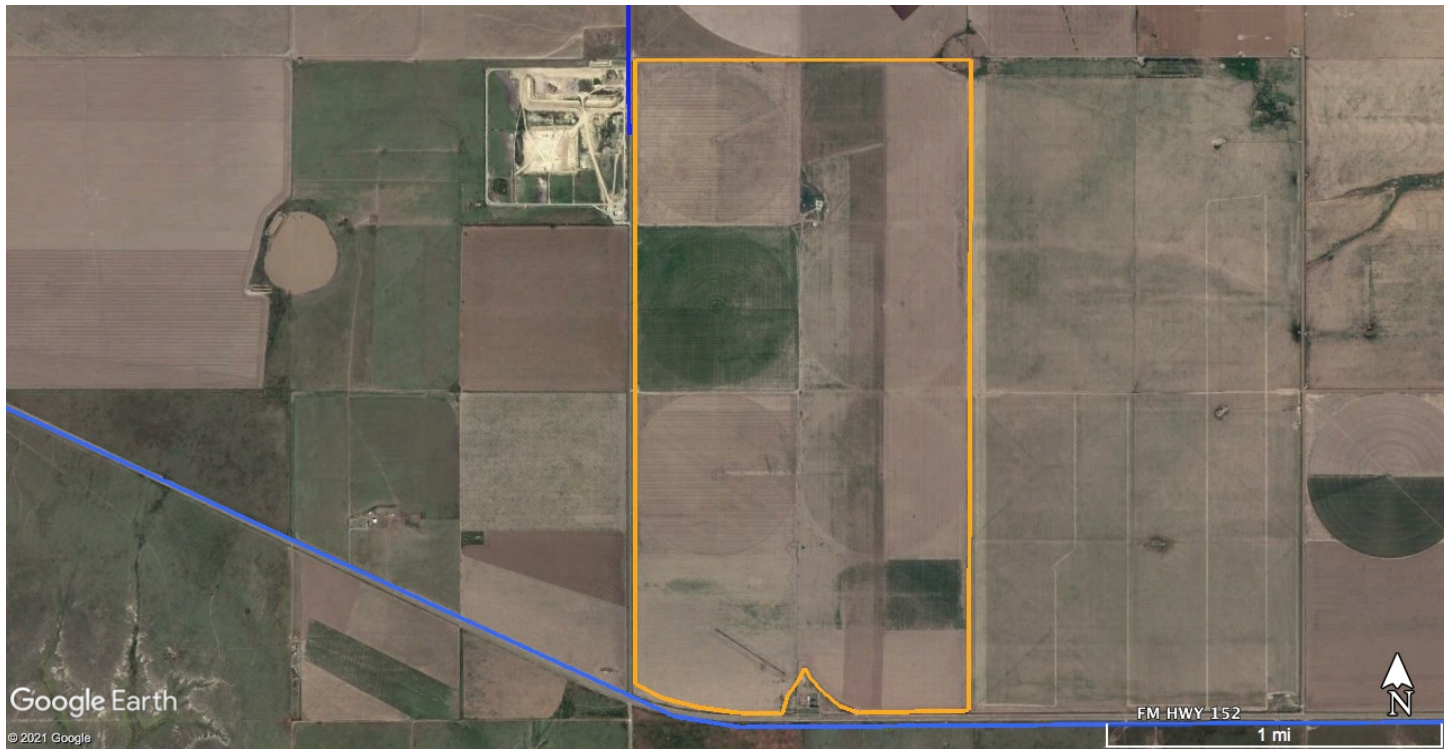


Shawn Gillispie, Broker PH:  
806-922-5532  
6107 S Coulter STE #300  
AMARILLO, TEXAS 79119

# FOR SALE

**Moore County Irrigated  
1248 Acres**

**\$3,494,400  
\$2,800/acre**



## Moore County Irrigated 1248

**Location:** 14 miles east of Dumas, TX on FM 152 on the north side of highway. Keith Rd is a county road that runs for 2 miles along the west boundary of the property. Morton Elevator with Dumas Coop is an 8 mile drive from the farm. Texas Beef Producers Feedlot is 8 miles to the NW of farm. Single phase electricity runs along 2 boundaries and through to the center of the north section.

**Total Acres:** 1,248

**Total Sprinklers:** 8 - ¼ mile sprinklers

**Total Wells:** 9

**Total GPM:** Estimated 2,350 gpm

**Average GPM/ Well:** Estimated 260 gpm

**Improvements:**

**South Section-** 4 – ¼ milers 3 - T&L 1980-1990 model

1 – Reinke 1980-1990 model

Sprinklers nozzled for 475 gpm each

4 – irrigation wells with turbine pumps and gearheads

3 – Chevy 350 engines

1 – Ford engine

Estimated gpm for south section – 1,100 gpm

5 wire barbed wire perimeter fencing

**North Section-** 4 – ¼ milers 1 – Pierce 2011 model

3 – Zimmatic 1980's models

All sprinklers nozzled at 600 gpm

5 - irrigation wells with turbine pumps and gearheads

5 – Chevy engines

Estimated gpm for north section - 1,250 gpm

5 wire barbed wire perimeter fence

**Price: \$3,494,400 or \$2,800/ acre**