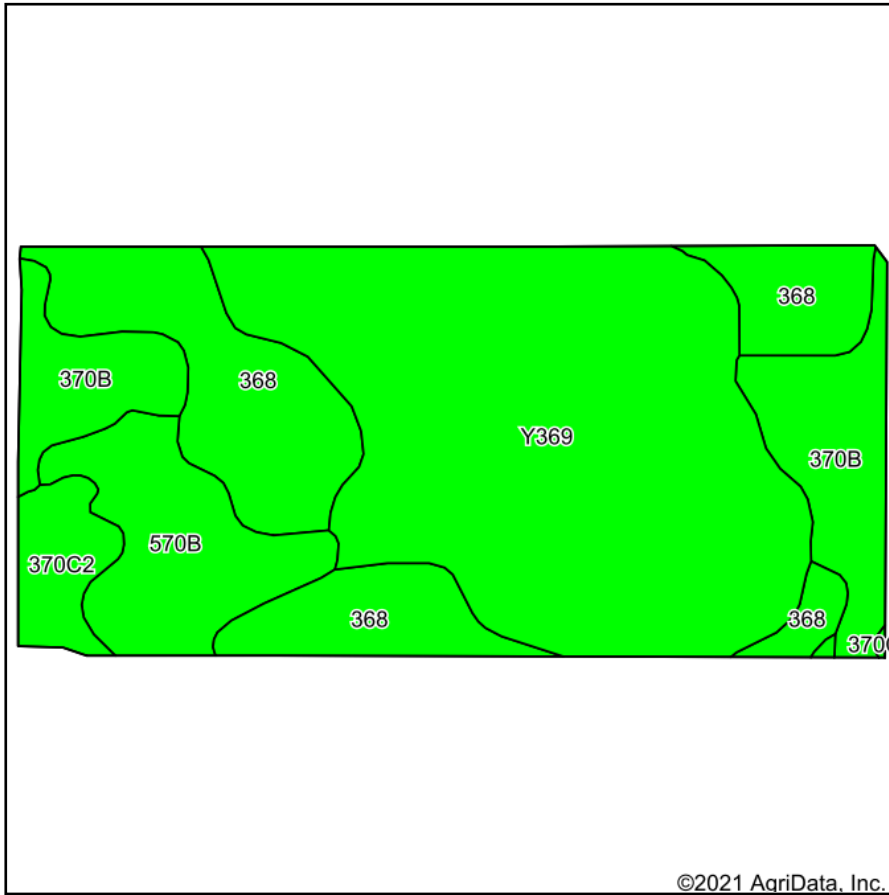
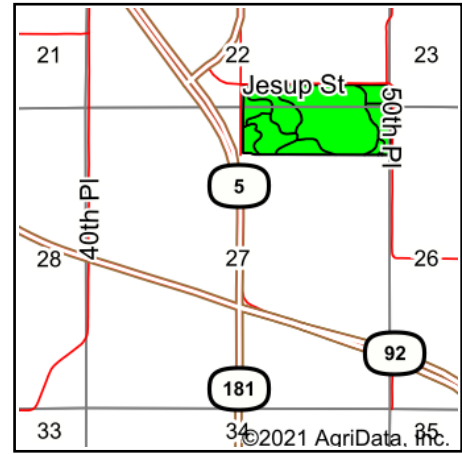


# Tillable Soils Map



Soils data provided by USDA and NRCS.



State: **Iowa**  
 County: **Marion**  
 Location: **27-76N-21W**  
 Township: **Pleasant Grove**  
 Acres: **72.01**  
 Date: **6/8/2021**



Maps Provided By:



© AgriData, Inc. 2021

www.AgriDataInc.com



Area Symbol: IA125, Soil Area Version: 29

Code	Soil Description	Acres	Percent of field	CSR2 Legend	Non-Irr Class *c	*i Corn	*i Soybeans	CSR2**	CSR	*n NCCPI Overall
Y369	Winterset silty clay loam, 0 to 2 percent slopes	35.12	48.8%		IIw	0	0	83		78
368	Macksburg silty clay loam, 0 to 2 percent slopes	16.88	23.4%		Iw	230.4	66.8	93	95	87
370B	Sharpsburg silty clay loam, 2 to 5 percent slopes	9.59	13.3%		Ile	225.6	65.4	91	87	93
570B	Nira silty clay loam, 2 to 5 percent slopes	7.52	10.4%		Ile	208	60.3	80	86	98
370C2	Sharpsburg silty clay loam, 5 to 9 percent slopes, eroded	2.83	3.9%		IIIe	204.8	59.4	80	67	84
368B	Macksburg silty clay loam, 2 to 5 percent slopes	0.07	0.1%		Ile	222.4	64.5	89	90	87
<b>Weighted Average</b>						<b>114</b>	<b>33.1</b>	<b>86</b>	<b>*-</b>	<b>*n 84.4</b>

\*\*IA has updated the CSR values for each county to CSR2.

\*- CSR weighted average cannot be calculated on the current soils data, use prior data version for csr values.

\*i Yield data provided by the ISPAID Database version 8.1.1 developed by IA State University.

\*n: The aggregation method is "Weighted Average using all components"

\*c: Using Capabilities Class Dominant Condition Aggregation Method

Soils data provided by USDA and NRCS.