



FARM & RANCH

THE LATE BOB KINGSLEY'S BLUESTEM RANCH!

10,438 square foot custom home sitting atop one of the highest points in Parker county. Home is meticulously laid out to maximize the views and offer breath taking sunrises and sunsets!

5409 Old Dennis Rd. – Weatherford, TX



STEPHEN
REICH GROUP
WILLIAMS TREW REAL ESTATE

WilliamTrew[☆]

A DIVISION OF EBBY HALLIDAY REAL ESTATE, INC.

LISTED BY **STEPHEN REICH GROUP** OF WILLIAMS TREW REAL ESTATE

PROPERTY SUMMARY

DESCRIPTION

An opportunity to own the late Bob Kingsley's beloved Bluestem Ranch! This magnificent ranch has plenty to offer the avid horseman, entertainer, and family that wants to own a masterpiece! Driving through the main gate, you will notice the attention given to every detail. Continue up the paved drive to one of the highest points in Parker county and prepare to be mesmerized. The main home is a sprawling 10,438 sq. ft., with 3 bedrooms, 2 offices, banquet hall, climate controlled wine room, and home gym, that were meticulously laid out to maximize the incredible views. The 3 bedroom guest home, 19 stall horse barn, and covered arena are in close proximity and well designed! Additional acreage is available.

LOCATION

CITY Weatherford

County Parker

Schools Brock ISD

Driving Directions From Old Dennis Rd. and I-20 head south on Old Dennis Rd.
Property will be on left.

OFFER SUMMARY

List Price \$3,900,000

Lot Size 40 acres

Utilities Septic, Private Water, Well

HIGHLIGHTS

• 40 ACRES

• CLIMATE CONTROLLED WINE ROOM

• 10,438 SF / 3 BR / 3 FULL & 3 HALF BATHS

• 19 STALL HORSE BARN / COVERED ARENA

• 6 BARNES

• ADDITIONAL ACREAGE AVAILABLE

LISTING PRESENTED BY:



WilliamsTrew★
A DIVISION OF EBBY HALLIDAY REAL ESTATE, INC.

STEPHEN REICH

817-597-8884

stephen.reich@williamstrew.com

PARKER COUNTY OFFICE

405 S. FM 1187, STE. 400

ALEDO, TX 76089

FARM & RANCH • RESIDENTIAL • COMMERCIAL-DEVELOPMENT • LAND

PROPERTY PHOTOS



The banquet hall of the main home is complete with every possible amenity for the most discerning entertainer. This room was designed for year-round entertaining with panoramic views!



Banquet hall is complete with surround sound, men's and women's restrooms, Wolf gas commercial range, 3 dishwashers, ice machine, kegerator, and double ovens!



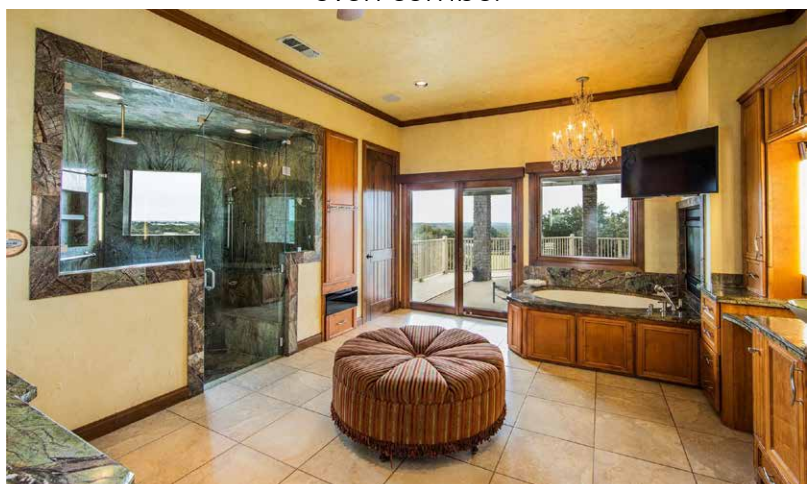
Kitchen has built in Subzero refrigerator and freezer, Gaggenau steam oven, warming drawer and plenty of room to serve a large party.



Every room in the home offers magnificent views, and the kitchen is no exception. Kitchen features a wood burning pizza oven, Thermador Jet Direct double ovens, and a Morice French made gas stove/oven combo.



Large Master suite with a magnificent view.



Luxurious master bath features a steam shower with views, rain forest granite, and Sani-Jet tub.

PROPERTY PHOTOS



Butler's pantry with pass through to the kitchen is complete with a Miele cooktop, Subzero refrigerator/freezer drawers, and a Bosch dishwasher.



Main office is adjacent to the banquet hall and overlooks the entire horse facility.



Home gym is adjacent to the master suite with a Dimension One Exercise Pool.



Subway tile motif laundry room is complete with MTI Laundry sink with jets for hand washing, granite folding table, built-in ironing board, and a Whirlpool personal valet air drying cabinet.



Nicely appointed 3 bedroom 2 bathroom guest house, complete with carport, workout room, and dog runs.



Living room in guest home.

PROPERTY PHOTOS



This is an outdoor chef's dream!



Welcome to the barn!



Unique covered arena is large enough for any discipline, yet features swinging gates to modify the size for cutting.



Main barn features 9 oversized stalls, a nice apartment, vet room, and tack room.



One of multiple paddocks with lush grass.



Property is fenced and cross fenced with superb fencing.