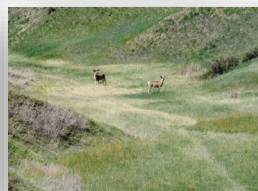
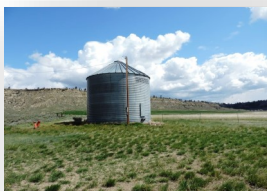


LAND FOR SALE

00 Shepherd Acton Road | Acton | MT | 59002



JAKE KORELL
406.698.4600

Landmark Realtors

**1925 Grand Avenue,
Suite 143
Billings, MT 59102**

Phone: 406.248.3101
Fax: 406.248.1633
E-mail:
Jake@MontanaRanches.com

965 Acres of rolling hills and some rimrocks. Has been in the CRP Program. Power is on the property. All perimeter fenced. Great views, deer and antelope reside on the property from time to time. 12 miles to the property from Zimmerman Trail off Highway 3, Could be farmed again or lots of grazing land for your horses and cows. Live-stock water on the property via a spring. Could be developed into larger tract subdivision. Great getaway property. Three water rights filed on the property.

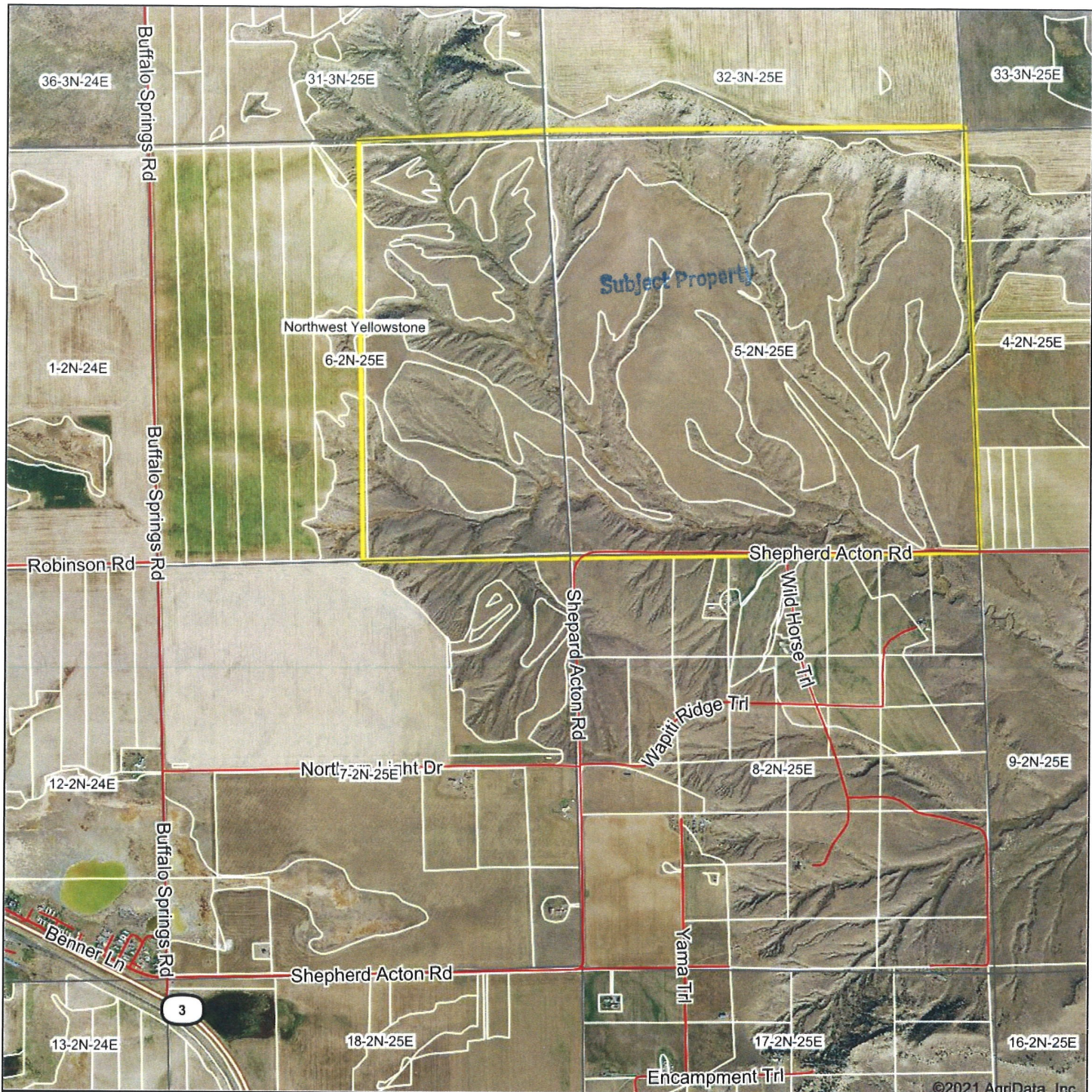
- 965 Deeded Acres
- Topography: hilly, open, pasture, hillside, cleared, rolling
- Water: spring, undeveloped spring
- Road Frontage: 5,280
- Electricity: Available
- Phone: In proximity
- Sewer: None
- Taxes: \$423
- MLS #317957

MontanaRanches.com

\$723,500

Information herein deemed reliable, however, is not guaranteed. The sale offering is made subject to errors, omissions, change of price and prior sale and withdrawal without notice in accordance with the law. This property is offered without respect to race, color, creed, national origin or familial status.

Aerial Map



©2021 AgriData, Inc.

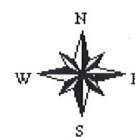


This map is provided as a visual aid only
and accuracy cannot be guaranteed.
LANDMARK REALTORS

Map Center: 45° 56' 37.51, -108° 39' 13.89

0ft 1971ft 3942ft

6-2N-25E
Yellowstone County
Montana



5/5/2021

Maps Provided By
surety
CUSTOMIZED ONLINE MAPPING
© AgriData, Inc. 2021 www.AgridataInc.com

Field borders provided by Farm Service Agency as of 5/21/2008.