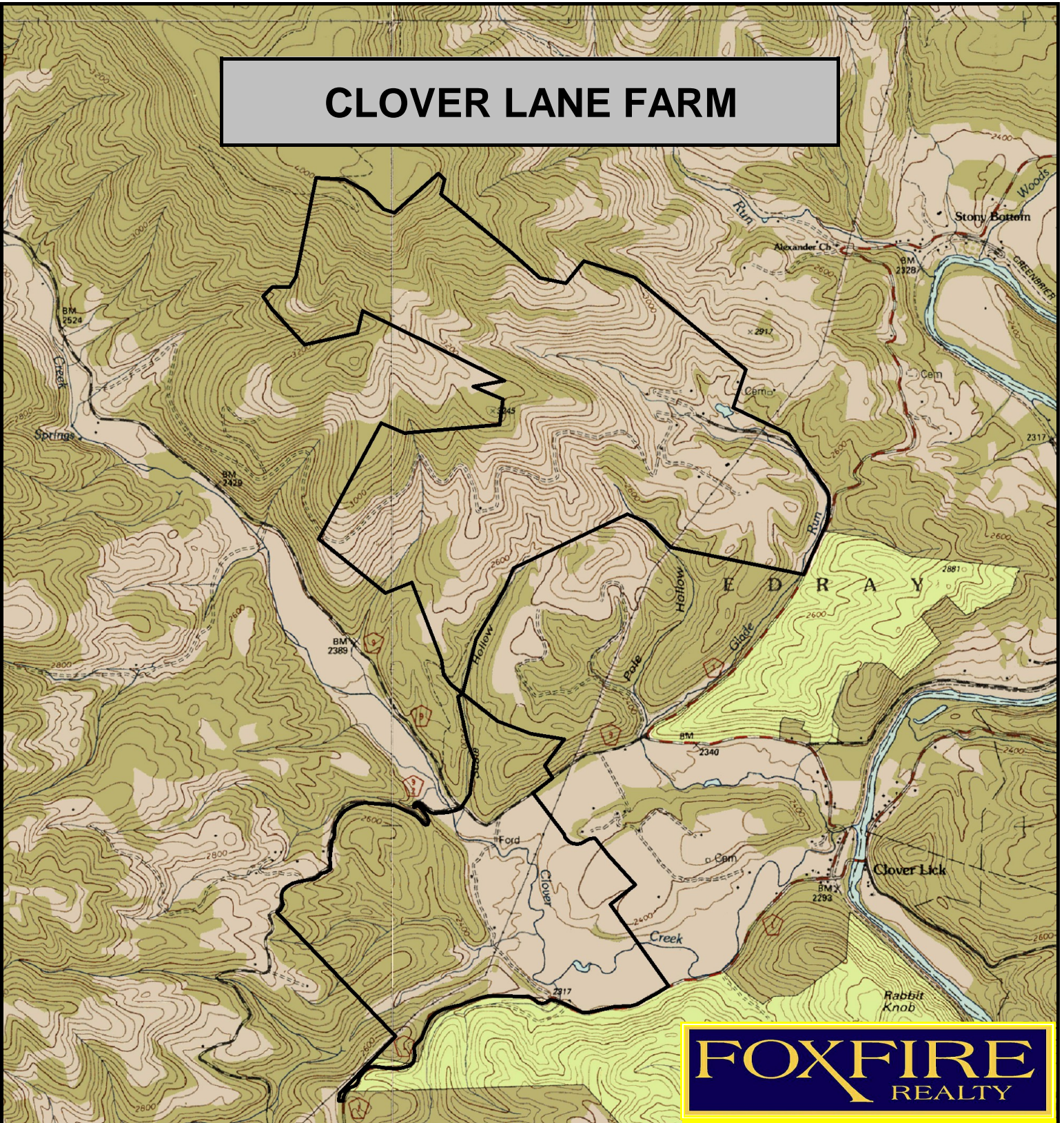


CLOVER LANE FARM



FOXFIRE
REALTY

CLOVER LANE FARM, Pocahontas County, WV
(topographic map, field & forest shading)
Elevation Range: 2290' - 4076' +/-; Google Coordinates:
LAT 38.354131 (N), LON -79.981000 (W)
This map is for general location purposes only. Consult a licensed land
surveyor for actual boundary location and acreage.

RICHARD GRIST, Broker - Auctioneer - Forester
304.646.8837 Richard@Foxfirenation.com
WWW.FOXFIRENATION.COM

FOR TOPO MAP

SCALE 1:30000

1 INCH = 2,500 FT.

