



Priest Road Estate

22371 Priest Rd, Elmendorf, TX 78112

31.133 Acres

\$649,000



1,445 FT. ROAD FRONTAGE

NO RESTRICTIONS

PUBLIC UTILITIES

This rectangular-shaped tract just south of San Antonio boasts 1,445 feet of frontage on Priest Road. It is located in Southside ISD just 3 minutes south of the intersection of Interstate 37 and Loop 1604. Build your own estate out of this large tract, buy and hold as an investment, or subdivide into smaller tracts to sell.

The level tract is 31.133 acres of sandy loam soil covered with native grasses. It is about 90% wooded with mature post oaks, live oaks, and several elms, and 10% open space grassland.

Electricity and a SAWS water line run along the road. There is a water hydrant in front of the property. The perimeter is low-fenced in barbed wire for cattle.

2021 taxes were \$5,840. No agricultural valuation. No mineral rights are included.

Copyright 2021 Grand Land Realty, LLC

The material contained in this document is based in part upon information furnished to Grand Land Realty, LLC. by sources deemed to be reliable. The information is believed to be accurate in all material respects, but no representation or warranty, expressed, or implied, as to list accuracy or completeness is made by any party. Recipients should conduct their own investigation and analysis of the information described herein.

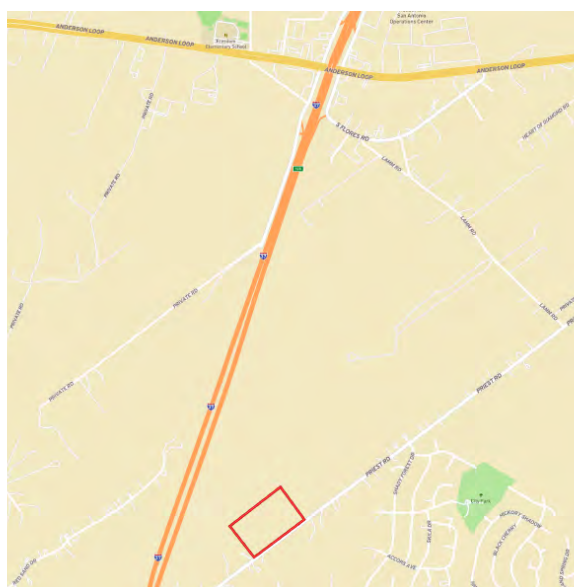


Kendrick Baros

Realtor® - Land Specialist

kendrick@grandlandco.com

(361) 212-2892



LOCATION

Bexar County

0.8 mile to I-37, 3.2 miles to Loop 1604, 20 miles to downtown San Antonio, 27 miles to San Antonio International Airport.

DIRECTIONS

From San Antonio head south on I-37 just past Loop 1604, exit New Mathis Rd, turn left, turn left onto Priest Rd, in 0.8 mile the property is on the left.

Copyright 2021 Grand Land Realty, LLC

The material contained in this document is based in part upon information furnished to Grand Land Realty, LLC. by sources deemed to be reliable. The information is believed to be accurate in all material respects, but no representation or warranty, expressed, or implied, as to list accuracy or completeness is made by any party. Recipients should conduct their own investigation and analysis of the information described herein.




Kendrick Baros

Realtor® - Land Specialist


kendrick@grandlandco.com

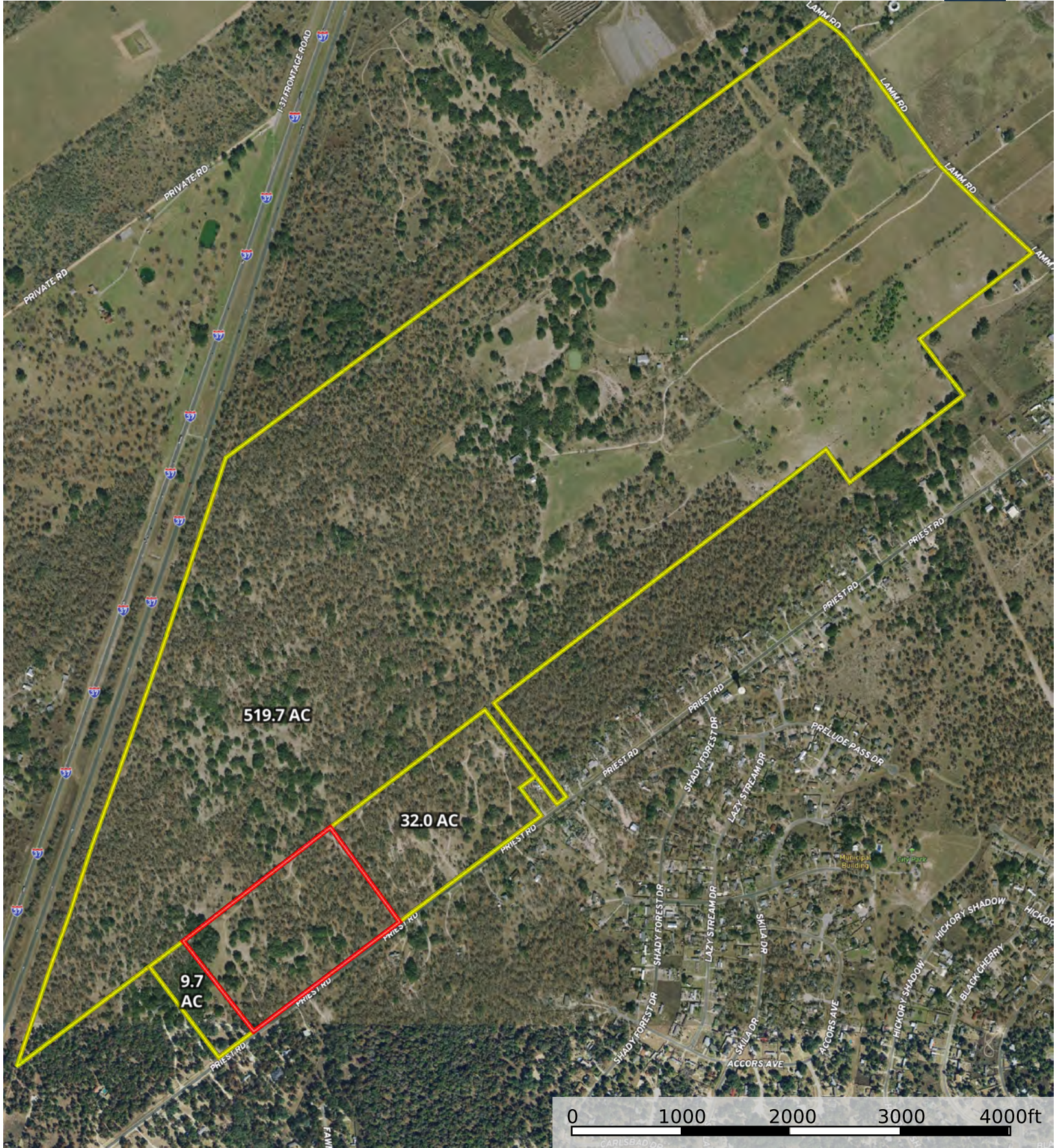
(361) 212-2892



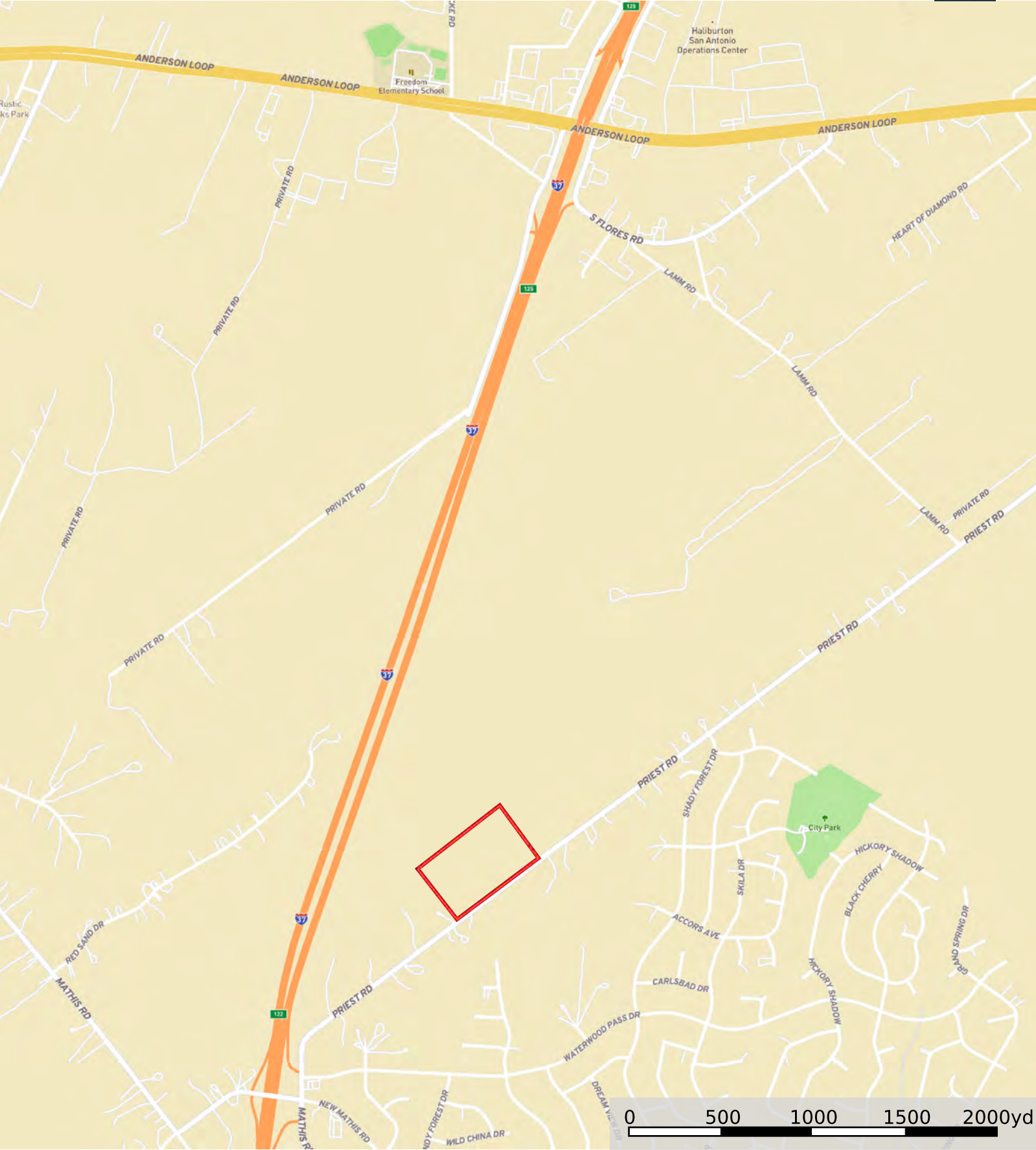
 Boundary




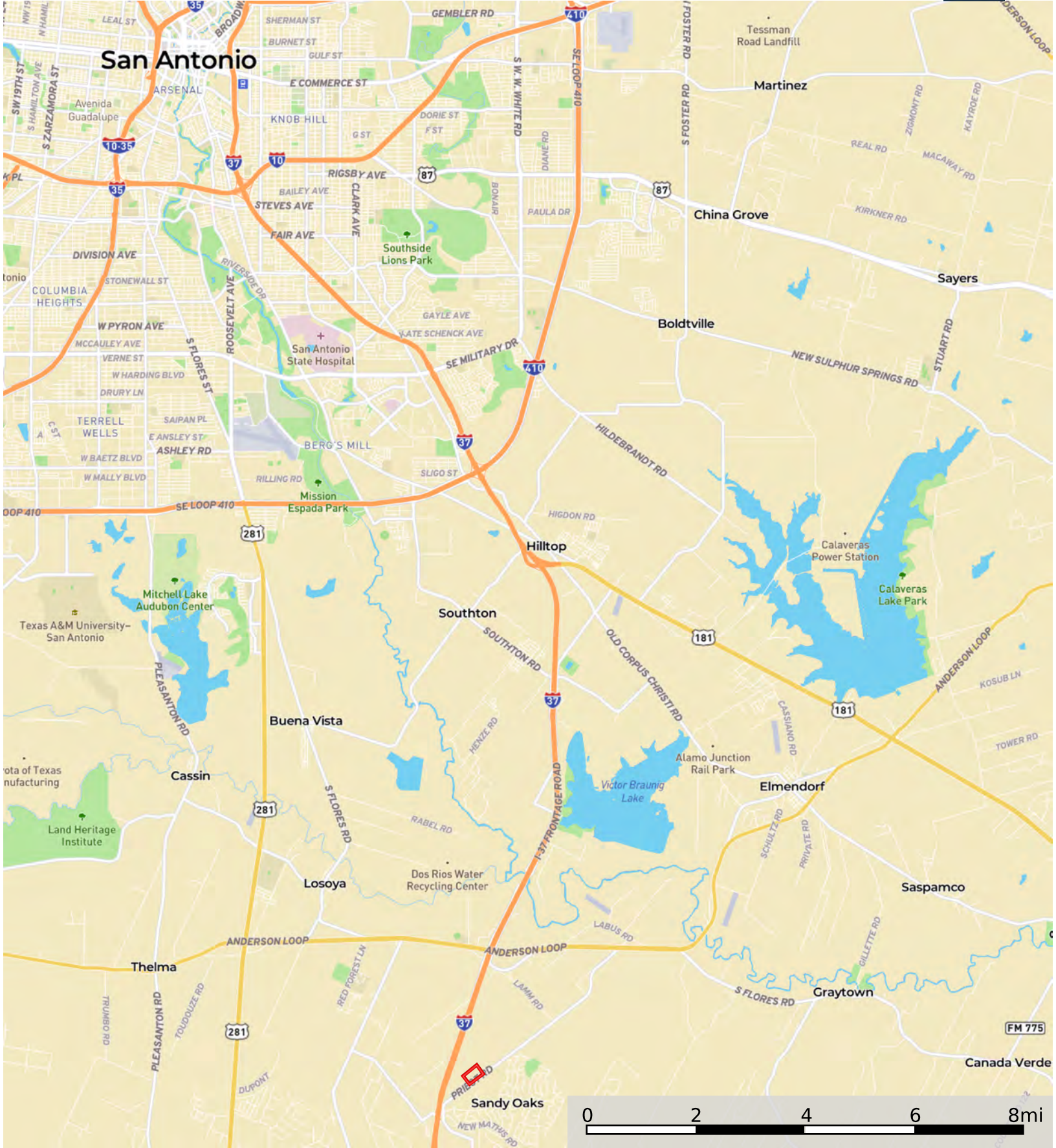
 Boundary




Neighbor Boundary



 Boundary



 Boundary