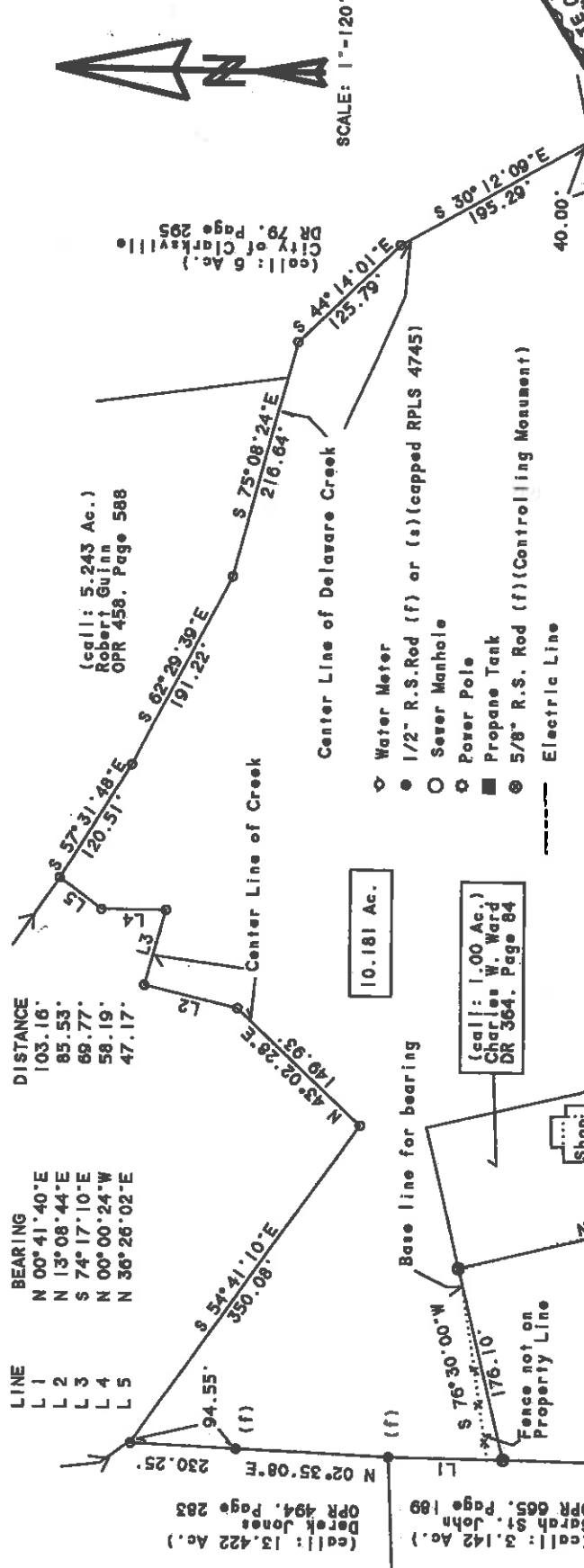
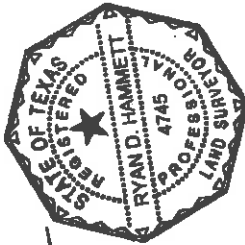


Plat and Field Notes of a 10.181 Ac. tract of land, part of the Henry Stout Survey, Abstract No. 759.
in Red River County, Texas, for Callia Ward.

LINE	BEARING	DISTANCE
L 1	N 00° 41' 40" E	103.16'
L 2	N 13° 08' 44" E	85.53'
L 3	S 74° 17' 10" E	69.77'
L 4	N 00° 00' 24" W	58.19'
L 5	N 36° 26' 02" E	47.17'



SCALE: 1"=120'



October 28, 2018

HAMMETT SURVEYING
PO Box 851
Clarksville, Tx. 75426
903-427-3961
Firm No. 10061000

Ryan D. Hammett
Ryan D. Hammett
Registered Professional Land
Surveyor No. 4745

All that certain tract or parcel of land situated in Red River County, Texas, in the town of Clarksville; and being part of the Henry Stout Survey, Abstract No. 759, and being part of a called 11.67 acre tract of land described in Deed from Darrell S. Ward to Charles Lee Ward and wife, Calla Ann Ward; dated October 26, 1995, and recorded in Volume 441, Pages 163-164, and all of a called 1.00 acre tract of land described in Deed from Darrell Ward and wife, Dorothy Ward to Charles W. Ward and wife, Calla Ward, dated August 14, 1985, and recorded in Volume 364, Pages 84-85, all in the Deed Records of Red River County, Texas; and being more particularly described as follows, to-wit:

Beginning at a 1/2" R.S.Rod (s) at the Southwest corner of said called 1.00 Ac. tract, and in the South line of said called 11.67 Ac. tract, also being the Southeast corner of a called 1.473 Ac. tract described in Deed to Kirk Moore (OPR 676, Page 232), same being in the North line of College Street;

Thence N 13° 30' 06" W, a distance of 337.67 feet to a 5/8" R.S.Rod (f) at the Northwest corner of said called 1.00 Ac. tract, and at the Northeast corner of said called 1.473 Ac. tract;

Thence S 76° 30' 00" W, a distance of 176.10 feet to a 5/8" R.S.Rod (f) at the Northwest corner of said called 1.473 Ac. tract, and in the West line of said called 11.67 Ac. tract;

Thence along the West line of said called 11.67 Ac. tract, N 0° 41' 40" E, a distance of 103.16 feet (1/2" R.S.Rod (f)), and N 2° 35' 08" E, a distance of 230.25 feet to the Northwest corner of said called 11.67 Ac. tract in the center of a Creek, a 1/2" R.S.Rod (f) bears S 02 deg. 35' 08" W, 94.55 feet for a reference;

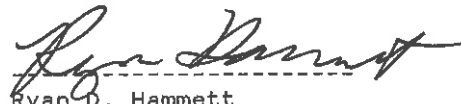
Thence along the North and East line of said called 11.67 Ac. tract, and along the meanders of the center line of said Creek the following calls: S 54° 41' 10" E, a distance of 350.08 feet, N 43° 02' 28" E, a distance of 149.93 feet, N 13° 08' 44" E, a distance of 85.53 feet, S 74° 17' 10" E, a distance of 69.77 feet, N 0° 00' 24" W, a distance of 58.19 feet, N 36° 26' 02" E, a distance of 47.17 feet, S 57° 31' 48" E, a distance of 120.51 feet, S 62° 29' 39" E, a distance of 191.22 feet, S 75° 08' 24" E, a distance of 216.64 feet, S 44° 14' 01" E, a distance of 125.79 feet, and S 30° 12' 09" E, a distance of 195.29 feet to the Southeast corner of said called 11.67 Ac. tract, and in the North line of College Street, a 1/2" R.S.Rod (s) bears S 76 deg. 39' 49" W, 40.00 feet for a reference;

Thence S 76° 39' 49" W, along the South line of said called 11.67 Ac. tract, and the North line of College Street, a distance of 956.64 feet to the place of beginning and containing 10.181 acres of land.

The bearings recited herein are based on the Deed Call of the North line of said called 1.473 Ac. tract with controlling monuments at the ends of said line. All 1/2" R.S.Rods (s) were capped RPLS 4745. This description was prepared from a survey made on the ground under my supervision and completed on October 28, 2018.



October 28, 2018


Ryan D. Hammett
Registered Professional Land
Surveyor No. 4745