

Merrick County Irrigated Farmland



- ⇒ Highly productive, level farm.
- ⇒ Located right off of Highway 30.
- ⇒ Great access to elevators and ethanol plants in the area.
- ⇒ This farm has 254.67 certified irrigated acres.



Total Property Acres: 285.68+/-

Acres of Irrigation: 254.67+/- Acres of Dryland: 18.72+/-

Acres of Grassland: 8.70+/- Other Acres: 3.59 +/-

Property Taxes - \$16,579.96

Legal Description - Pt. S 1/2 NE 1/4 & SE 1/4 Section 8, Township 13 N,
Range 6W; E 1/2 SW 1/4 Section 8, Township 13N, Range 6W

Price - \$2,399,712.00

Directions: Take Highway 30 west out of Central City to 15th Road. Turn north and cross the railroad tracks. The property is located to the northwest, right after cross railroad tracks.

Kraig Urkoski | Farm & Ranch Specialist | Clarks, NE
308.548.8431 | Kraig.Urkoski@AgWestLand.com

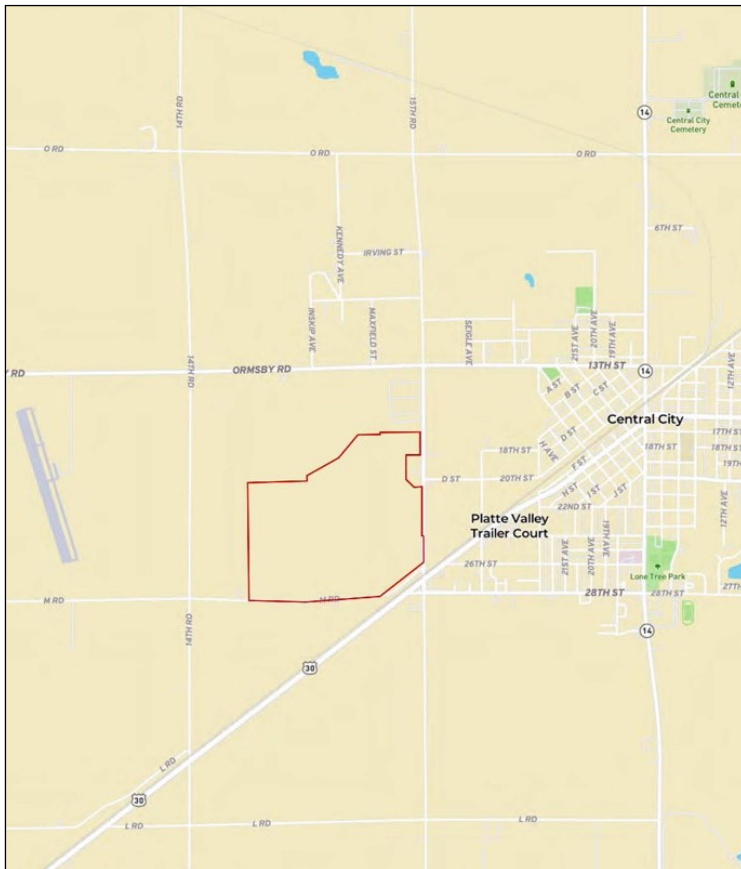
AgWest Land Brokers, LLC | 415 W. 4th Ave. PO Box 1098
Holdrege, NE 68949 | 866-995-8067

AgWestLand.com





Additional items:
 2 - 7,350 bushel grain bins
 irrigation wells
 (no electric motors or power units)



Your Local Land Expert

Public Auctions · Sealed Bid Auctions
 Online Auctions · Private Treaty Listings

The information contained herein is as obtained by AgWest Land Brokers, LLC—Holdrege, NE from the owner and other sources. Even though this information is considered reliable, neither broker nor owner make any guarantee, warranty or representation as to the correctness of any data or descriptions. The accuracy of such statements should be determined through independent investigation made by the prospective purchaser. This offer for sale is subject to prior sale, errors and omissions, change of price, terms or other conditions or withdrawal from sale in whole or in part, by seller without notice and at the sole discretion of seller. Readers are urged to form their own independent conclusions and evaluations in consultation with legal counsel, accountants, and/or investment advisors concerning any and all material contained herein.