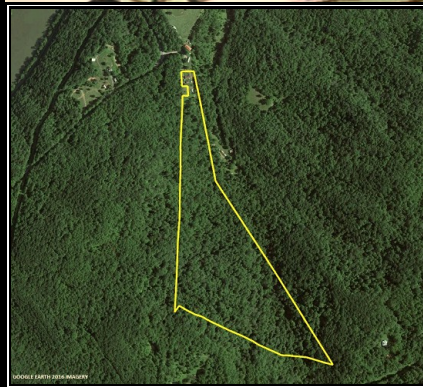
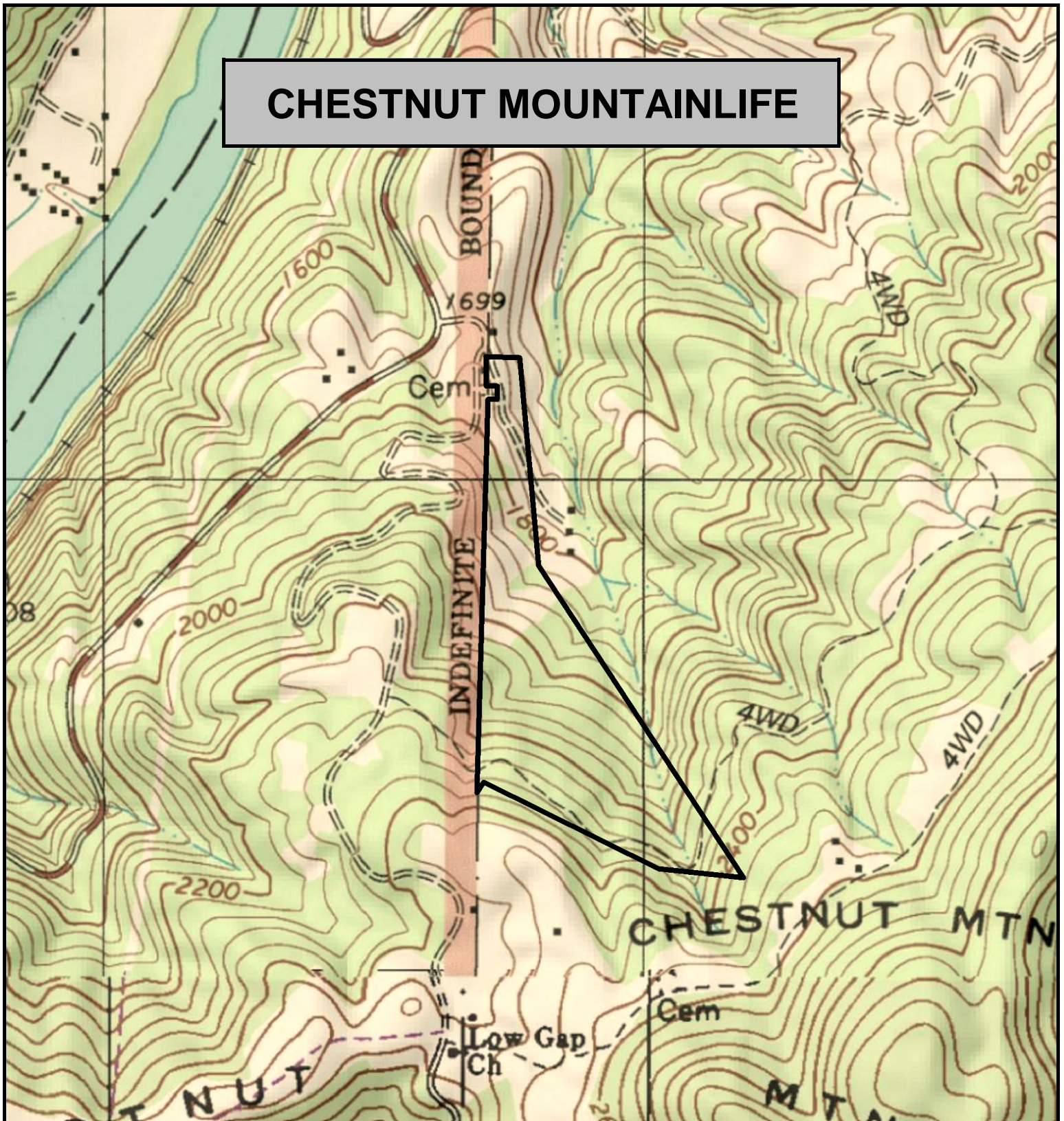


# CHESTNUT MOUNTAINLIFE



CHESTNUT MOUNTAINLIFE, Summers County, WV (topographic map)  
Elevation Range: 1705' - 2412' +/-; Google Coordinates: LAT 37.760098 (N), LON -80.889761 (W)  
This map is for general location purposes only. Consult a licensed land surveyor for actual boundary location and acreage.

FOR TOPO MAP

SCALE 1:9600

1 INCH = 800 FT.

