

VIRGINIA, IN THE OFFICE OF THE CLERK OF THE CIRCUIT COURT OF
CARROLL COUNTY,
AT THIS MAP RECEIVED IN OFFICE AND ADMITTED TO RECORD.

Plat of Survey, Subdivision and Boundary Line Adjustment for
Primmer, Incorporated

May 25, 2021

Scale: 1" = 150'



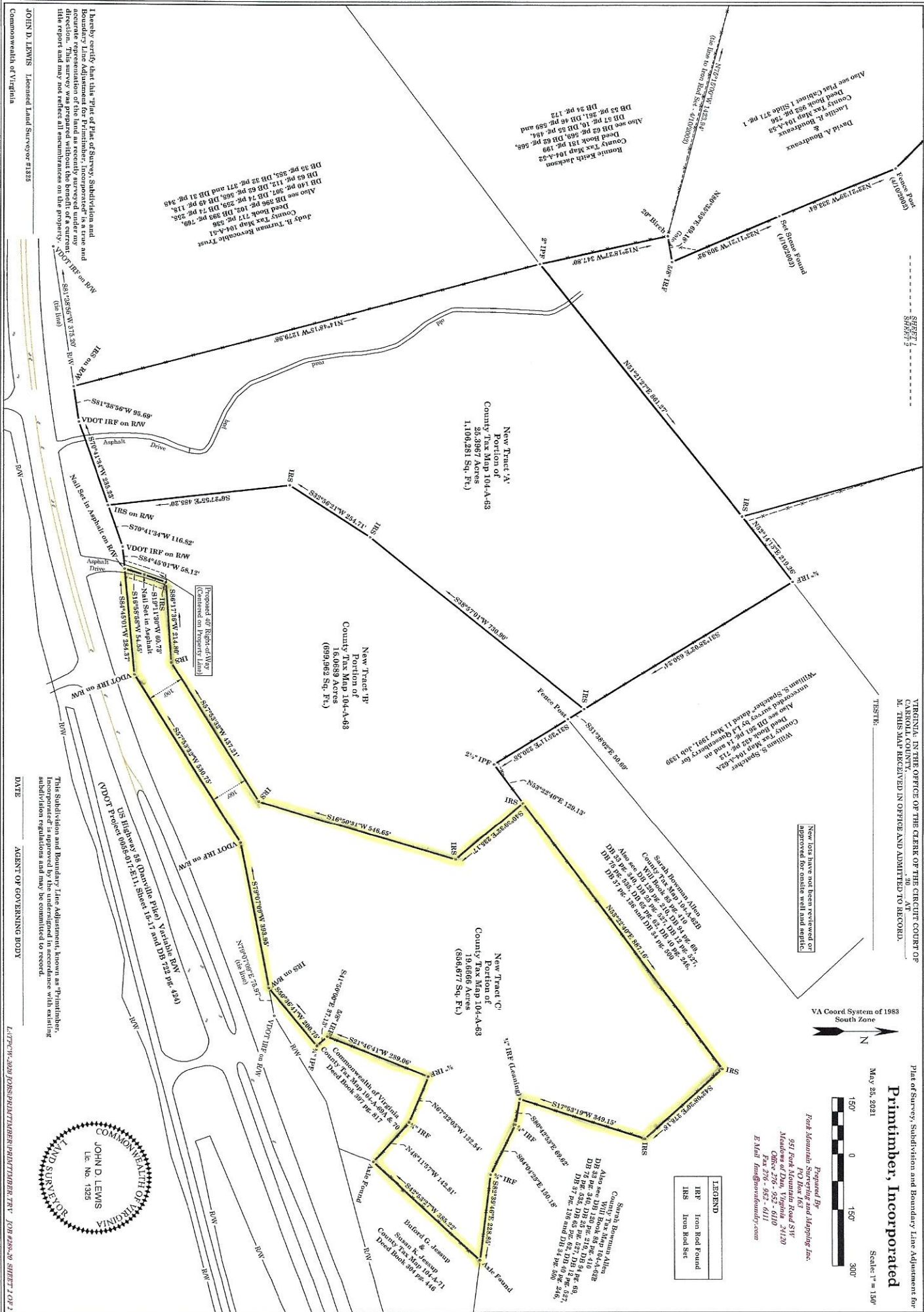
Prepared by:
Patt Mountain Surveying and Mapping, Inc.
PO Box 161
951 Park Mountain Road SW
Meadow of Stars, Virginia 24120
Office 202-252-0100
Fax 202-252-0101
E-Mail: Info@pattmountain.com



VA Coord System of 1983
South Zone

E-Mail: Info@pattmountain.com

LEGEND
IRF Iron Road Found
IRS Iron Road Set



JOHN D. LEWIS Licensed Land Surveyor #1325
Commonwealth of Virginia

DATE AGENT OF GOVERNING BODY

L:\177C-W-300\PRIMER\ATTN:PRIMER\PRIMER.TRY JOHN D. LEWIS SHEET 1 OF 2

This Subdivision and Boundary Line Adjustment, known as "Primmer, Incorporated", is approved by the undersigned in accordance with existing subdivision regulations and may be committed to record.

I hereby certify that this Plat of Survey, Subdivision and Boundary Line Adjustment, known as "Primmer, Incorporated", is a true and accurate representation of the land as recently surveyed under my direction. This survey was prepared without the benefit of a current title report and may not reflect all encumbrances on the property.

