

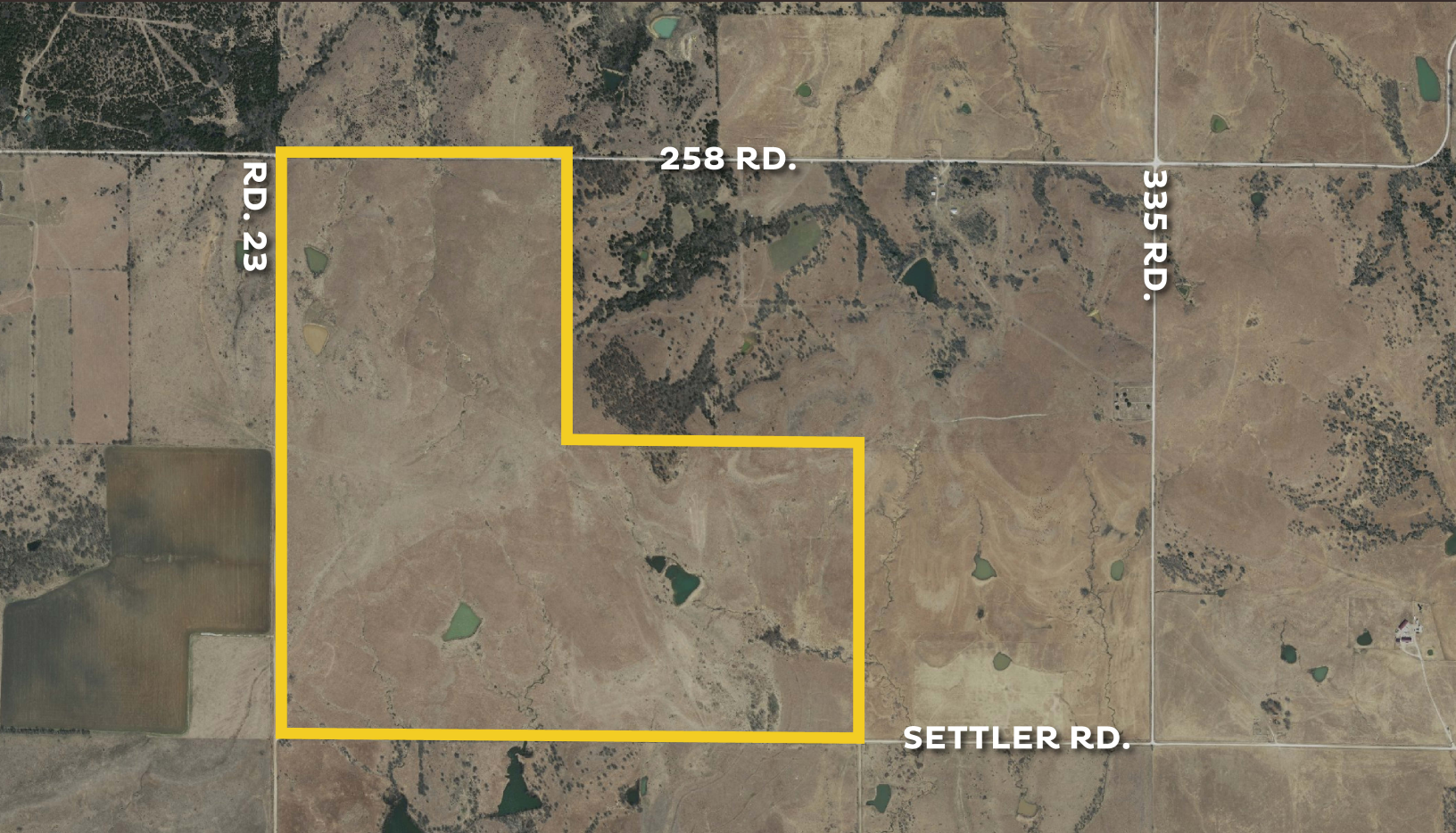


RUPP|STEVEN

Flint Hills Kansas Cattle Ranch

Location: NE/c of Rd 23 and Settler Rd, Fall River, KS 67047

**PRISTINE FLINT HILL, KS PASTURE LAND – QUALITY FENCING
SCENIC VIEWS – AMPLE WATER – GREAT LOCATION – EASY ACCESS**



Price: \$1,059,525.00

(\$2,250.00 per acre)

Legal: The West Half and the Southeast Quarter, less right-of-way, of Section 29, Township 28 South, Range 12 East of the 6th P.M., Elk County, Kansas

Total Acres: 470.9 +/- Acres

2020 Taxes: \$1,586.78

Mineral Rights: Seller's interest transfers with the real estate.



ReeceNichols
SOUTH CENTRAL KANSAS
An Independently Owned and Operated Member of the Reece & Nichols Alliance, Inc.

JOHN RUPP
316.250.5198

johnrupp@reecenichols.com

JAKE STEVEN
316.708.5960

jake@reecenichols.com

TERRY RUPP
316.259.2106

terry@reecenichols.com

Flint Hills Kansas Cattle Ranch

