

Texas
Hardeman

U.S. Department of Agriculture
Farm Service Agency

FARM: 2706
Prepared: 4/9/19 3:10 PM
Crop Year: 2019

Report ID: FSA-156EZ

Abbreviated 156 Farm Record

Page: 1 of 1

DISCLAIMER: This is data extracted from the web farm database. Because of potential messaging failures in MIDAS, this data is not guaranteed to be an accurate and complete representation of data contained in the MIDAS system, which is the system of record for Farm Records.

Operator Name	Farm Identifier	Recon Number
BAKER, JOHNNY W		

Farms Associated with Operator:
None

CRP Contract Number(s): None

Farmland	Cropland	DCP Cropland	WBP	WRP/EWP	CRP Cropland	GRP	Farm Status	Number of Tracts
236.0	189.93	189.93	0.0	0.0	0.0	0.0	Active	1
State Conservation	Other Conservation	Effective DCP Cropland	Double Cropped	MPL/FWP				
0.0	0.0	189.93	0.0	0.0				

ARC-IC	ARC-CO	ARC/PLC	PLC	PLC-Default
NONE	NONE		WHEAT, OATS , FLAX CORN , SORGH, PNUTS SNFLR, SFLWR, SOYBN BARLY, RAPE , MUSTD SESME, CANOL, CRAMB RICE-LGR, RICE-MGR, SML CHIKP LRG CHIKP, PEAS , LENTI	NONE

Crop	Base Acreage	CTAP Tran Yield	PLC Yield	CCC-505 CRP Reduction
WHEAT	187.1		17	0.0
Total Base Acres:	187.1			

Tract Number: 173 Description: 83-B/4 90-C/4 96-C/5

BIA Range Unit Number:

HEL Status: NHEL: no agricultural commodity planted on undetermined fields

Wetland Status: Tract does not contain a wetland

WL Violations: None

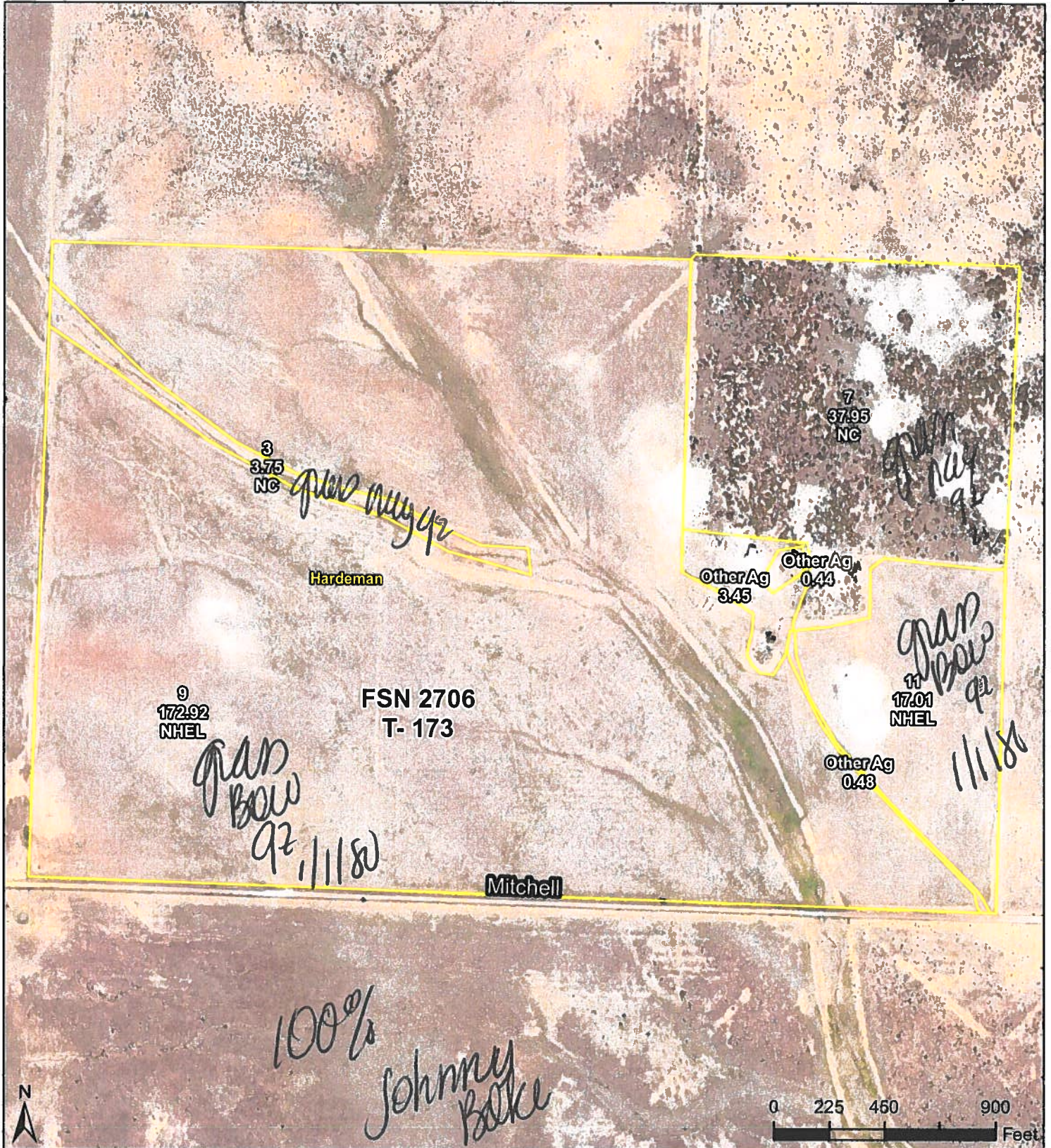
Farmland	Cropland	DCP Cropland	WBP	WRP/EWP	CRP Cropland	GRP
236.0	189.93	189.93	0.0	0.0	0.0	0.0
State Conservation	Other Conservation	Effective DCP Cropland	Double Cropped	MPL/FWP		
0.0	0.0	189.93	0.0	0.0		

Crop	Base Acreage	CTAP Tran Yield	PLC Yield	CCC-505 CRP Reduction
WHEAT	187.1		17	0.0
Total Base Acres:	187.1			

Owners: BAKER, JOHNNY W

BAKER, JILL E

Other Producers: None



Farm: 2706
Tract: 173

Wetland Determination Identifiers

- Restricted Use
- ▼ Limited Restrictions
- Exempt from Conservation
- Compliance Provisions

2021 Program Year

Map Created July 08, 2021

Image Acquisition Year - 2018